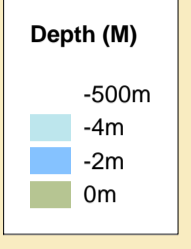




DEPTHS
 Depths are in metres and are reduced to chart datum being 4.93m below Ordnance Datum (Newlyn), which is approximately the level of Lowest Astronomical Tide.

HEIGHTS
 Heights are in metres. Underlined figures show heights above Chart Datum.

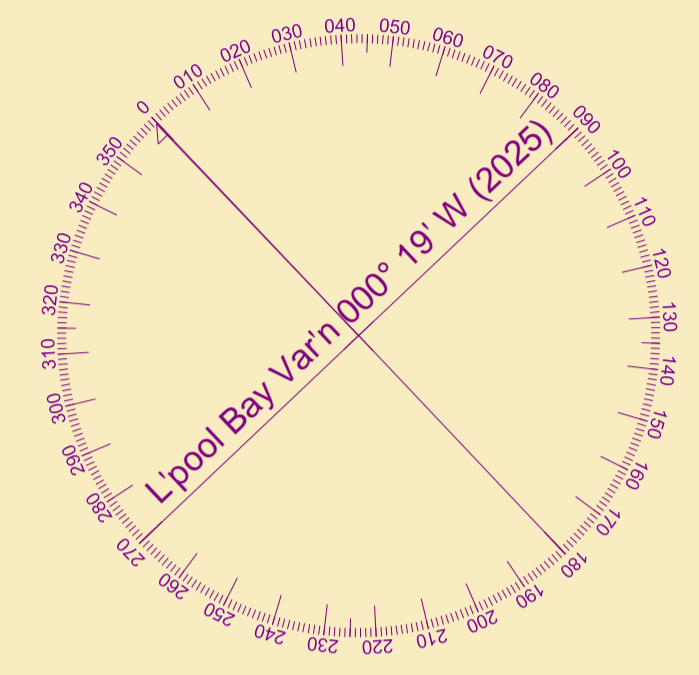


TOPOGRAPHY
 The shore features on this chart are based largely on Ordnance Survey digital mapping data with permission of HMSO. © Crown Copyright 2025. Peel Licence Number 100018033.

FLATS & SANDBANKS
CAUTION OWING TO FREQUENT CHANGES IN DEPTHS AND POSITIONS OF FLATS AND SANDBANKS THIS CHART SHOULD BE USED WITH CAUTION.

POSITIONS
 Positions are referred to OSGB36 National Grid Datum.

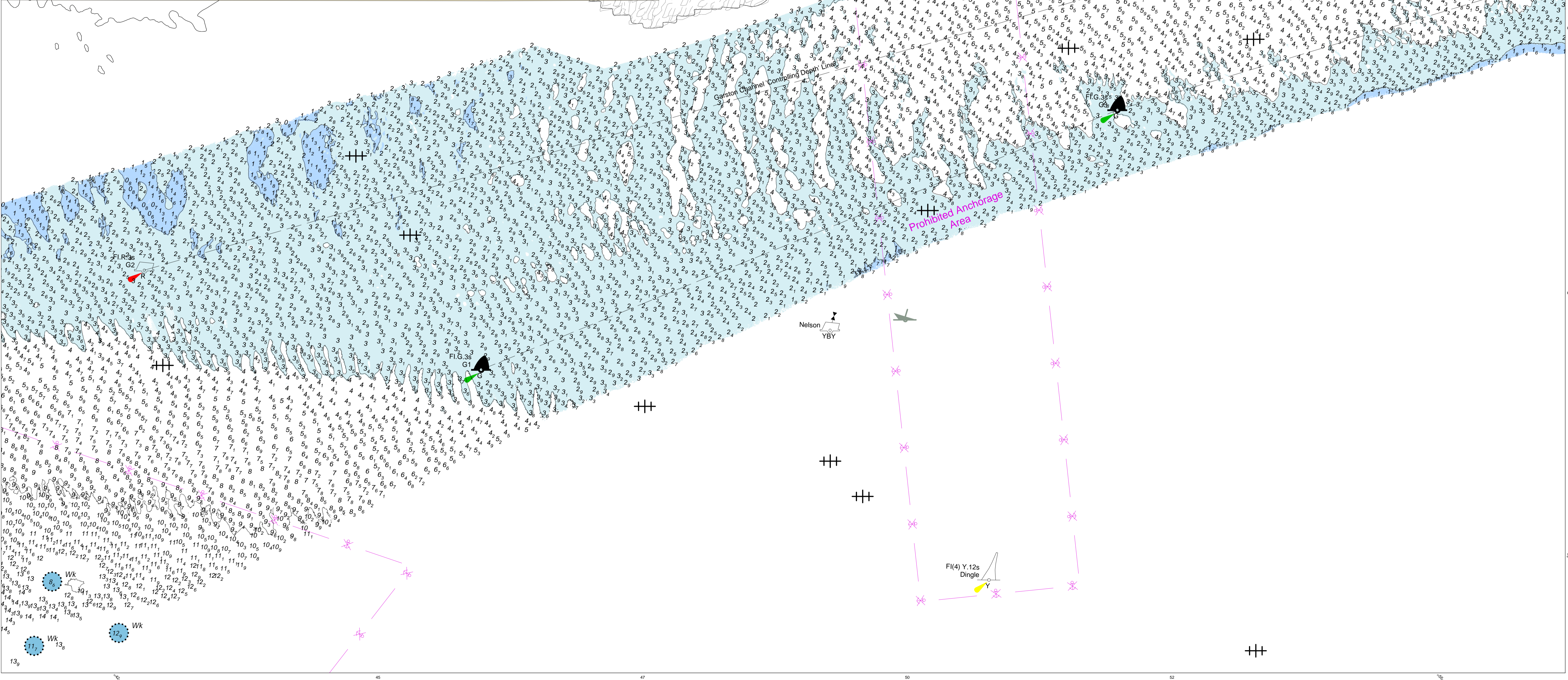
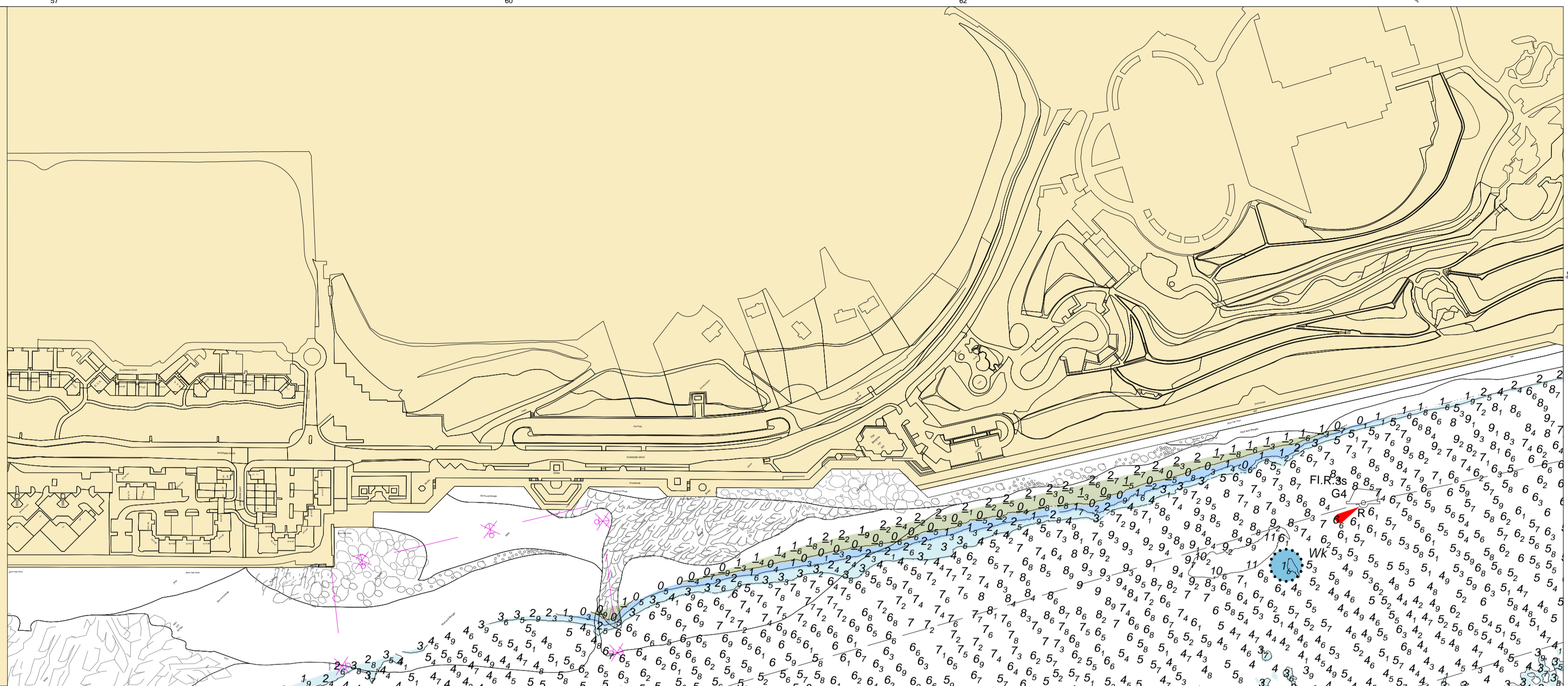
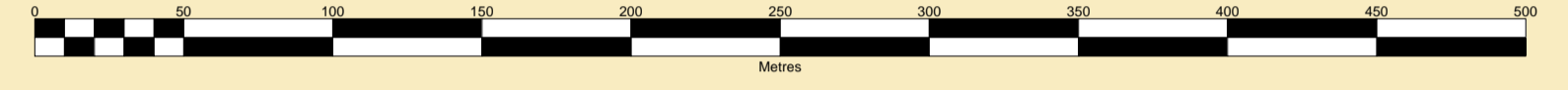
UKHO & NTMS
 When using this chart please refer to UKHO Admiralty Publications and also local Notice to Mariners and Navigational Warnings.



MERSEY DOCKS AND HARBOUR COMPANY LTD
 Gary Doyle
 Group Harbour Master
 River Mersey
 LPR002_6_2025_001
 Garston Bar

Vessel:	Royal Charter
Surveyed by:	RL
Processed by:	RL
Checked by:	NM
Surveyed:	11th February 2025
Issued:	14th February 2025

SCALE 1:2500 at A1



Nelson
 YBY

Fl(4) Y.12s
 Dingle

++