



MERSEY DOCKS AND HARBOUR COMPANY LTD

Gary Doyle
Group Harbour Master

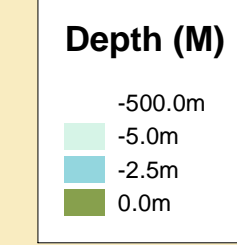
River Mersey

**LPR002_4_2022_005_C
Cammell Laird's Wall**

Surveyed by: VO
Processed by: VO
Checked by: NM
Surveyed: 3rd October 2022
Issued: 5th October 2022

DEPTHS
Depths are in metres and are reduced to chart datum being 4.93m below Ordnance Datum (Newlyn), which is approximately the level of Lowest Astronomical Tide.

HEIGHTS
Heights are in metres. Underlined> figures show heights above Chart Datum.

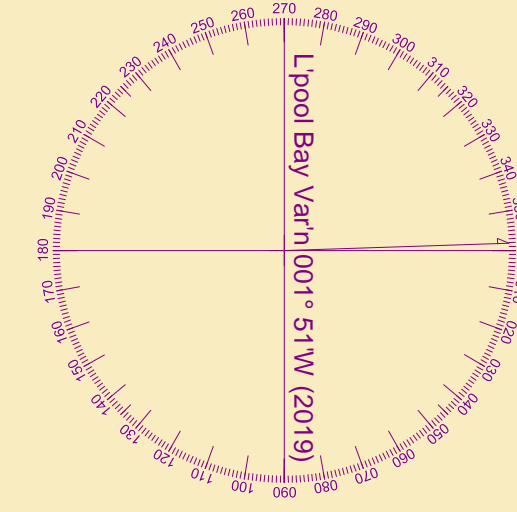


POSITIONS
Positions are referred to OSGB36 National Grid Datum.

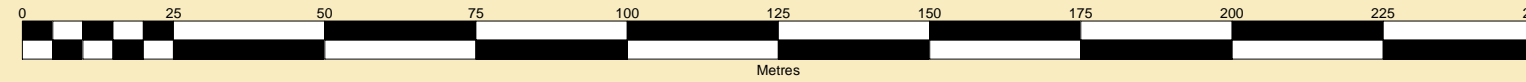
UKHO & NTMS
When using this chart please refer to UKHO Admiralty Publications and also local Notice to Mariners and Navigational Warnings.

TOPOGRAPHY
The shore features on this chart are based largely on Ordnance Survey digital mapping data with permission of HMSO. © Crown Copyright 2022. Peel Licence Number 100018033.

FLATS & SANDBANKS
CAUTION OWING TO FREQUENT CHANGES IN DEPTHS AND POSITIONS OF FLATS AND SANDBANKS THIS CHART SHOULD BE USED WITH CAUTION.



SCALE 1:1250 at A1



Pontoon and Moorings in this area
(see MD&HC Ltd Notice to Mariners No 24 - 2012.)

Still level 1.55m below CD(75)

The Princess Dock

No 7 Still level 0.56m below CD(75)

No 8 Still level 0.16m above CD(75)

No 6 Still level 1.02m below CD(75)

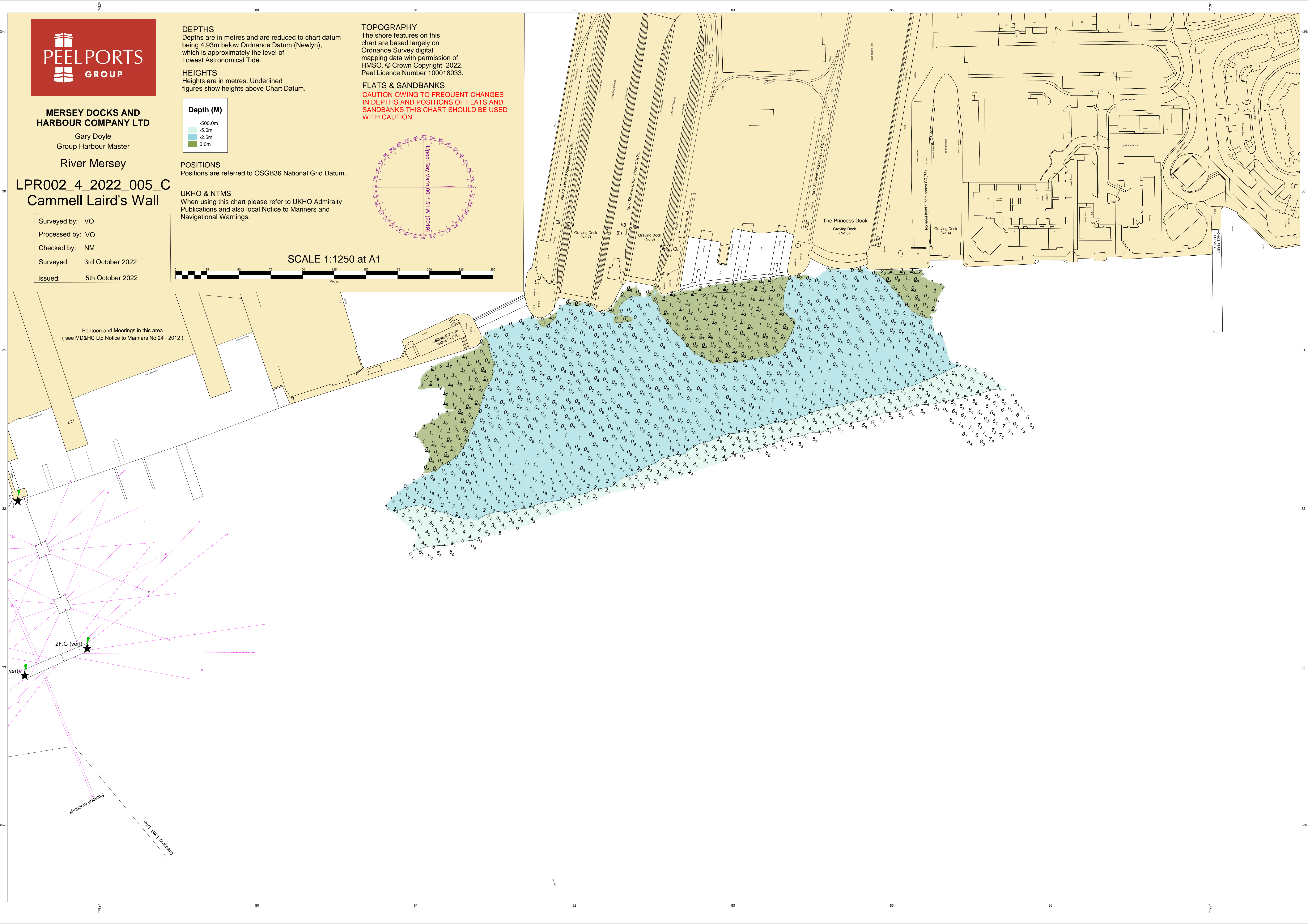
No 4 Still level 1.71m above CD(75)

Graving Dock (No 7)

Graving Dock (No 8)

Graving Dock (No 5)

Graving Dock (No 4)



2F.G (vert)

(vert)

Pontoon Moorings
Dredging Lane