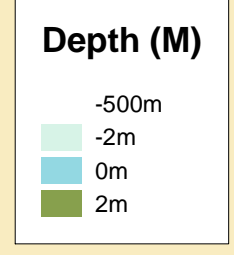


MERSEY DOCKS AND HARBOUR COMPANY LTD
 Captain Susan Cloggie-Holden MNM
 Group Harbour Master

Liverpool Docks
 LPD008_2_2026_002
 Birkenhead Docks
 West Float Section

DEPTHS
 Depths are in metres and are reduced to chart datum being 4.93m below Ordnance Datum (Newlyn), which is approximately the level of Lowest Astronomical Tide.

HEIGHTS
 Heights are in metres. Underlined figures show heights above Chart Datum.

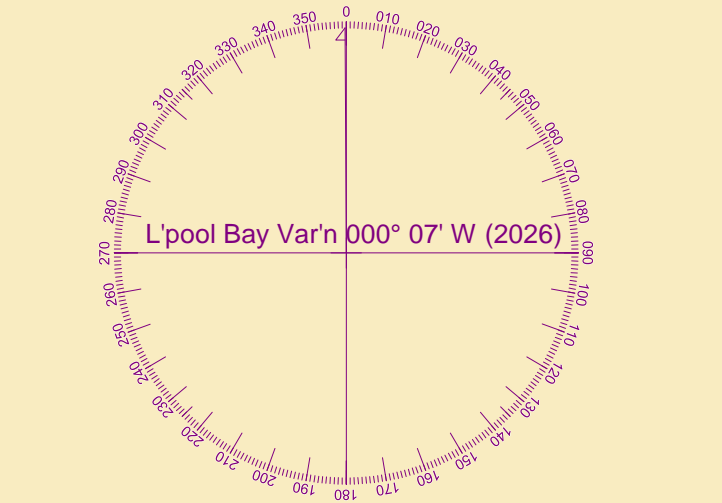


POSITIONS
 Positions are referred to OSG836 National Grid Datum.

UKHO & NTMS
 When using this chart please refer to UKHO Admiralty Publications and also local Notice to Mariners and Navigational Warnings.

TOPOGRAPHY
 The shore features on this chart are based largely on Ordnance Survey digital mapping data with permission of HMSO. © Crown Copyright 2026. Peel Licence Number 100018033.

FLATS & SANDBANKS
 CAUTION OWING TO FREQUENT CHANGES IN DEPTHS AND POSITIONS OF FLATS AND SANDBANKS THIS CHART SHOULD BE USED WITH CAUTION.



Surveyed by:	NMKH
Processed by:	NM
Checked by:	NM
Surveyed:	11th June 2026
Issued:	16th June 2026
Graving Dock (No.3) Surveyed:	20th June 2023
Vessel:	Fitzroy

SCALE 1:1250 at A0

