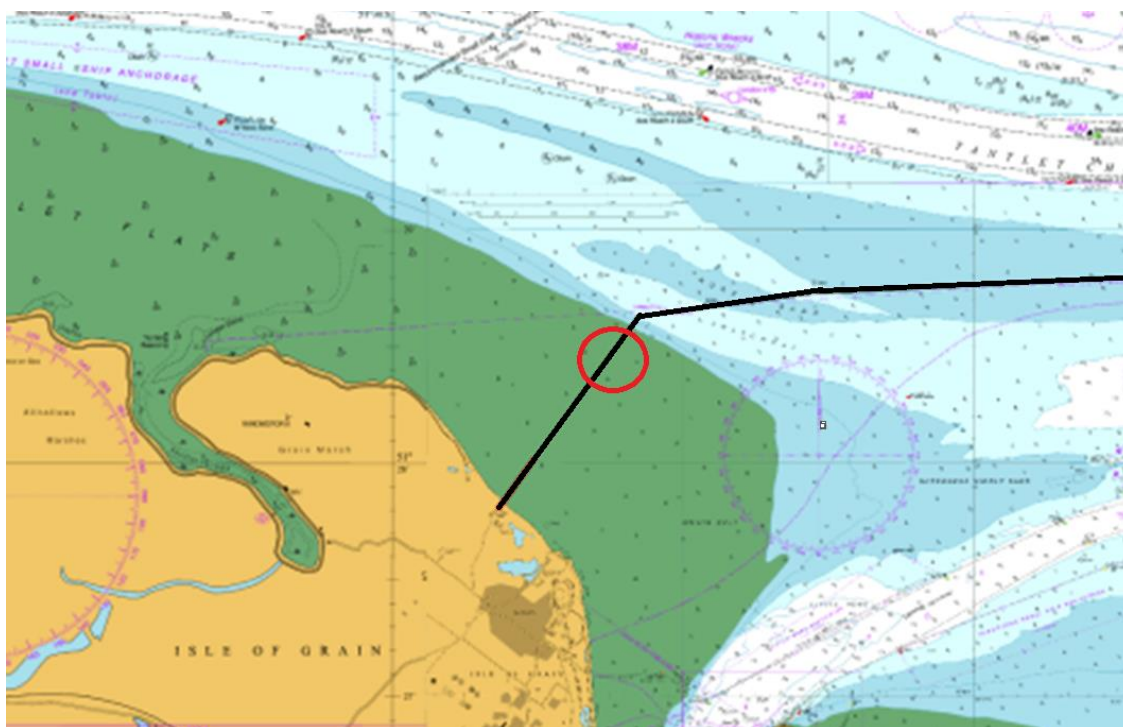


NtoM 13 - 2025

Approaches to Sheerness

Grain Spit – Archaeological Excavation Work

NOTICE IS HEREBY GIVEN that excavation work to enable an archaeological assessment of timber material that was identified during the pUXO works of the Neuconnect Interconnector project will be commencing shortly. The initial reconnaissance exercise is planned to take place over a 3-day period during suitable receding tides and during daylight operating hours, the work is expected to commence on or around 27th April 2025. The dig will take place approximately 1.65km from the shore in the approximate location shown below. **All vessels transiting the Swatchway should be aware of the activity which will involve amphibious excavators and a hovercraft during the period stated. Admiralty Chart : 3683 refers**



Further information may be obtained from Medway VTS on VHF Channel 74, call sign “Medway VTS” or telephone 0151 949 6148 or 0151 949 6650 (**Recorded Lines**)

**Marine Operations Department
Peel Ports London Medway**

Notice Issued:
Notice Expiry:

23rd April 2025
2nd May 2025