



London Medway

A gateway to global trade

[peelports.com](https://www.peelports.com)

Peel Ports Group
More Than Ports



Contents

A strategic port for the UK	4
Location	7
RoRo	8
Paper Handling	10
Timber and Steel	12
Project Cargo	14
Who we work with	16
PortPlus+	18
Skilled teams	20
Safe and secure operations	21
Our net zero journey	22
Partner with London Medway ports	23

Peel Ports Group

We are the UK's second largest port operator, safely handling 70 million tonnes of cargo each year, around 14% of the total market share.

2,000 employees across the UK and Ireland.

7 ports & **24** terminals.

14% UK market share.

70 million tonnes of cargo handled each year.

£1.5bn + invested in the last ten years.

7 statutory harbour authorities.

But we're much more than ports, as a major employer in the regions where we operate, we're creating trade opportunities, supporting jobs and developing skills for the future, all while reducing the impact of our operations on the environment.



As the UK's second largest port operator, we know a thing or two about supply chains and the safe, efficient transporting of goods.

But we do much more than that.

We're a leading enabler of port-centric solutions, which means our customers benefit from a range of in-port and on-demand services.

Peel Ports Group organises its terminals by clusters in different locations, these are:

- Clydeport
- London Medway
- Dublin
- Runcorn
- Liverpool
- Humber Bulks Terminal
- Manchester Ship Canal
- Ellesmere Port
- Heysham
- Birkenhead
- Great Yarmouth



Our Locations



A strategic port for the UK's trade and logistics network.

London Medway is one of the UK's most versatile and dynamic ports, providing unparalleled connectivity to both domestic and international markets. Situated just 35 miles from the M25, linking to the wider UK motorway network, our strategic location on the River Thames offers direct access to key global shipping lanes, some of Europe's busiest trade routes, and a comprehensive network of road and rail connections. This positions London Medway as an essential logistics hub for a wide range of industries, from container shipping and RoRo (roll-on/roll-off) operations to bulk and agribulk handling.

As part of Peel Ports Group, we are committed to delivering exceptional port services that meet the ever-evolving needs of modern businesses. Our expansive facilities cover hundreds of acres of quayside and warehousing space, designed to accommodate diverse cargo types, including automotive, RoRo, dry bulks, forest products, steel, and specialised project cargo. Whether it's facilitating the smooth import and export of goods, or offering tailored storage solutions for industrial products, we excel at managing high volumes efficiently and cost-effectively.

Key facts and figures:

450 acres

with an additional 200 acres of development land.

10 meters

draft depth.

1,000 meters

of berth length.

15 million

tonnes cargo through annually.

Commodities we handle:



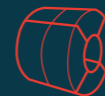
Paper



RoRo + LoLo



Renewables



Steel



Project Cargo



Timber



Aggregates/Bulks



Container



Energy Products





Location and connectivity

Strategically positioned on the River Medway, just **35 miles from the M25**, London Medway is one of the most accessible and well-connected ports in the South East. Its prime location offers unrivalled proximity to Europe's busiest shipping lanes, major UK distribution hubs, and key transport networks, enabling seamless logistics solutions for a wide range of industries.

Access to major cities and economic zones:

With connections to the M2, M20, and M25 motorways, as well as direct links to cities such as Birmingham, Manchester, and the Midlands, London Medway provides easy access to the UK's largest economic zones, including its thriving logistics, retail, automotive, and construction industries.



Lower Thames Crossing



Close to major road junctions (M2)



Positioned on The Thames Estuary



RoRo and Automotive

London Medway specialises in the efficient handling of a wide range of RoRo and automotive cargo, including cars, vans, trucks, agricultural machinery, construction equipment, trailers, and specialist vehicles. Equipped with modern infrastructure and a skilled team, our port ensures that RoRo and automotive shipments are processed swiftly, minimising turnaround times and guaranteeing that cargo arrives at its destination in optimal condition.

What we handle:

Imports and exports.

Specialised machinery and industrial equipment.

Trailers and larger leisure vehicles.

8 specialised RoRo berths.

300,000+ vehicles handled annually at London Medway.

Pre-delivery Inspection (PDI) facilities and compounds operated by partners.



Paper handling

Our bespoke paper-handling service includes specialised storage facilities and purpose-built areas designed to manage sensitive and protected products. Strategically positioned, London Medway is ideally placed to meet the growing global demand for the import and export of specialist forest products.

We are experts in handling a wide variety of paper products, offering reliable and efficient logistics solutions. From book prints and packaging materials to specialty fine papers and tissue products, our facilities are designed to handle each type of paper with the care and precision required to maintain its quality and meet industry standards.

500,000+ tonnes of forestry products handled each year.

100,000m² of paper storage facilities.



Paper commodities we handle:

Newsprint, books and publishing paper.

Kraft paper.

Specialised packaging for the food industry.

Tissue paper and hygiene products.

Specialty fine paper.

Who we work with:





Timber and steel specialists

Timber is one of the most versatile and widely used materials in construction, serving applications ranging from structural frameworks to interior finishes. London Medway's timber-handling capabilities are tailored to meet the growing demand for high-quality timber products, ensuring they are safely and efficiently delivered to projects across the UK.

Steel is fundamental to the construction, manufacturing, and heavy industry sectors. As a key distribution hub, London Medway offers specialised facilities, and equipment including a state-of-the-art steel magnet for enhanced safety and speed. Whether it's structural steel for buildings or rebar for reinforced concrete, London Medway ensures that steel products are handled efficiently and safely, helping to keep vital projects on track.

200,000

tonnes of timber handled per year.

100,000

tonnes of timber treatment per year.

200,000

tonnes steel handled per year.

Timber and steel capabilities:

Industrial and manufacturing handling expertise.

Specialised steel handling facilities.

Ability to work with renewable energy projects.

Who we work with:





Project cargo

We understand that every project is unique, which is why we specialise in creating customised import and export plans tailored to each customer's specific needs.

Project cargo exemplifies our versatility, as we handle a wide range of complex items, including construction equipment, industrial machinery, wind turbines, and other renewable energy components. London Medway's dedicated project cargo facilities and expert team make it a trusted hub for managing this demanding cargo type with precision and reliability.

Our project cargo benefits:

Proximity to key project sites.

No lock/air draught restrictions or lengthy river navigation for quick load/discharge service.

24/7 operational port.



Who we work with:

Some of our partners include



Chiquita holds a dedicated ripening facility on-site, enabling efficient import and distribution of fresh bananas directly from our port to markets across the UK and Europe.



We streamline Smurfit Westrock's imports and exports of forestry products, providing tailored storage and handling solutions to maintain product quality and ensure timely delivery across supply chains.



Our services help Jenkins remove move large volumes of forestry products with ease, leveraging our port's logistics and warehousing capabilities to optimize their operations in the UK and beyond.



For Ecocem, we provide robust handling and storage solutions for construction materials, allowing for the smooth import and export of eco-friendly cement products crucial to sustainable building projects.



London Medway and Great Yarmouth terminals help Stema reduce road miles and emissions, efficiently supplying major projects like Sizewell C and A11 upgrades, driving sustainability in construction.



London Medway and Great Yarmouth terminals help Stema reduce road miles and emissions, efficiently supplying major projects like Sizewell C and A11 upgrades, driving sustainability in construction.



PortPlus+

Offered across each of our port locations, PortPlus+ highlights what we do beyond exports and imports. Peel Ports Group is more than ports. We can provide solutions and logistics across the entire supply chain.

Keep all of your logistics solutions under one roof, Store, Process, Develop and Move with PortPlus+.

+Store

Safely store and protect your goods with flexible on-site warehousing space and on-demand capacity.



+Process

Let our experts take control of your cargo, with added-value handling and processing solutions.



+Move

Take advantage of our end to end cargo movement services, across road, rail and sea.



+Develop

Utilise our secure port locations with cost efficient and bespoke property options.





Skilled teams delivering excellence

- Robust health & safety culture.
- Specialist employees who are experts in key areas such as marine and cargo lifting and handling operations and NPORS.



Ensuring safe and secure operations

- Security measures: CCTV, 24/7 monitoring and on-site security guards.
- Compliance with ISPS and environmental regulations.



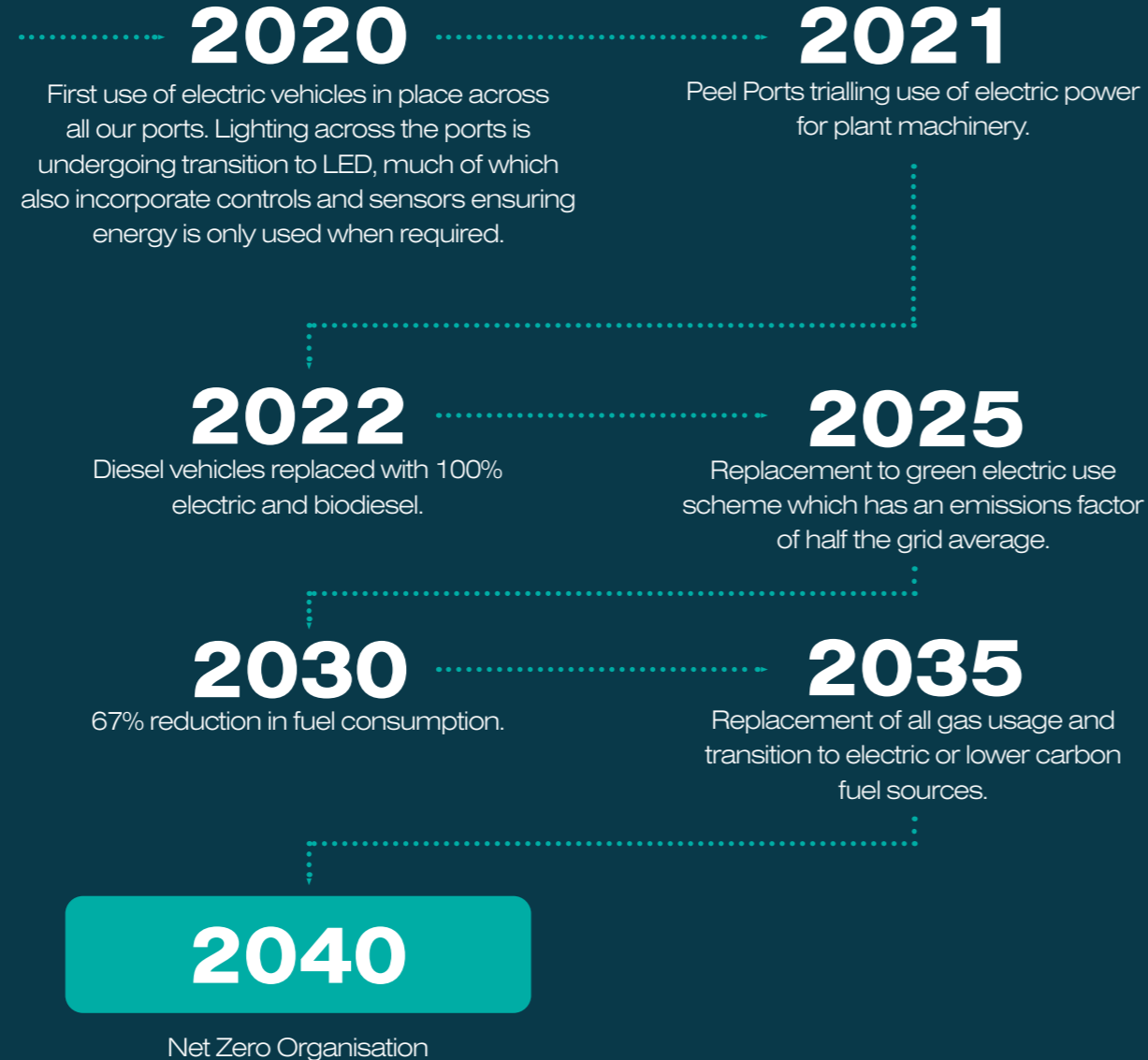
LEADING THE WAY

Our own net zero journey

At Peel Ports Group, sustainability is at the heart of all we do. As one of the UK's largest port operators, and a major employer in the areas where we operate, we are fully aware of the role we need to play in driving a sustainable agenda.

On an environmental front, we've made an industry-leading commitment to become a net zero port operator by 2040, ten years ahead of UK government targets.

Since then, and just in the last three years, we have reduced our operational Scope 1 and 2 emissions by over 40%. Our approach and leadership in this area has been widely recognised by peers with a raft of industry awards and accolades.



Partner with London Medway

Get in touch to explore how we can support your business growth.
london.medwaysales@peelports.com

London Medway
London Medway Head Office
Warehouse 6 Office Space
Sheerness Dock
Sheerness
ME12 1RS
Phone Number - +44 (0)1795 596596

Peel Ports Group
Head Office
Maritime Centre
Liverpool
L21 1LA
Phone Number - +44 (0)151 949 6000

Download
Your digital copy here:

