



**MERSEY DOCKS AND HARBOUR COMPANY LTD**

Gary Doyle  
Group Harbour Master

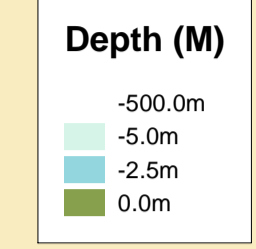
River Mersey

**LPR002\_4\_2023\_002C**  
**Cammell Laird's Wall**

Surveyed by: BWL  
Processed by: BWL  
Checked by: RK  
Surveyed: 2nd June 2024  
Issued: 3rd June 2024

**DEPTHS**  
Depths are in metres and are reduced to chart datum being 4.93m below Ordnance Datum (Newlyn), which is approximately the level of Lowest Astronomical Tide.

**HEIGHTS**  
Heights are in metres. Underlined figures show heights above Chart Datum.

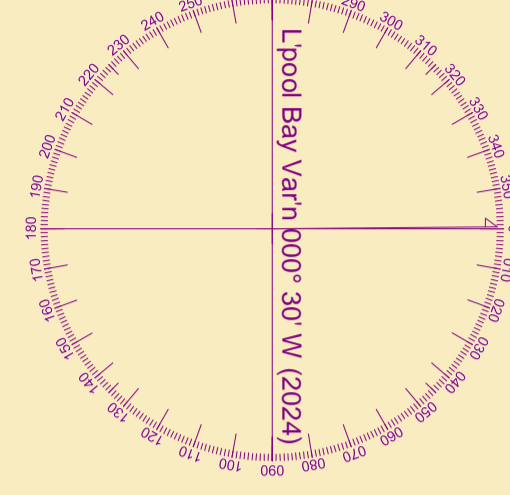


**POSITIONS**  
Positions are referred to OSGB36 National Grid Datum.

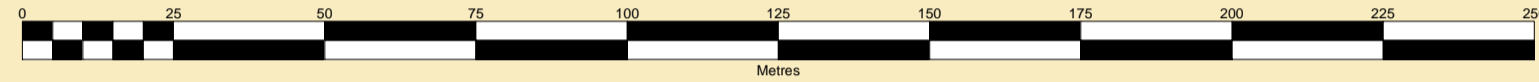
**UKHO & NTMS**  
When using this chart please refer to UKHO Admiralty Publications and also local Notice to Mariners and Navigational Warnings.

**TOPOGRAPHY**  
The shore features on this chart are based largely on Ordnance Survey digital mapping data with permission of HMSO. © Crown Copyright 2024. Peel Licence Number 100018033.

**FLATS & SANDBANKS**  
**CAUTION OWING TO FREQUENT CHANGES IN DEPTHS AND POSITIONS OF FLATS AND SANDBANKS THIS CHART SHOULD BE USED WITH CAUTION.**



SCALE 1:1250 at A1



Pontoon and Moorings in this area  
(see MD&HC Ltd Notice to Mariners No 24 - 2012.)

Sill level 2.55m below CD(75)

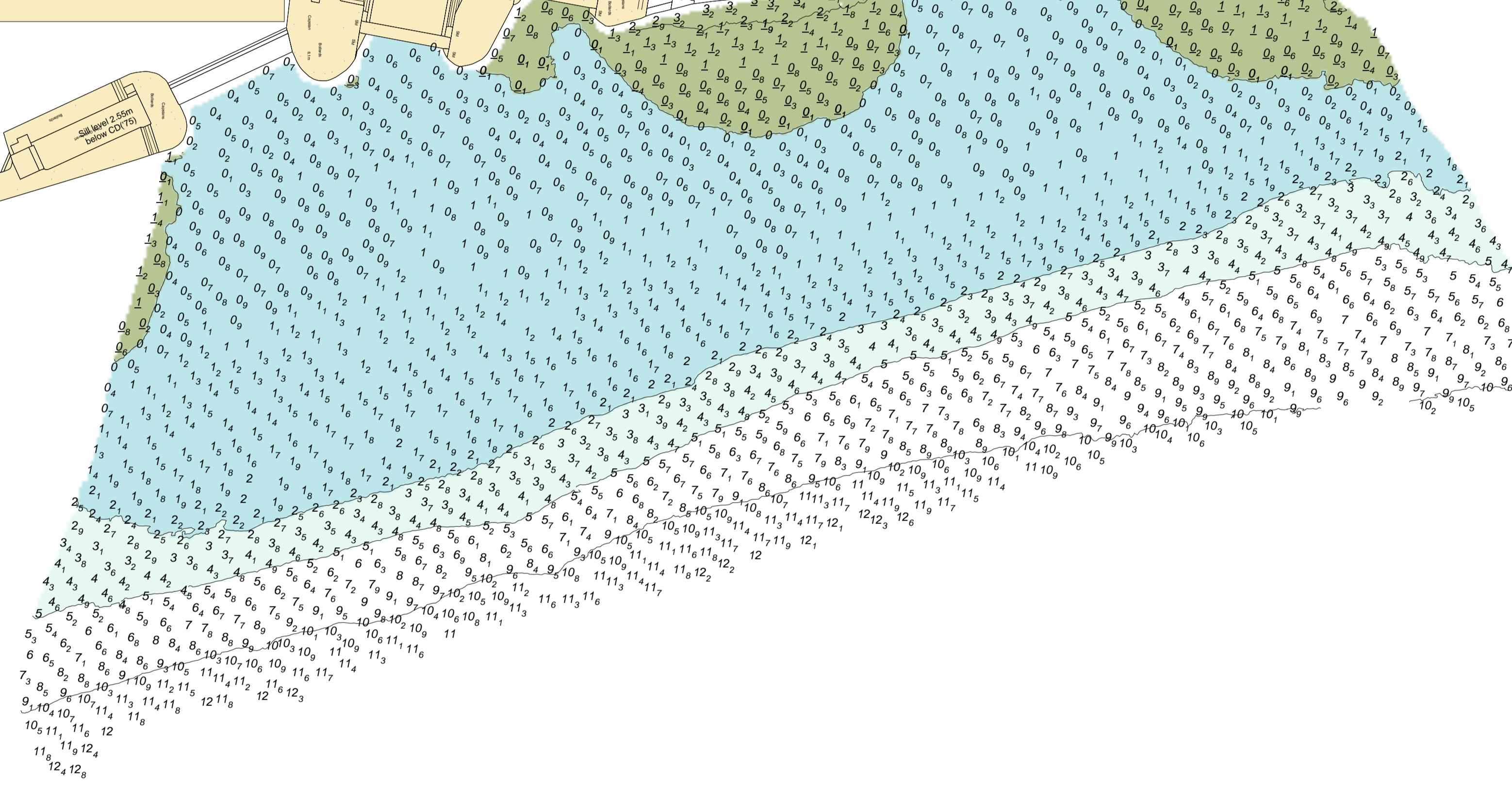
No 7 Sill level 0.56m below CD(75)  
Graving Dock (No 7)

No 8 Sill level 0.16m above CD(75)  
Graving Dock (No 8)

The Princess Dock  
Graving Dock (No 3)

No 6 Sill level 1.02m below CD(75)

No 4 Sill level 1.71m above CD(75)  
Graving Dock (No 4)



See Chart L1000