

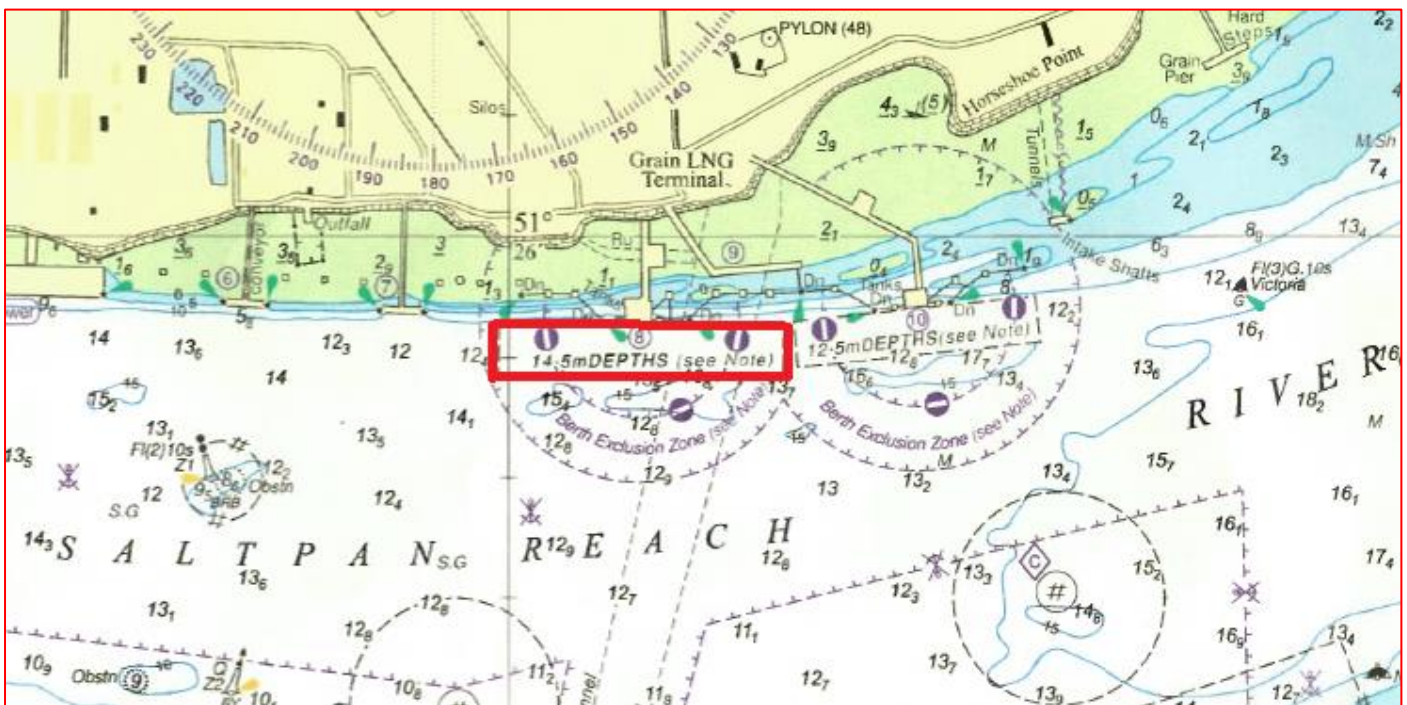
# NOTICE TO MARINERS

## No. 06 – 2025.

### River Medway – Saltpan Reach Grain LNG Jetty 8 – Inspection works/Anode Testing

Notice is hereby given that: Pile Inspection/Anode testing is due to take place at Isle of Grain LNG Jetty 8. Work is expected to commence on or around Thursday 27<sup>th</sup> February 2025 and is expected to run for a period of 2 weeks. Craft involved will be the ‘Avocet’ and a small rib tender ‘Retriever’ who will maintain a listening watch on VHF Channel 74 and display day signals for respective operations. The inspection will take place along the face of the structure and underneath the jetty head.

**All vessels passing Grain LNG Jetty 8 should navigate with caution, observe the LNG Jetty exclusion zone at all times and reduce speed and minimise wash accordingly.**



Admiralty Chart No.1834 refers.

Further information may be obtained from Medway VTS on VHF Channel 74, call sign “Medway VTS” or telephone 0151 949 6148 or 0151 949 6650. **(Recorded Lines)**

Marine Operations Department  
Peel Ports London Medway

25<sup>th</sup> February 2025