



**MERSEY DOCKS AND HARBOUR COMPANY LTD**

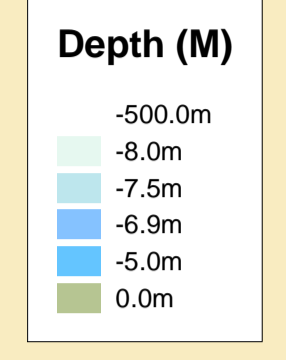
Gary Doyle  
Group Harbour Master

Liverpool Channel

LPC004\_3\_2022\_007  
Queen's Channel East

**DEPTHS**  
Depths are in metres and are reduced to chart datum being 4.93m below Ordnance Datum (Newlyn), which is approximately the level of Lowest Astronomical Tide.

**HEIGHTS**  
Heights are in metres. Underlined figures show heights above Chart Datum.



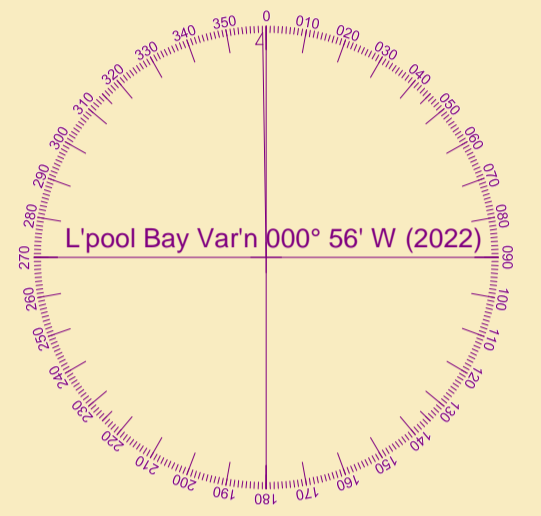
**POSITIONS**  
Positions are referred to OSGB36 National Grid Datum.

**UKHO & NTMS**  
When using this chart please refer to UKHO Admiralty Publications and also local Notice to Mariners and Navigational Warnings.

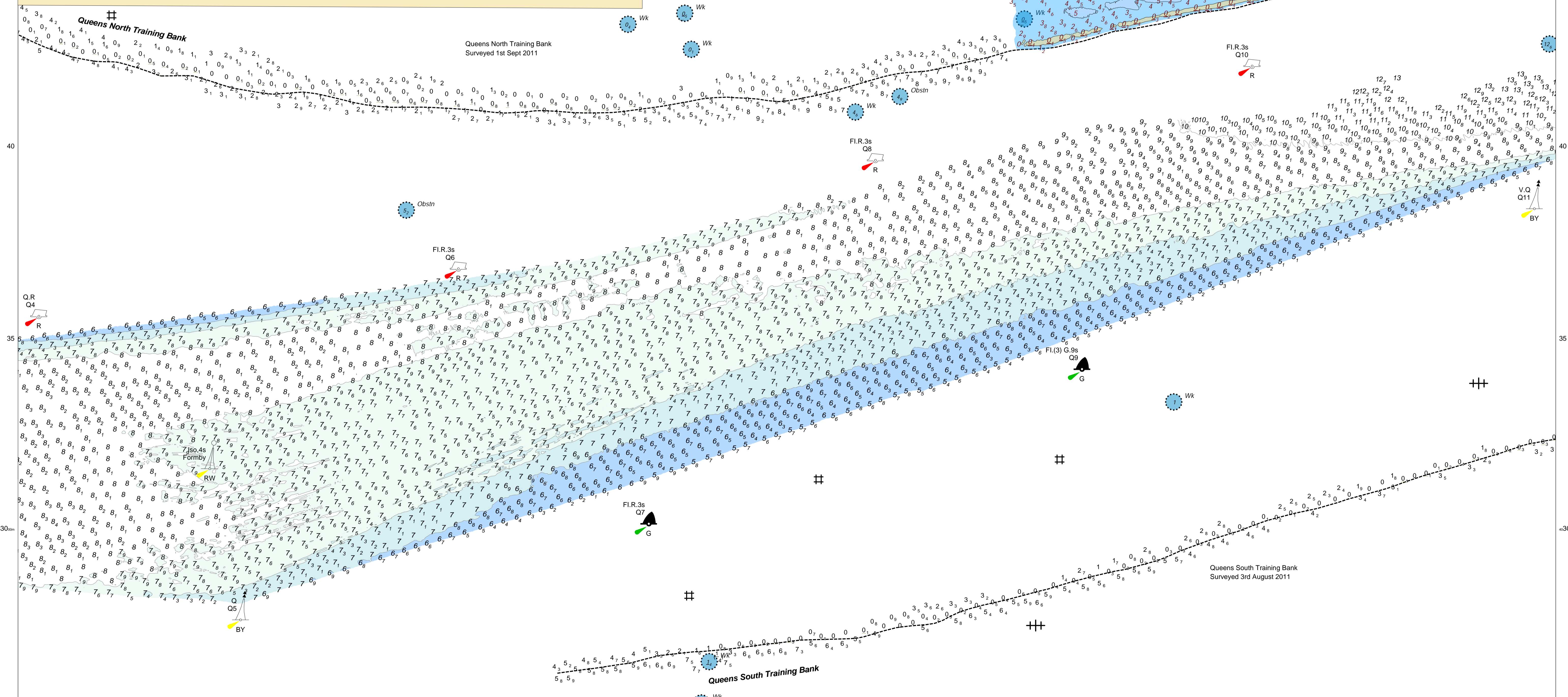
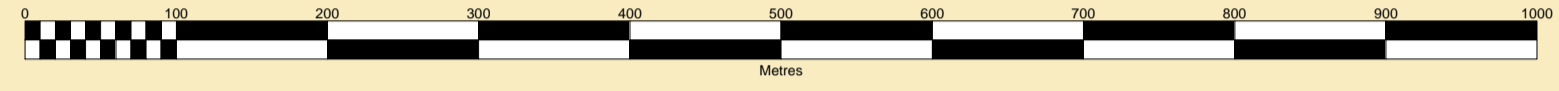
**TOPOGRAPHY**  
The shore features on this chart are based largely on Ordnance Survey digital mapping data with permission of HMSO. © Crown Copyright 2022. Peel Licence Number 100018033.

**FLATS & SANDBANKS**  
**CAUTION OWING TO FREQUENT CHANGES IN DEPTHS AND POSITIONS OF FLATS AND SANDBANKS THIS CHART SHOULD BE USED WITH CAUTION.**

Surveyed by: VO  
Processed by: VO  
Checked by: RK  
Surveyed: 14th November 2022  
Issued: 17th November 2022



SCALE 1:5000 at A1



50.0m

45

40

35

30.0m

50.0m

45

40

35

30.0m

OSGB36

OSGB36