

**MERSEY DOCKS AND HARBOUR COMPANY LTD**

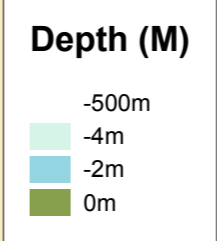
Gary Doyle  
Group Harbour Master

Liverpool Docks

LPD006\_1\_2022\_004  
Huskisson Dock  
& Branches

**DEPTHS**  
Depths are in metres and are reduced to chart datum being 4.93m below Ordnance Datum (Newlyn), which is approximately the level of Lowest Astronomical Tide.

**HEIGHTS**  
Heights are in metres. Underlined figures show heights above Chart Datum.

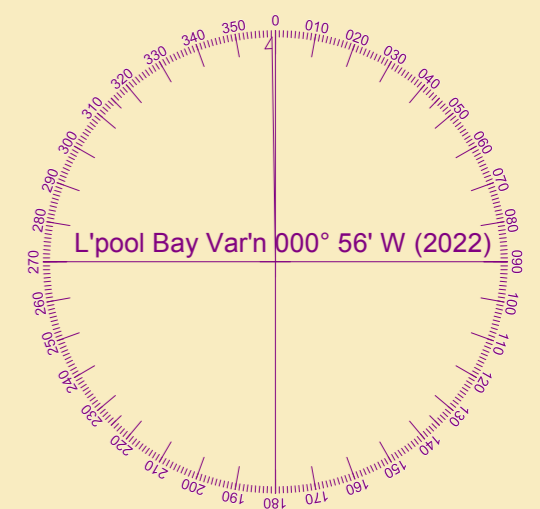


**POSITIONS**  
Positions are referred to OSGB36 National Grid Datum.

**UKHO & NTMS**  
When using this chart please refer to UKHO Admiralty Publications and also local Notice to Mariners and Navigational Warnings.

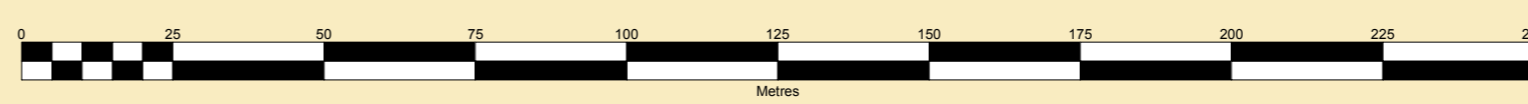
**TOPOGRAPHY**  
The shore features on this chart are based largely on Ordnance Survey digital mapping data with permission of HMSO. © Crown Copyright 2022. Peel Licence Number 100018033.

**FLATS & SANDBANKS**  
CAUTION OWING TO FREQUENT CHANGES IN DEPTHS AND POSITIONS OF FLATS AND SANDBANKS THIS CHART SHOULD BE USED WITH CAUTION.



Vessel:	Royal Charter
Surveyed by:	NM
Processed by:	NM
Checked by:	NM
Surveyed:	19th July 2022
Issued:	20th July 2022

SCALE 1:1250 at A1



**Please note:**  
Wellington Dock is no longer a working dock