



**MERSEY DOCKS AND
HARBOUR COMPANY LTD**

Gary Doyle
Group Harbour Master

River Mersey

LPR002_6_2023_002

Garston Bar

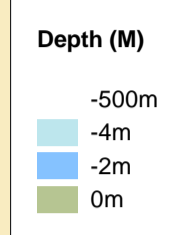
Vessel:	Royal Charter
Surveyed by:	FJT
Processed by:	FJT
Checked by:	RK
Surveyed:	4th April 2023
Issued:	5th April 2023

DEPTHS

Depths are in metres and are reduced to chart datum being 4.93m below Ordnance Datum (Newlyn), which is approximately the level of Lowest Astronomical Tide.

HEIGHTS

Heights are in metres. Underlined figures show heights above Chart Datum.



POSITIONS

Positions are referred to OSGB36 National Grid Datum.

UKHO & NTMS

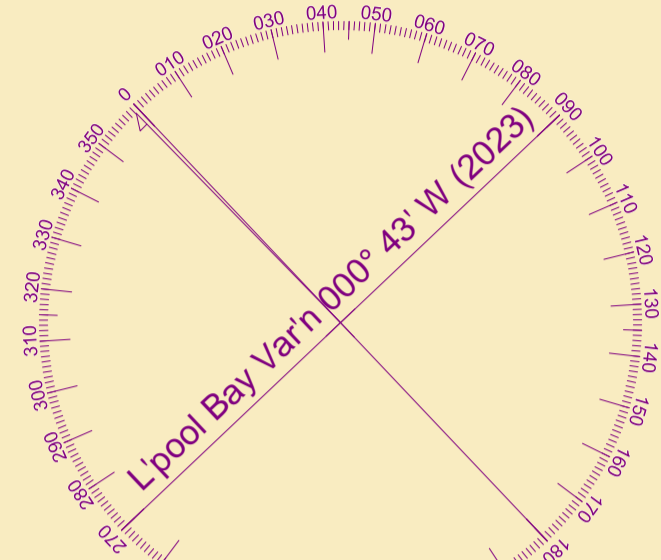
When using this chart please refer to UKHO Admiralty Publications and also local Notice to Mariners and Navigational Warnings.

TOPOGRAPHY

The shore features on this chart are based largely on Ordnance Survey digital mapping data with permission of HMSO. © Crown Copyright 2023. Peel Licence Number 100018033.

FLATS & SANDBANKS

CAUTION OWING TO FREQUENT CHANGES
IN DEPTHS AND POSITIONS OF FLATS AND
SANDBANKS THIS CHART SHOULD BE USED
WITH CAUTION.



SCALE 1:2500 at A1

