

NOTICE TO MARINERS No 34/23

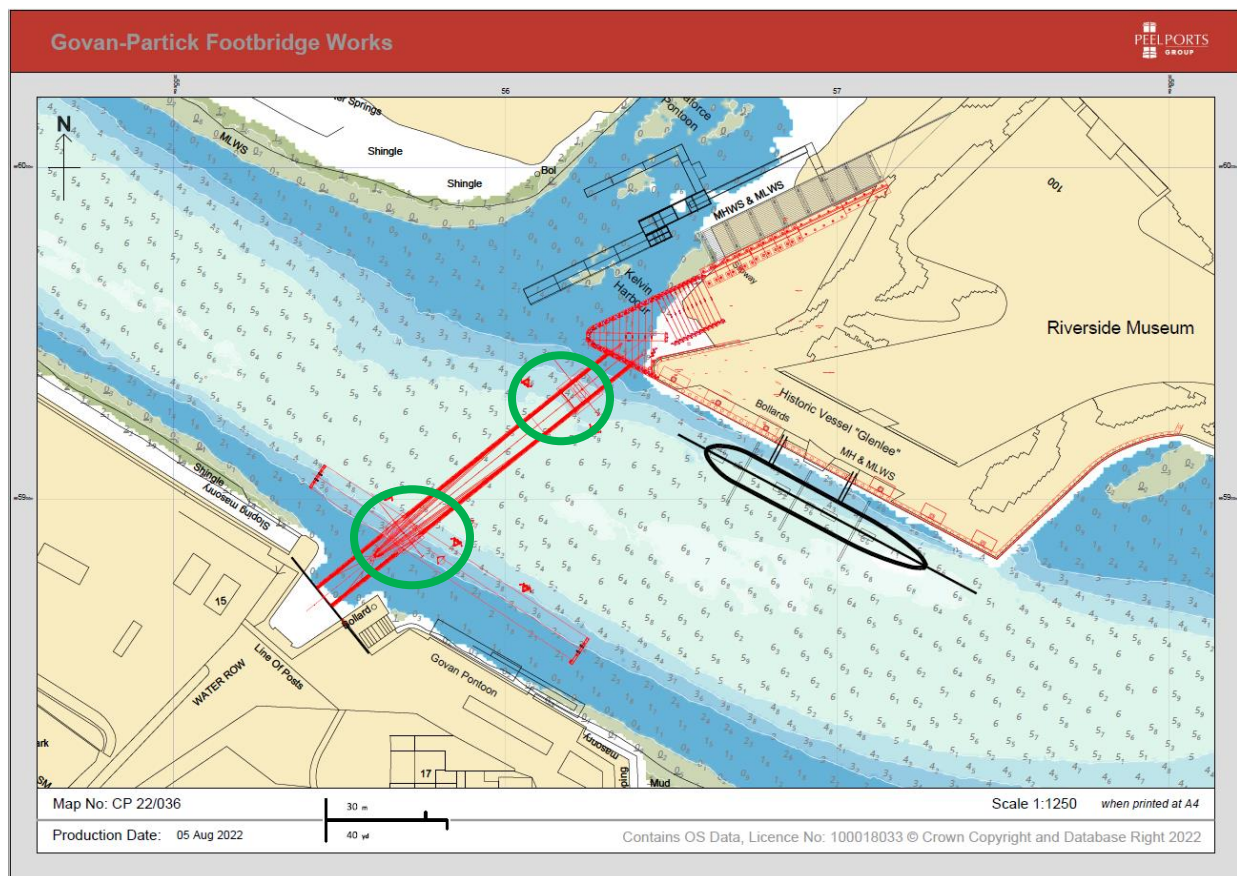
RIVER CLYDE – CONSTRUCTION OF GOVAN TO PARTICK FOOTBRIDGE

Chart 2007 Plan D

Mariners are advised that works associated with building a new opening footbridge across the River Clyde between Govan and Partick are ongoing. Cofferdams have been established to enable bridge pier construction and new fenders and bridge locking piles have been installed. The green circles indicate the locations of the cofferdams. The bridge span is not yet in place.

Barge CW-6 and split hopper barge continue to support the works until approximately end of March 2023, with CW-6 and multicat remaining until approximately end of April 2023.

Mariners are requested to navigate with caution in this area and pass the construction site at appropriate speed.



Estuary Radio may be contacted on VHF Ch 12 or on ☎ 0151 949 6651.

BARGE CW-6

