



DEPTHS
Depths are in metres and are reduced to chart datum being 4.93m below Ordnance Datum (Newlyn), which is approximately the level of Lowest Astronomical Tide.

TOPOGRAPHY
The shore features on this chart are based largely on Ordnance Survey digital mapping data with permission of HMSO. © Crown Copyright 2023. Peel Licence Number 100018033.

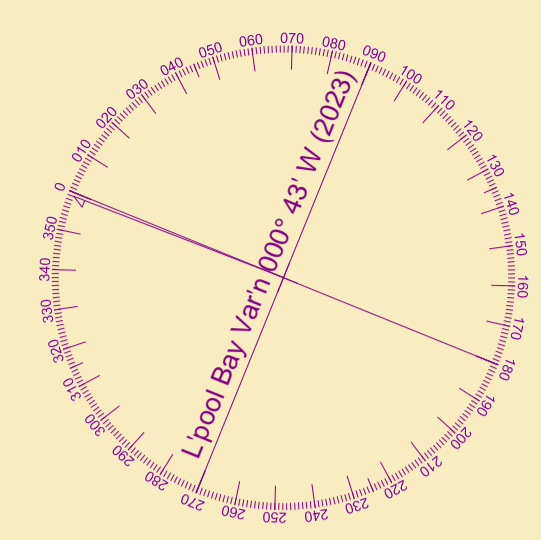
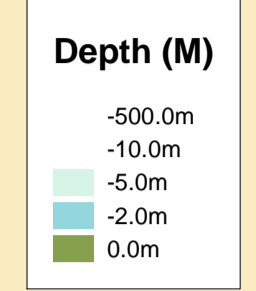
POSITIONS
Positions are referred to OSGB36 National Grid Datum.

UKHO & NTMS
When using this chart please refer to UKHO Admiralty Publications and also local Notice to Mariners and Navigational Warnings.

HEIGHTS
Heights are in metres. Underlined figures show heights above Chart Datum.

FLATS & SANDBANKS
CAUTION OWING TO FREQUENT CHANGES IN DEPTHS AND POSITIONS OF FLATS AND SANDBANKS THIS CHART SHOULD BE USED WITH CAUTION.

Surveyed by: WLH
Processed by: WLH
Checked by: WLH
Surveyed: 9th January 2023
Issued: 11th January 2023
Vessel: Royal Charter

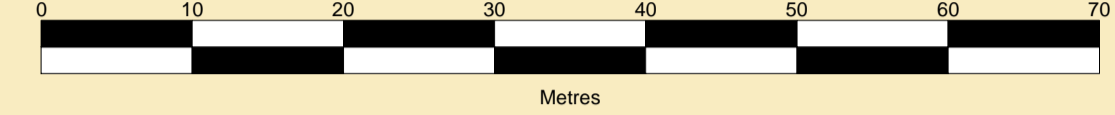


MERSEY DOCKS AND HARBOUR COMPANY LTD

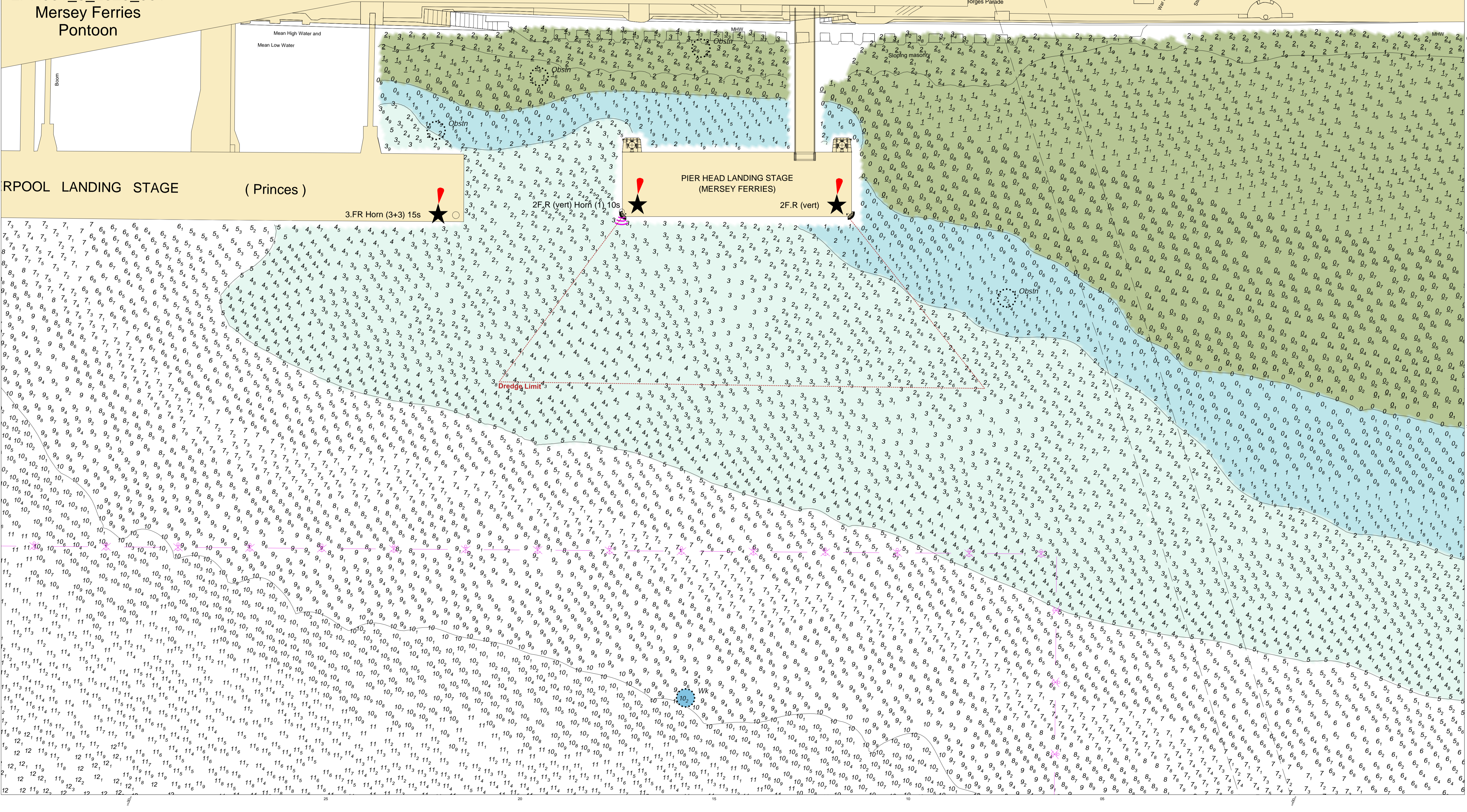
Gary Doyle
Group Harbour Master

River Mersey

SCALE 1:500 at A1



LPR001_8_2023_001
Mersey Ferries
Pontoon



RPOOL LANDING STAGE (Princes)

PIER HEAD LANDING STAGE (MERSEY FERRIES)

3.FR Horn (3+3) 15s

2.F.R (vert) Horn (1) 10s

2.F.R (vert)

Dredge Limit

WK 99

Leeds and Liverpool Canal

Jorges Parade

War Mill

War Mill

Statue