

## NtoM 10 - 2025

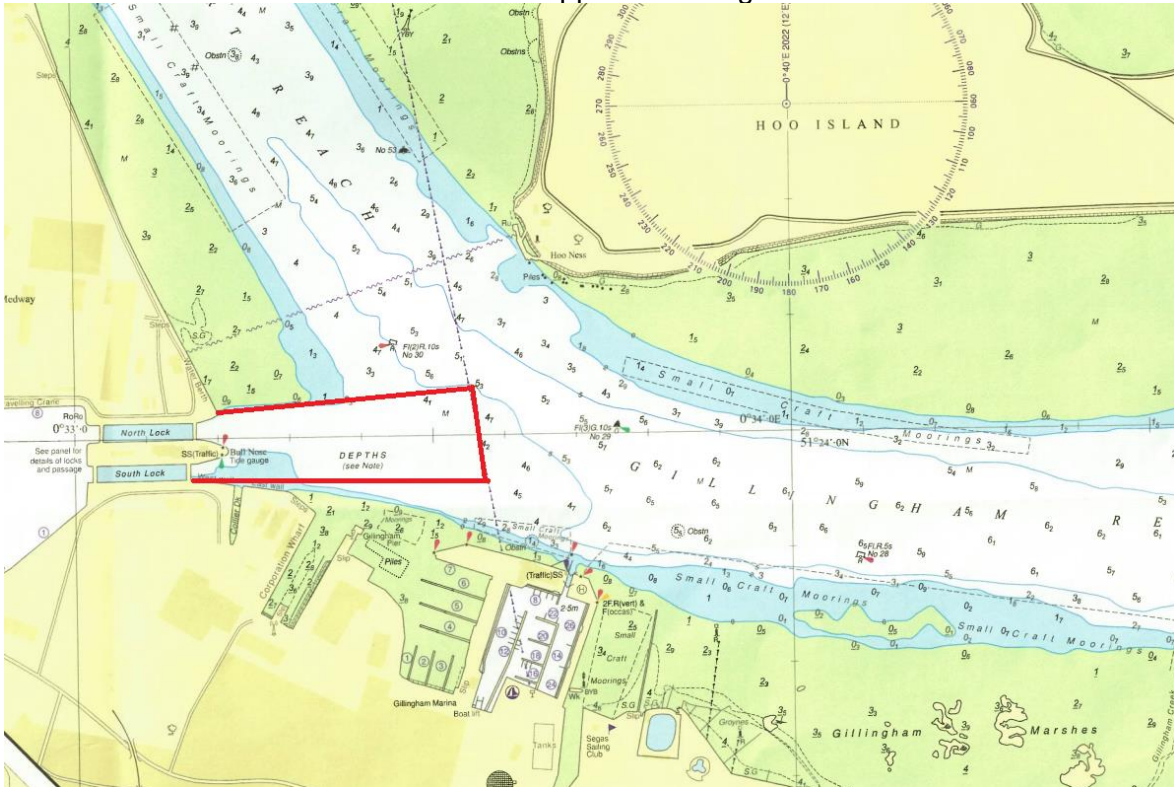
### River Medway – Chatham Lock Approaches & Scotline Terminal – Dredging Operations

**NOTICE IS HEREBY GIVEN** that dredging operations are due to take place in the approaches to Chatham Locks and at Scotline Terminal. Dredging at Chatham approaches is due to commence on or around 11<sup>th</sup> April 2025 with a projected completion date of 20<sup>th</sup> April 2025. Dredging operations will then take place at Scotline terminal on or around 21<sup>st</sup> April 2025 and will be carried out over a single tide. All dredging will be carried out by the water injection dredger ‘Borr’ who will maintain a listening watch on VHF Channel 74 at all times and display the required signals for respective operations by day and night.

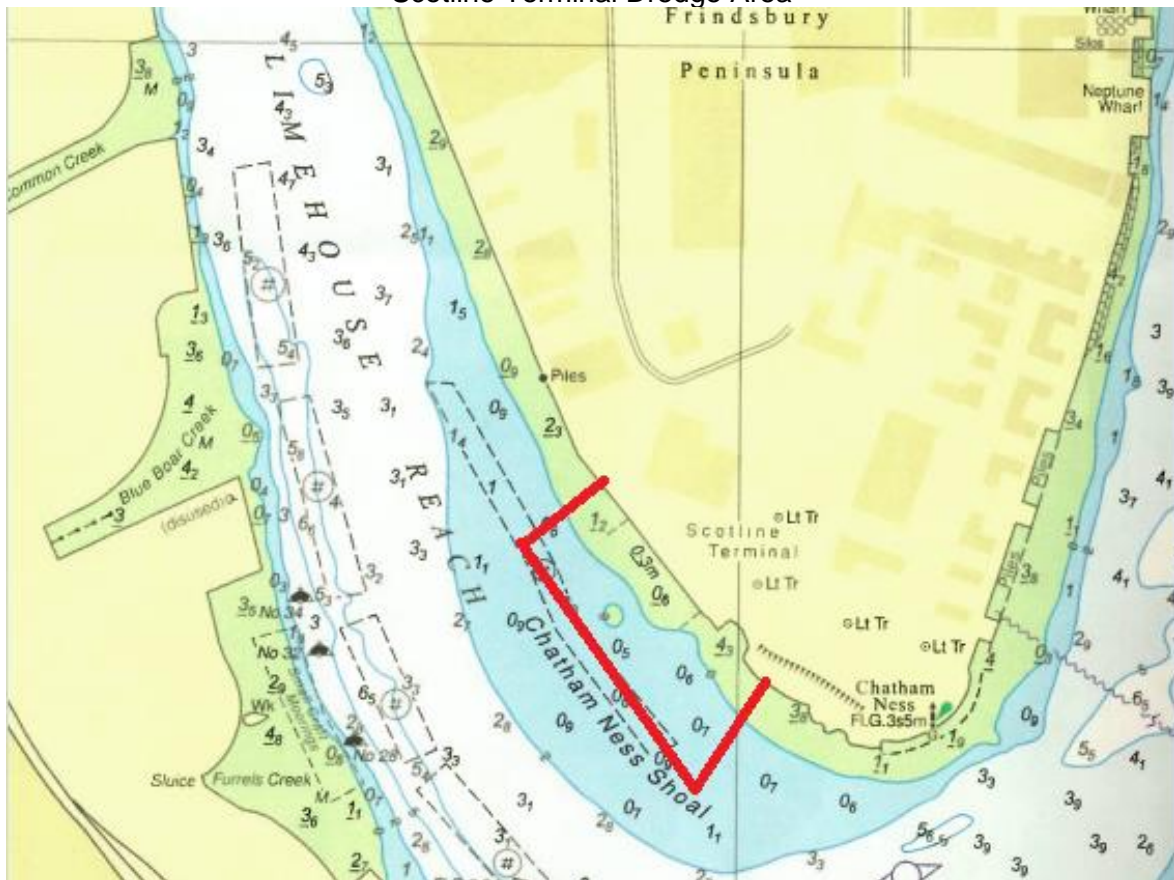
**All vessels passing Chatham Locks and Scotline Terminal for the respective dredging periods are requested to navigate with caution.**



### Chatham Lock Approach Dredge Area



### Scotline Terminal Dredge Area



Admiralty Chart : 1835 refers

Issued on behalf of Port of Sheerness Ltd, the Statutory Harbour Authority for the River Medway and The Swale  
 Telephone calls, VHF radio traffic, CCTV and radar traffic images may be recorded at  
 the Peel Ports Group Port Control Centre, Liverpool.

Further information may be obtained from Medway VTS on VHF Channel 74, call sign “Medway VTS” or telephone 0151 949 6148 or 0151 949 6650 (**Recorded Lines**)

**Marine Operations Department  
Peel Ports London Medway**

Notice Issued: 2<sup>nd</sup> April 2025  
Notice Expiry: 23<sup>rd</sup> April 2025