

# NOTICE TO MARINERS

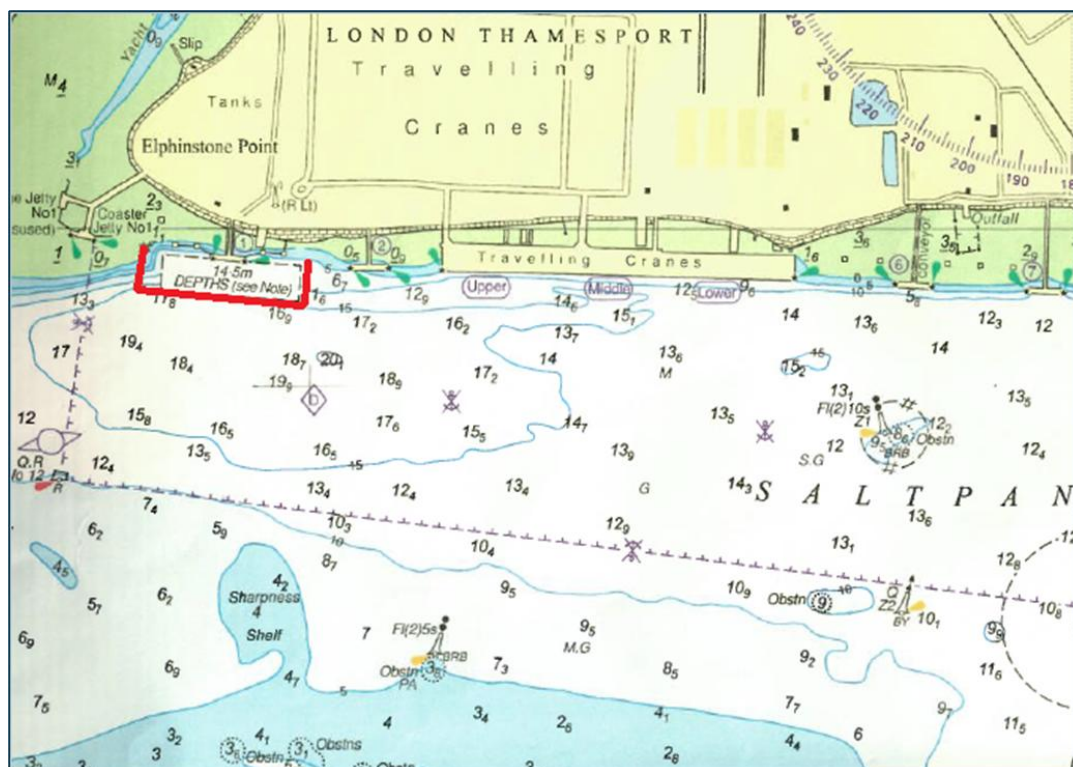
## NtoM 024 - 2026 Updated 01.06.26

### River Medway – Saltpan Reach

### BP Isle of Grain Jetty No.1 – Dredging Operations

**NOTICE IS HEREBY GIVEN THAT:** dredging operations are due to commence at BP Isle of Grain Jetty No.1 on or around 9<sup>th</sup> June 2026 with a projected completion date of 16<sup>th</sup> June 2026. All dredging will be focussed on the berthing box of IOG. Jetty No.1 and will be carried out by the water injection dredger 'Aquadelta'. 'Aquadelta' will maintain a listening watch on VHF Channel 74 at all times and display the required signals for respective operations by day and night.

**All vessels passing Isle of Grain Jetty No.1 during the dredging period are requested to navigate with caution reducing speed and wash accordingly.**



Further information may be obtained from Medway VTS on VHF Channel 74, call sign "Medway VTS" or telephone 0151 949 6148 or 0151 949 6650 (**Recorded Lines**).

**Marine Operations Department  
Peel Ports London Medway**

Notice Issued:  
Notice Expiry:

1<sup>st</sup> June 2026  
17<sup>th</sup> June 2026