



MERSEY DOCKS AND HARBOUR COMPANY LTD

Gary Doyle  
Group Harbour Master

Liverpool Docks

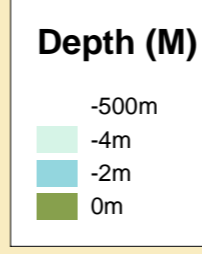
LPD003\_1\_2023\_012  
ALEXANDRA DOCK  
AND BRANCHES

**DEPTHS**  
Depths are in metres and are reduced to chart datum being 4.93m below Ordnance Datum (Newlyn), which is approximately the level of Lowest Astronomical Tide.

**HEIGHTS**  
Heights are in metres. Underlined figures show heights above Chart Datum.

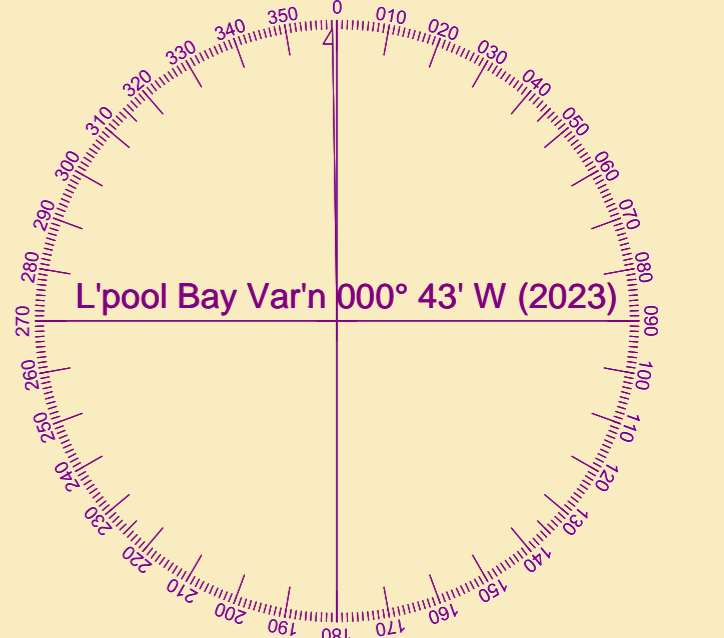
**POSITIONS**  
Positions are referred to OSGB36 National Grid Datum.

**UKHO & NTMS**  
When using this chart please refer to UKHO Admiralty Publications and also local Notice to Mariners and Navigational Warnings.



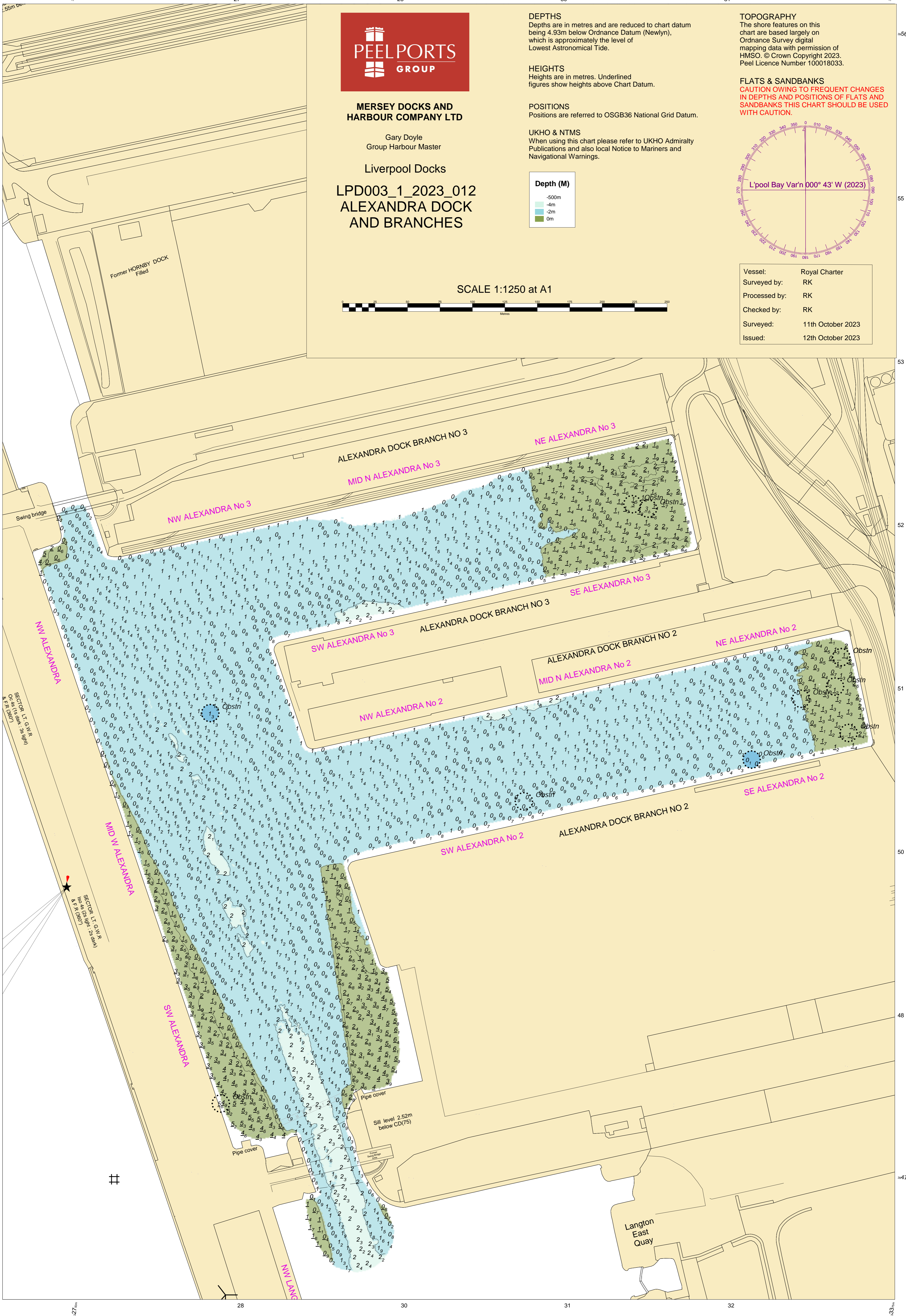
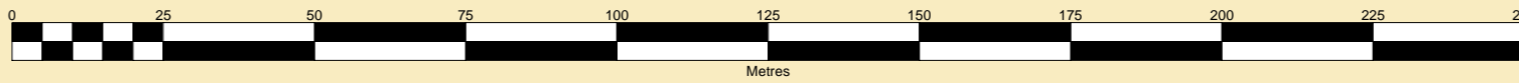
**TOPOGRAPHY**  
The shore features on this chart are based largely on Ordnance Survey digital mapping data with permission of HMSO. © Crown Copyright 2023. Peel Licence Number 100018033.

**FLATS & SANDBANKS**  
CAUTION OWING TO FREQUENT CHANGES IN DEPTHS AND POSITIONS OF FLATS AND SANDBANKS THIS CHART SHOULD BE USED WITH CAUTION.



Vessel:	Royal Charter
Surveyed by:	RK
Processed by:	RK
Checked by:	RK
Surveyed:	11th October 2023
Issued:	12th October 2023

SCALE 1:1250 at A1



Former HORNBY DOCK Filled

Swing bridge

ALEXANDRA DOCK BRANCH NO 3

NE ALEXANDRA No 3

MID N ALEXANDRA No 3

NW ALEXANDRA No 3

NW ALEXANDRA

SW ALEXANDRA No 3

ALEXANDRA DOCK BRANCH NO 3

SE ALEXANDRA No 3

ALEXANDRA DOCK BRANCH NO 2

NE ALEXANDRA No 2

NW ALEXANDRA No 2

MID N ALEXANDRA No 2

MID W ALEXANDRA

SW ALEXANDRA No 2

ALEXANDRA DOCK BRANCH NO 2

SE ALEXANDRA No 2

SW ALEXANDRA

NW ALEXANDRA

Langton East Quay

#