



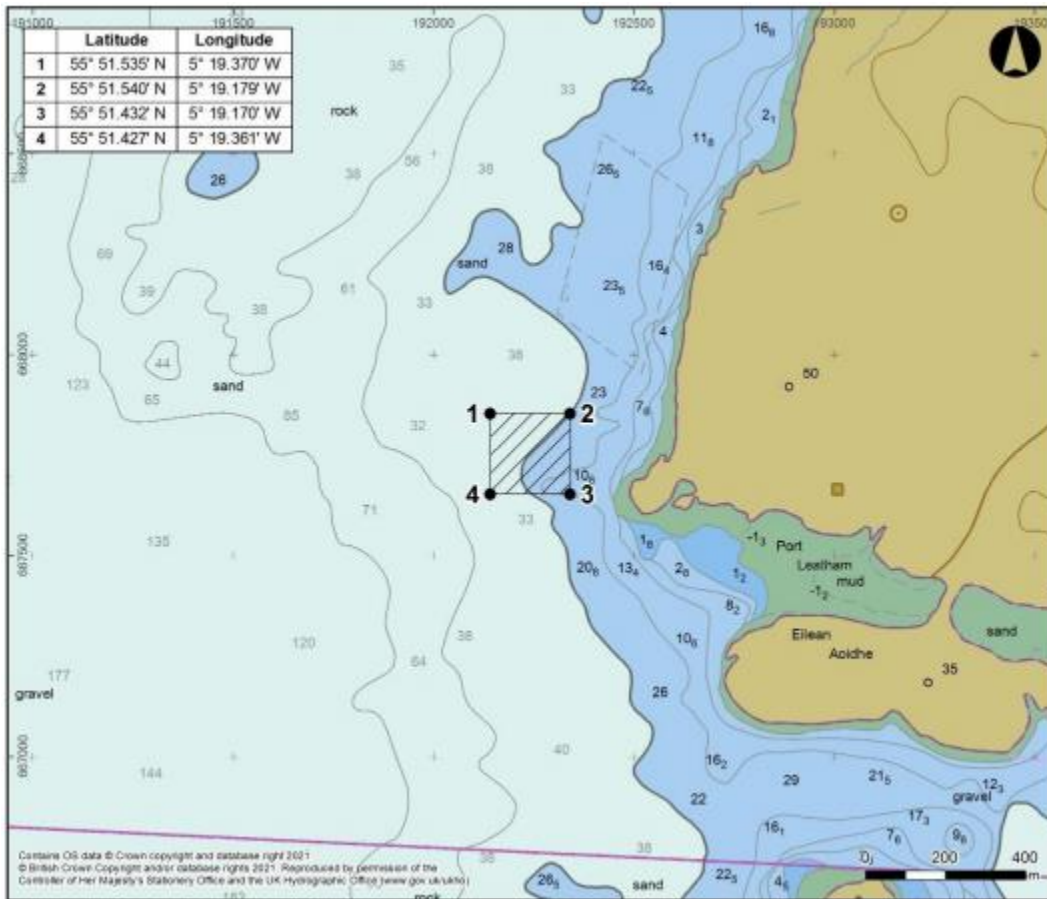
**NOTICE TO MARINERS**

**No 45/21**

**LOCH FYNE – HYDROGRAPHIC SURVEY**

**Chart 2381**

Mariners are advised that from Friday 9<sup>th</sup> July 2021, hydrographic surveys will be taking place in Lower Loch Fyne at the established fish farm area west of Rubha Stillaig Point. The survey will include the deployment of current meters which will remain in place for approximately 100 days. One yellow buoy, marked “survey” and one orange buoy will mark the location.



Charlie Simcox, Senior Manager Marine Operations  
Peel Ports Clydeport, Marine Department,  
Greenock Ocean Terminal, Patrick Street, GREENOCK, PA16 8UU  
Tel: 0151-949 6649  
Email: clydemarinemanagers@peelports.com

NTM: 45/21  
Page: 1 of 2  
Valid from: 7th July 2021  
Expiry Date: 31<sup>st</sup> October 2021



The vessel conducting the operations will be the ERIN JULIA, call sign 2ICB2, and a listening watch will be maintained on VHF Ch 12. Appropriate lights and shapes will be deployed during operational periods.



Estuary Radio may be contacted on VHF 12 or on ☎ 0151 949 6651.

Charlie Simcox, Senior Manager Marine Operations  
Peel Ports Clydeport, Marine Department,  
Greenock Ocean Terminal, Patrick Street, GREENOCK, PA16 8UU  
Tel: 0151-949 6649  
Email: clydemarinemanagers@peelports.com

NTM: 45/21  
Page: 2 of 2  
Valid from: 7th July 2021  
Expiry Date: 31<sup>st</sup> October 2021