



**DEPTHS**  
Depths are in metres and are reduced to chart datum being 4.93m below Ordnance Datum (Newlyn), which is approximately the level of Lowest Astronomical Tide.

**TOPOGRAPHY**  
The shore features on this chart are based largely on Ordnance Survey digital mapping data with permission of HMSO. © Crown Copyright 2022. Peel Licence Number 100018033.

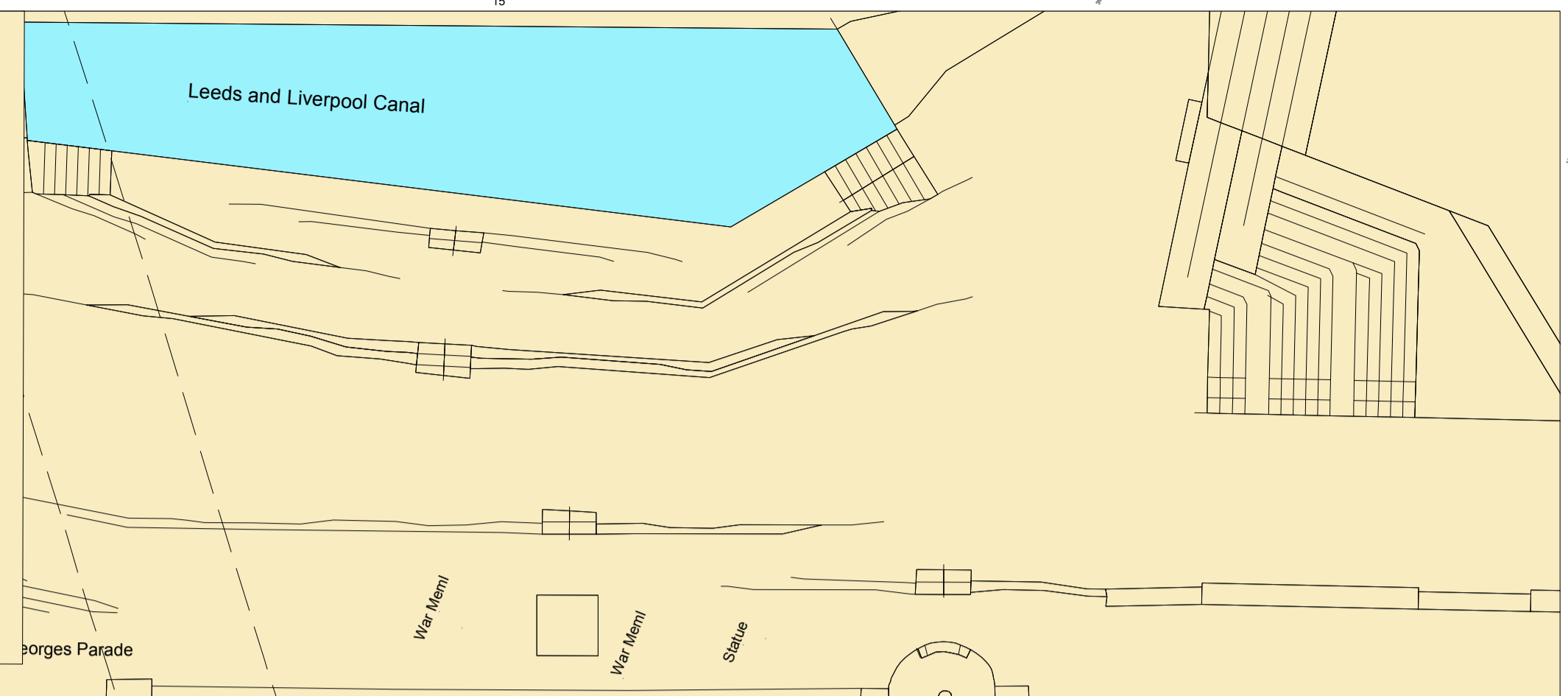
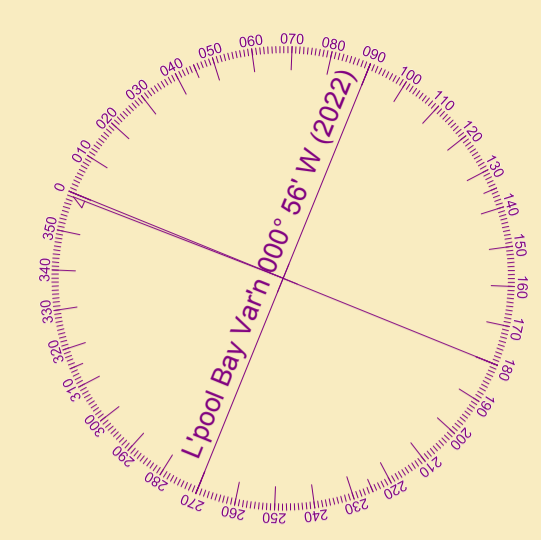
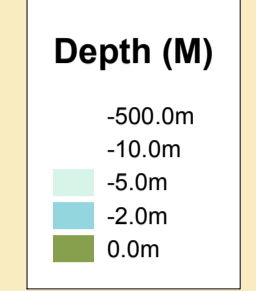
**POSITIONS**  
Positions are referred to OSGB36 National Grid Datum.

**UKHO & NTMS**  
When using this chart please refer to UKHO Admiralty Publications and also local Notice to Mariners and Navigational Warnings.

**HEIGHTS**  
Heights are in metres. Underlined figures show heights above Chart Datum.

**FLATS & SANDBANKS**  
**CAUTION OWING TO FREQUENT CHANGES IN DEPTHS AND POSITIONS OF FLATS AND SANDBANKS THIS CHART SHOULD BE USED WITH CAUTION.**

Surveyed by: CMcF  
Processed by: NM  
Checked by: NM  
Surveyed: 7th January 2022  
Issued: 13th January 2022  
Vessel: Royal Charter

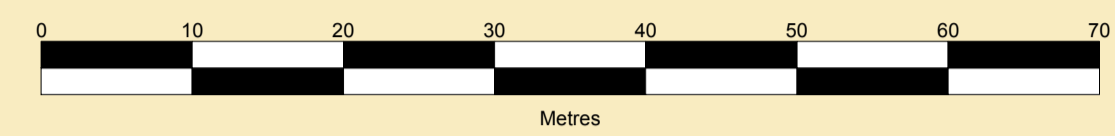


**MERSEY DOCKS AND HARBOUR COMPANY LTD**

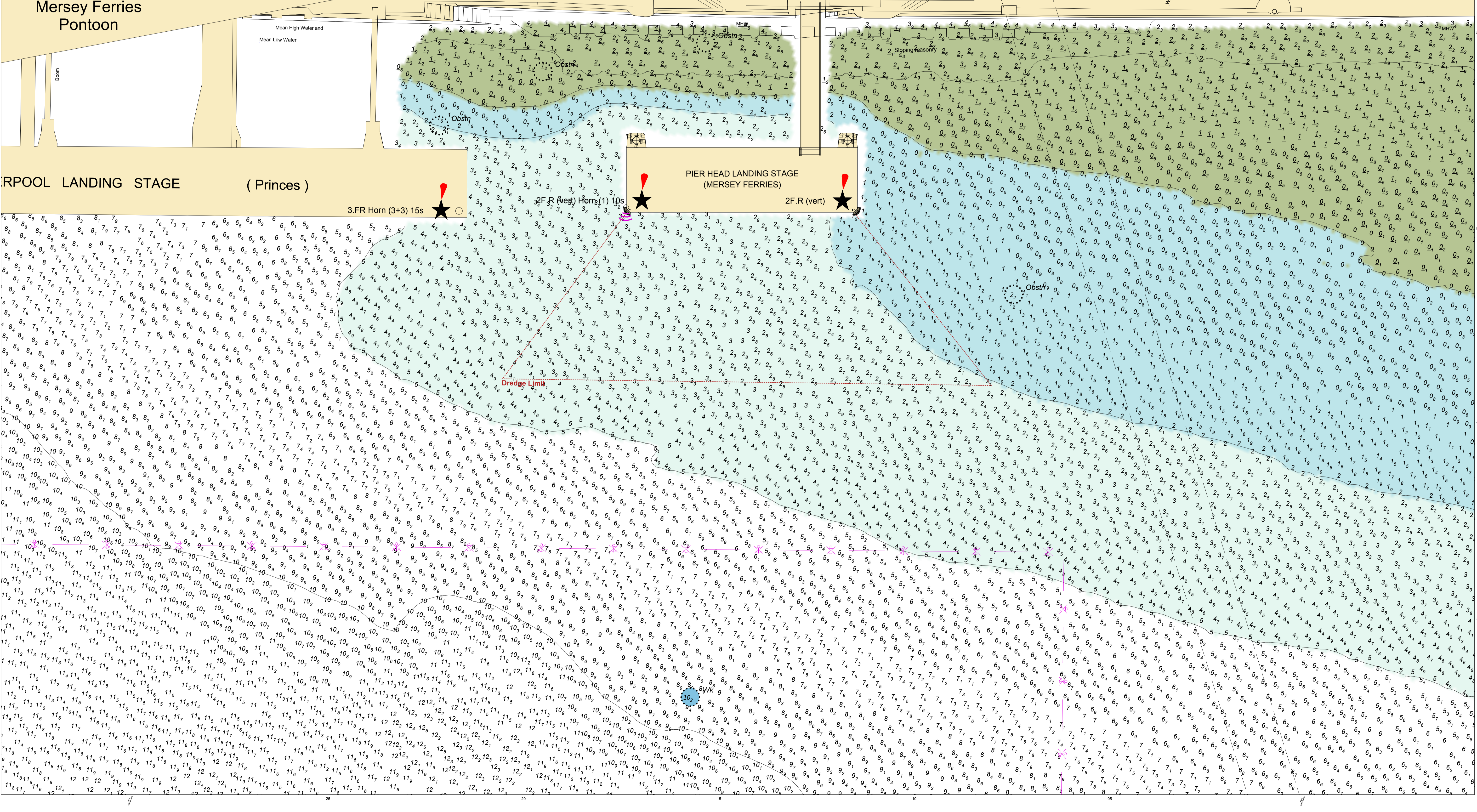
Gary Doyle  
Group Harbour Master

River Mersey

SCALE 1:500 at A1



LPR001\_8\_2022\_001  
Mersey Ferries  
Pontoon



**LIVERPOOL LANDING STAGE (Princes)**

**PIER HEAD LANDING STAGE (MERSEY FERRIES)**

3.FR Horn (3+3) 15s

2.FR (vert) Horns (1) 10s

2.FR (vert)

Dredge Limit

Obstr

Slipping Masonry

Mean High Water and Mean Low Water

Bloom

Georges Parade

War Mem

War Mem

Statue