



**MERSEY DOCKS AND HARBOUR COMPANY LTD**

Gary Doyle  
Group Harbour Master

Liverpool Docks

**LPD004\_1\_2023\_015  
LANGTON & BROCKLEBANK  
DOCKS & BRANCH**

**DEPTHS**

Depths are in metres and are reduced to chart datum being 4.93m below Ordnance Datum (Newlyn), which is approximately the level of Lowest Astronomical Tide.

**HEIGHTS**

Heights are in metres. Underlined figures show heights above Chart Datum.

**POSITIONS**

Positions are referred to OSGB36 National Grid Datum.

**UKHO & NTMS**

When using this chart please refer to UKHO Admiralty Publications and also local Notice to Mariners and Navigational Warnings.

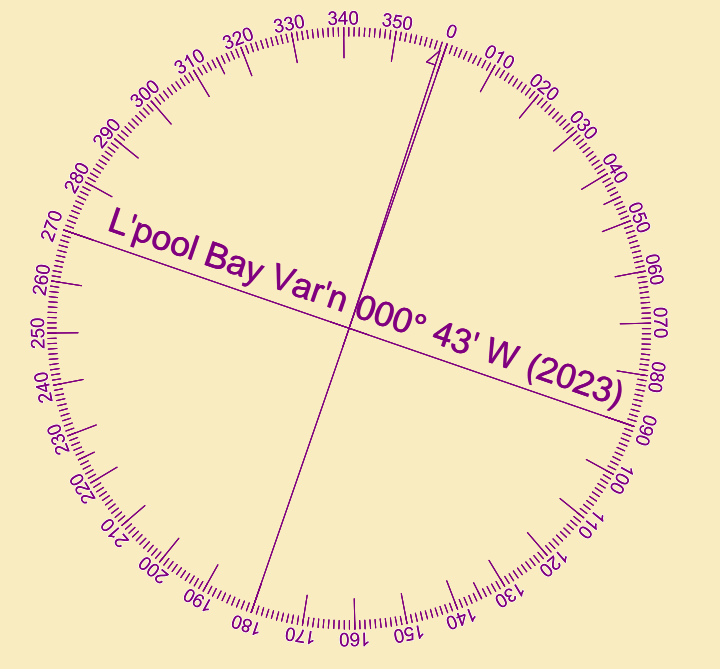
Surveyed by:	VO
Processed by:	VO
Checked by:	NM
Surveyed:	12th May 2023
Issued:	16th May 2023
Lock Surveyed:	3rd May 2023
Vessel:	Porth Wen

**TOPOGRAPHY**

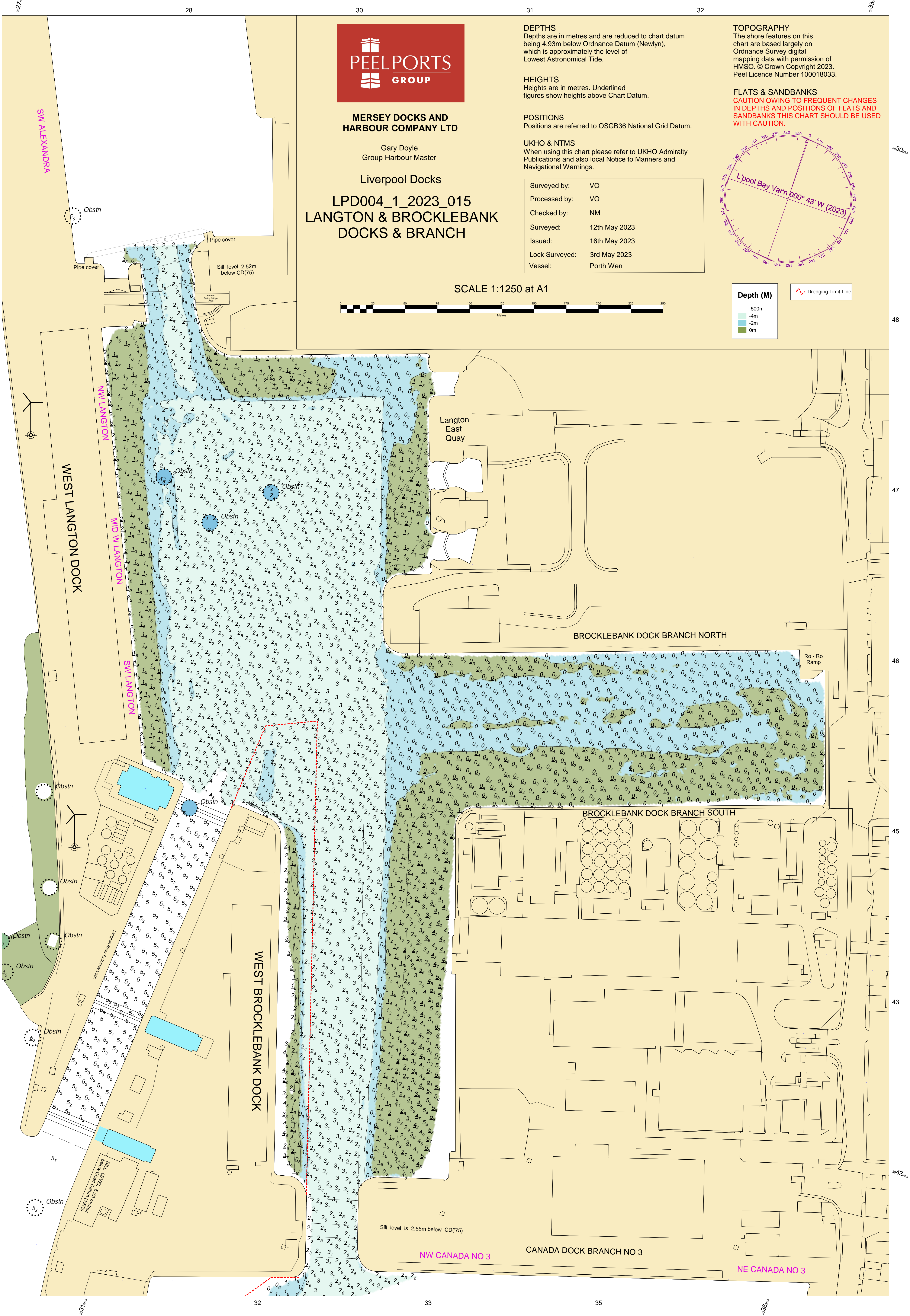
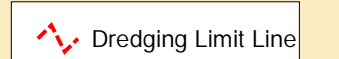
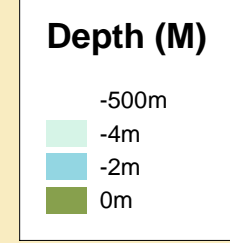
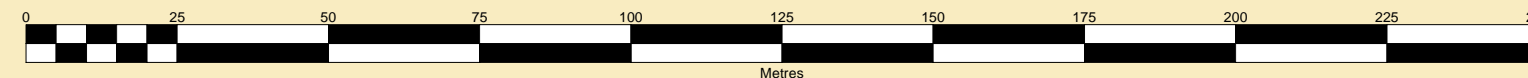
The shore features on this chart are based largely on Ordnance Survey digital mapping data with permission of HMSO. © Crown Copyright 2023. Peel Licence Number 100018033.

**FLATS & SANDBANKS**

**CAUTION OWING TO FREQUENT CHANGES IN DEPTHS AND POSITIONS OF FLATS AND SANDBANKS THIS CHART SHOULD BE USED WITH CAUTION.**



SCALE 1:1250 at A1



SW ALEXANDRA

NW LANGTON

MID W LANGTON

SW LANGTON

WEST BROCKLEBANK DOCK

Langton East Quay

BROCKLEBANK DOCK BRANCH NORTH

BROCKLEBANK DOCK BRANCH SOUTH

CANADA DOCK BRANCH NO 3

Sill level is 2.55m below CD(75)

NW CANADA NO 3

NE CANADA NO 3

Ro-Ro Ramp

Obstn

Pipe cover

Sill level 2.52m below CD(75)

Pipe cover

WEST LANGTON DOCK

Obstn

Obstn

Obstn

Obstn

Obstn

Obstn

Obstn

Sill level 2.55m below CD(75)

Obstn