



MERSEY DOCKS AND HARBOUR COMPANY LTD

Gary Doyle
Group Harbour Master

Liverpool Docks

LPD003_1_2024_008 ALEXANDRA DOCK AND BRANCHES

DEPTHS

Depths are in metres and are reduced to chart datum being 4.93m below Ordnance Datum (Newlyn), which is approximately the level of Lowest Astronomical Tide.

HEIGHTS

Heights are in metres. Underlined figures show heights above Chart Datum.

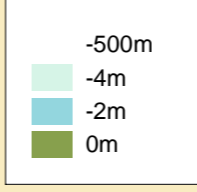
POSITIONS

Positions are referred to OSGB36 National Grid Datum.

UKHO & NTMS

When using this chart please refer to UKHO Admiralty Publications and also local Notice to Mariners and Navigational Warnings.

Depth (M)

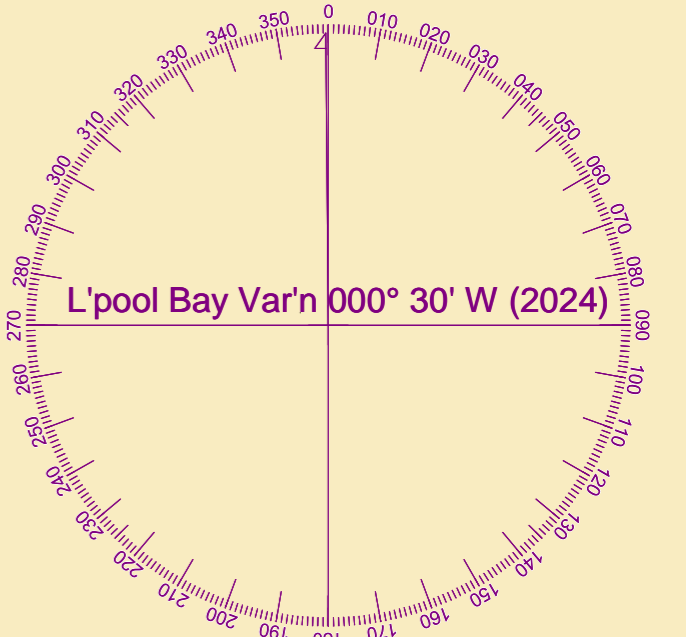


TOPOGRAPHY

The shore features on this chart are based largely on Ordnance Survey digital mapping data with permission of HMSO. © Crown Copyright 2024. Peel Licence Number 100018033.

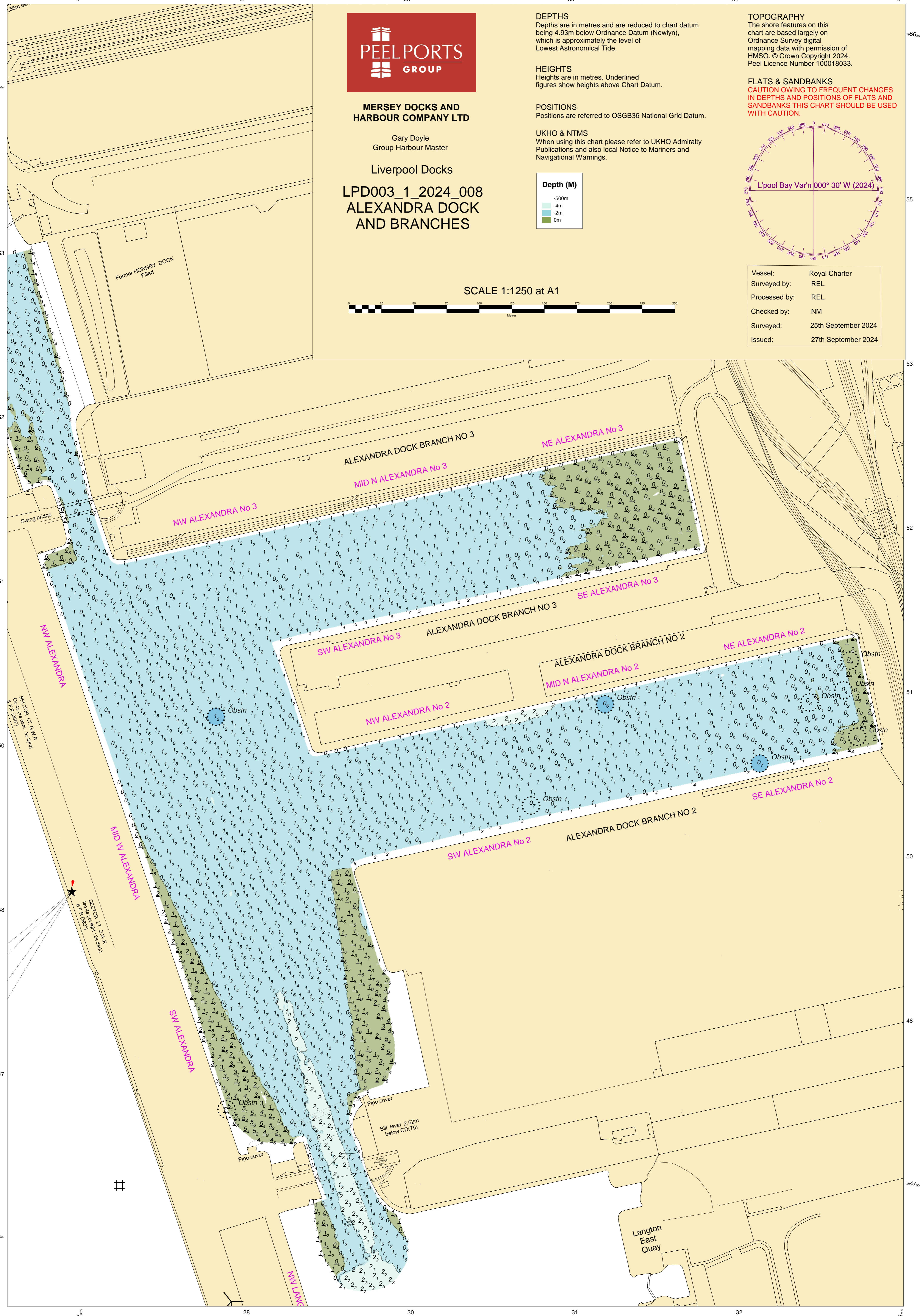
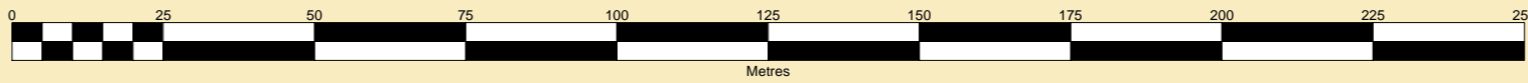
FLATS & SANDBANKS

CAUTION OWING TO FREQUENT CHANGES IN DEPTHS AND POSITIONS OF FLATS AND SANDBANKS THIS CHART SHOULD BE USED WITH CAUTION.



Vessel:	Royal Charter
Surveyed by:	REL
Processed by:	REL
Checked by:	NM
Surveyed:	25th September 2024
Issued:	27th September 2024

SCALE 1:1250 at A1



SECTOR LIGHT: 3s: 10m
Sector Light: 3s: 10m
Sector Light: 3s: 10m

Langton East Quay