



MERSEY DOCKS AND HARBOUR COMPANY LTD

Gary Doyle
Group Harbour Master

Liverpool Docks

**LPD004_1_2025_005
LANGTON & BROCKLEBANK
DOCKS & BRANCH**

DEPTHS

Depths are in metres and are reduced to chart datum being 4.93m below Ordnance Datum (Newlyn), which is approximately the level of Lowest Astronomical Tide.

HEIGHTS

Heights are in metres. Underlined figures show heights above Chart Datum.

POSITIONS

Positions are referred to OSGB36 National Grid Datum.

UKHO & NTMS

When using this chart please refer to UKHO Admiralty Publications and also local Notice to Mariners and Navigational Warnings.

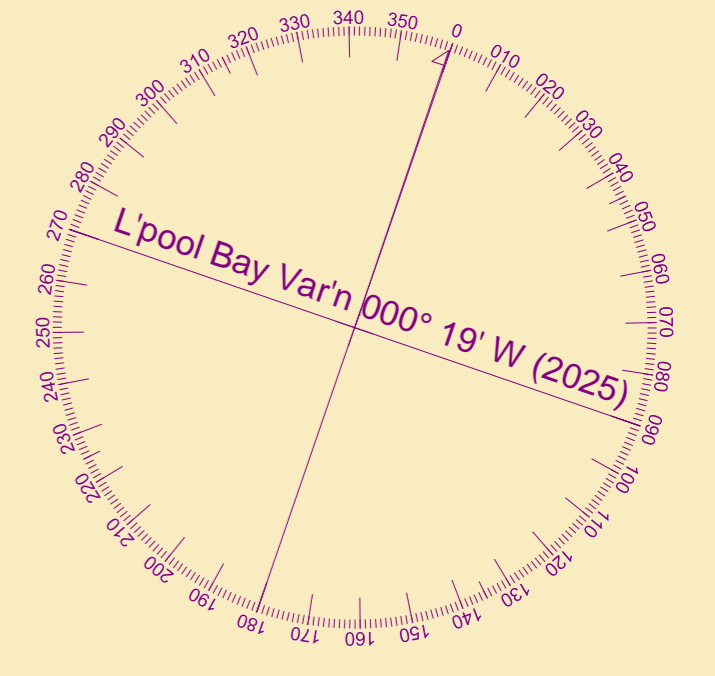
Surveyed by: RK/AJD
Processed by: AJD
Checked by: NM
Surveyed: 10th February 2025
Issued: 11th February 2025
Lock Surveyed: 23rd January 2025
Vessel: Royal Charter

TOPOGRAPHY

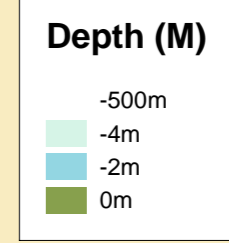
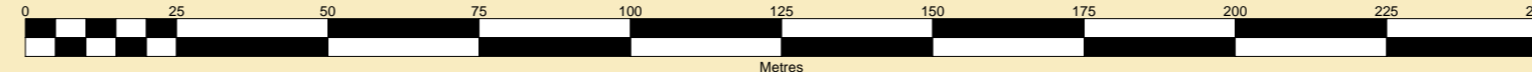
The shore features on this chart are based largely on Ordnance Survey digital mapping data with permission of HMSO. © Crown Copyright 2025. Peel Licence Number 100018033.

FLATS & SANDBANKS

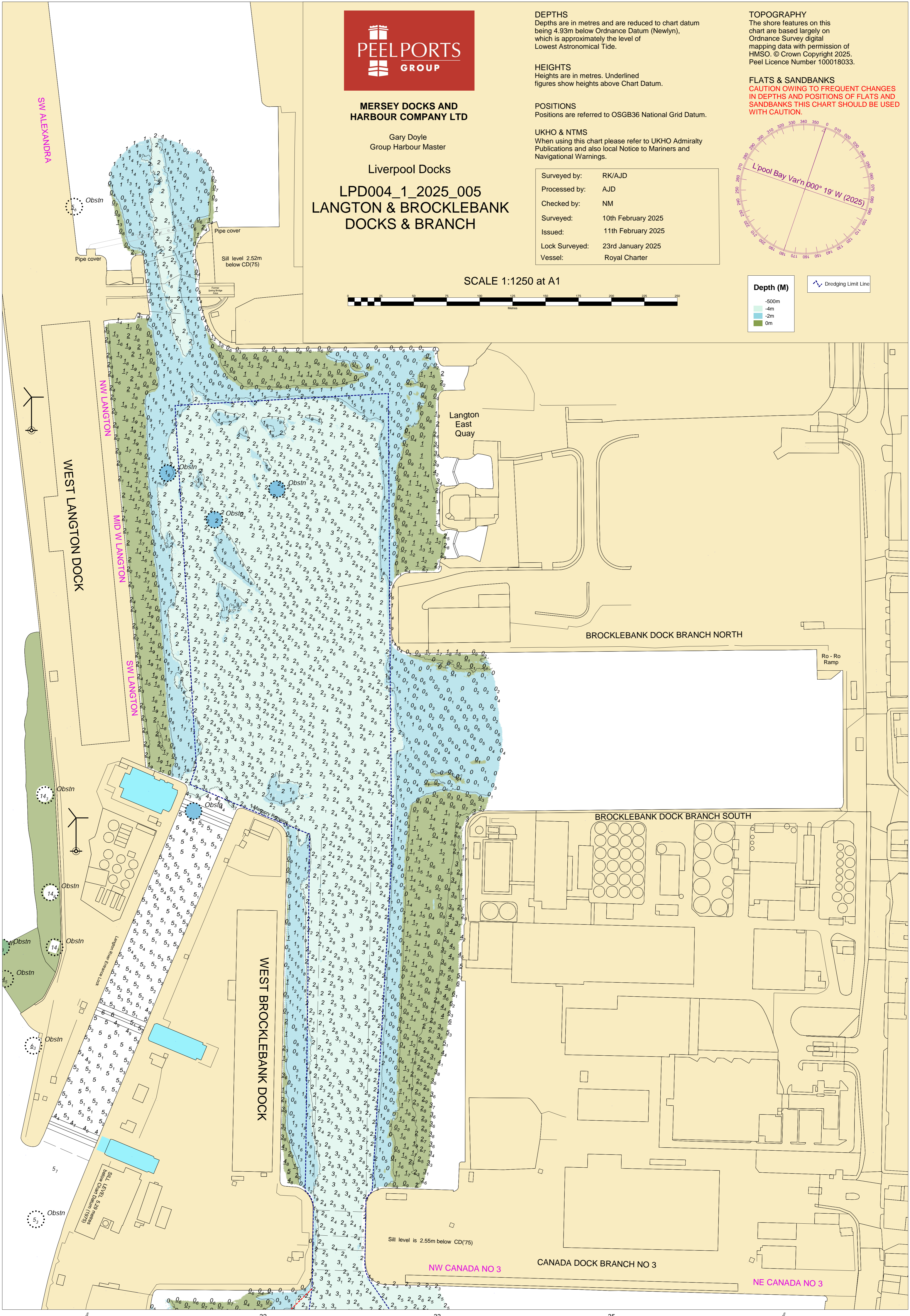
CAUTION OWING TO FREQUENT CHANGES IN DEPTHS AND POSITIONS OF FLATS AND SANDBANKS THIS CHART SHOULD BE USED WITH CAUTION.



SCALE 1:1250 at A1



Dredging Limit Line



SW ALEXANDRA

NW LANGTON

MID W LANGTON

SW LANGTON

WEST BROCKLEBANK DOCK

Langton East Quay

BROCKLEBANK DOCK BRANCH NORTH

BROCKLEBANK DOCK BRANCH SOUTH

CANADA DOCK BRANCH NO 3

NE CANADA NO 3

Sill level is 2.55m below CD(75)

Sill level 2.52m below CD(75)

Pipe cover

Pipe cover

Obstn

Obstn

Obstn

Obstn

Obstn

Obstn

Obstn

Obstn

Langton Quay

Langton Quay

Langton Quay

Langton Quay

Ro - Ro Ramp

(G8) Limerick Quay (CD) 2.5m below CD(75)

(G8) Limerick Quay (CD) 2.5m below CD(75)

(G8) Limerick Quay (CD) 2.5m below CD(75)