



MERSEY DOCKS AND HARBOUR COMPANY LTD

Gary Doyle
Group Harbour Master

Liverpool Docks

LPD004_1_2022_003
LANGTON & BROCKLEBANK
DOCKS & BRANCH

DEPTHS
Depths are in metres and are reduced to chart datum being 4.93m below Ordnance Datum (Newlyn), which is approximately the level of Lowest Astronomical Tide.

HEIGHTS
Heights are in metres. Underlined figures show heights above Chart Datum.

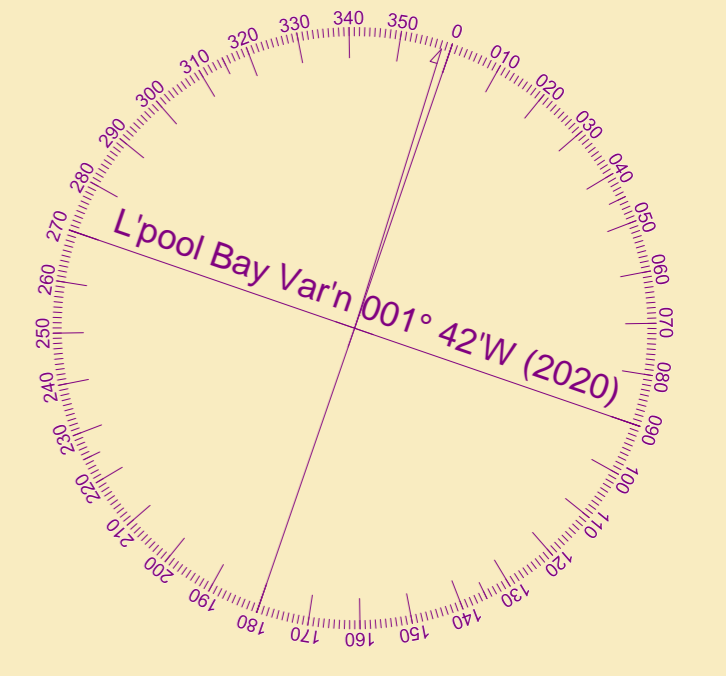
POSITIONS
Positions are referred to OSGB36 National Grid Datum.

UKHO & NTMS
When using this chart please refer to UKHO Admiralty Publications and also local Notice to Mariners and Navigational Warnings.

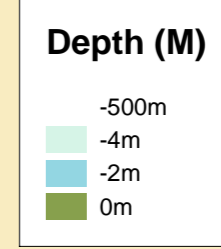
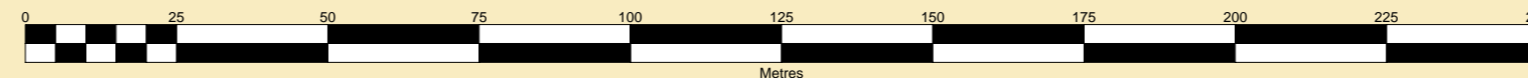
Surveyed by:	WLH
Processed by:	WLH
Checked by:	RCB
Surveyed:	22nd March 2022
Issued:	22nd January 2022
Lock Surveyed:	22nd January 2022
Vessel:	Royal Charter

TOPOGRAPHY
The shore features on this chart are based largely on Ordnance Survey digital mapping data with permission of HMSO. © Crown Copyright 2022. Peel Licence Number 100018033.

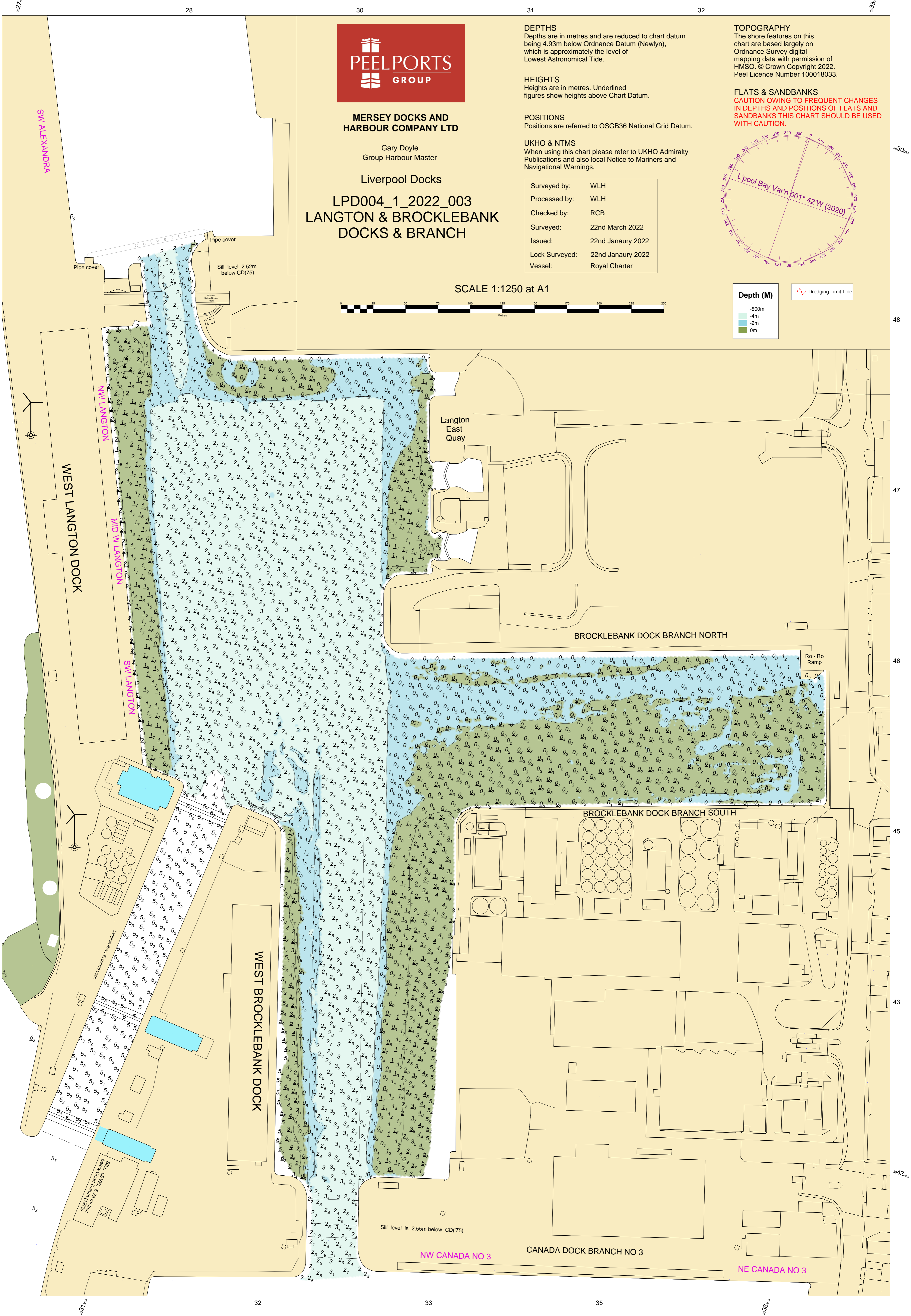
FLATS & SANDBANKS
CAUTION OWING TO FREQUENT CHANGES IN DEPTHS AND POSITIONS OF FLATS AND SANDBANKS THIS CHART SHOULD BE USED WITH CAUTION.



SCALE 1:1250 at A1



Dredging Limit Line



SW ALEXANDRA

WEST LANGTON DOCK

NW LANGTON

MID W LANGTON

SW LANGTON

WEST BROCKLEBANK DOCK

Langton East Quay

BROCKLEBANK DOCK BRANCH NORTH

BROCKLEBANK DOCK BRANCH SOUTH

CANADA DOCK BRANCH NO 3

NW CANADA NO 3

NE CANADA NO 3

Sill level is 2.55m below CD(75)

Sill level is 2.55m below CD(75)

Ro - Ro Ramp