



**MERSEY DOCKS AND HARBOUR COMPANY LTD**

Gary Doyle  
Group Harbour Master

Liverpool Docks

**LPD004\_1\_2023\_001  
LANGTON & BROCKLEBANK  
DOCKS & BRANCH**

**DEPTHS**  
Depths are in metres and are reduced to chart datum being 4.93m below Ordnance Datum (Newlyn), which is approximately the level of Lowest Astronomical Tide.

**HEIGHTS**  
Heights are in metres. Underlined figures show heights above Chart Datum.

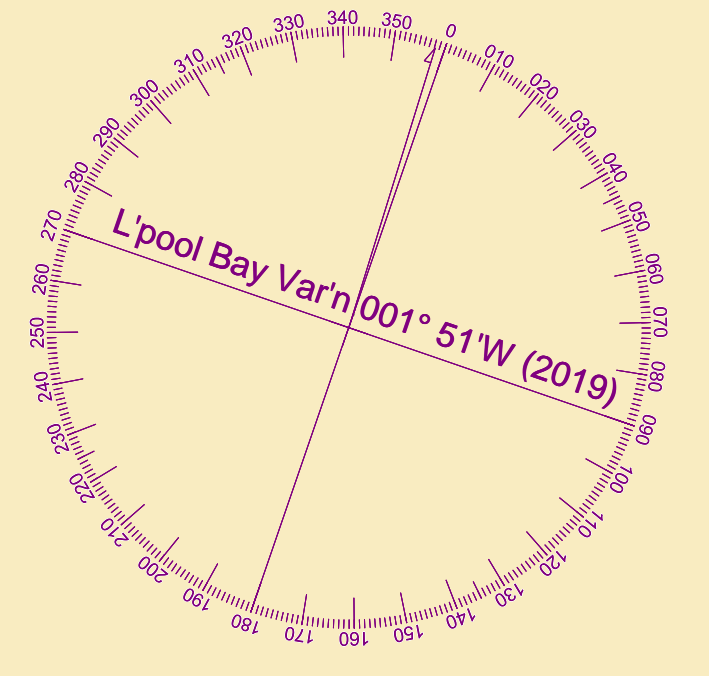
**POSITIONS**  
Positions are referred to OSGB36 National Grid Datum.

**UKHO & NTMS**  
When using this chart please refer to UKHO Admiralty Publications and also local Notice to Mariners and Navigational Warnings.

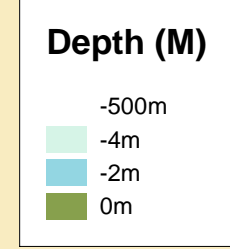
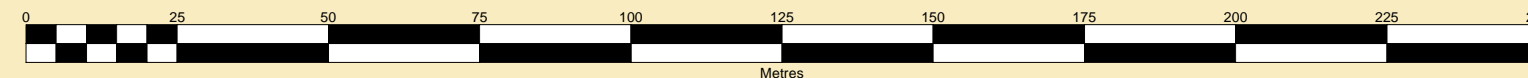
Surveyed by:	FJT
Processed by:	NM
Checked by:	NM
Surveyed:	16th January 2023
Issued:	16th January 2023
Lock Surveyed:	16th January 2023
Vessel:	Royal Charter

**TOPOGRAPHY**  
The shore features on this chart are based largely on Ordnance Survey digital mapping data with permission of HMSO. © Crown Copyright 2023. Peel Licence Number 100018033.

**FLATS & SANDBANKS**  
**CAUTION OWING TO FREQUENT CHANGES IN DEPTHS AND POSITIONS OF FLATS AND SANDBANKS THIS CHART SHOULD BE USED WITH CAUTION.**



SCALE 1:1250 at A1



Dredging Limit Line

