

NOTICE TO MARINERS

No34 – 2023

PORT OF LIVERPOOL

LIVERPOOL BAY GEOPHYSICAL SURVEYS

NOTICE IS HEREBY GIVEN that the *Fugro Venturer* (call sign C6CG3) will be performing geophysical surveys in Liverpool Bay that are within the limits of the Port of Liverpool. These surveys form part of a larger package of surveys of the oil and gas assets in Liverpool Bay.

From 15 March 2023 for six days (subject to weather), the *Fugro Venturer* will survey around the Hamilton offshore platform (area A on the accompanying chart) and wellhead 110/13-4 (area B on the accompanying chart). The coordinates of the vertices of the inner survey areas and outer transition areas (where the vessel will alter course between each survey line) are listed with the accompanying chart.

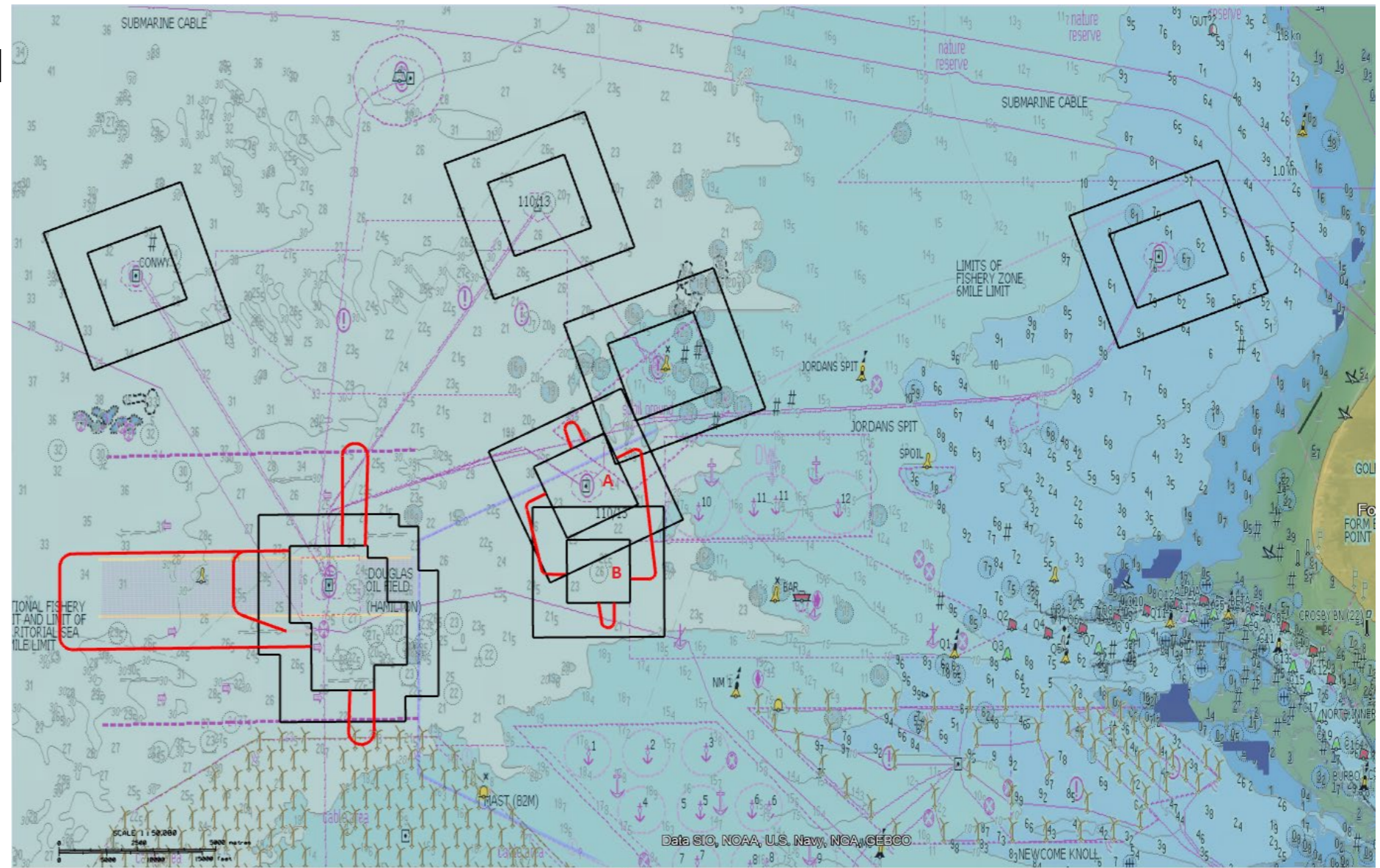
The survey lines for Hamilton (area A) run west–east, whilst those for wellhead 110/13-4 (area B) run east–west. Survey line runs will alternate between Hamilton and wellhead 110/13-4. Furthermore, during the surveys, the *Fugro Venturer* will be towing a 90m long sonar streamer astern, the outboard end of which will be held close to the seabed.

Whilst navigating within the Port and conducting surveys, the *Fugro Venturer* will be under the conduct of an authorized Liverpool pilot and restricted in its ability to manoeuvre. All vessels must maintain a suitable distance from the *Fugro Venturer* and its towed sonar streamer. Crossing and overtaking manoeuvres must be arranged bridge-to-bridge between the *Fugro Venturer* and the other vessel.

Additionally, during the six-day survey period (weather permitting), northern anchorage Nø10 will be closed to all vessels. Mersey VTS will provide updates regarding the availability of this anchorage.

This Notice will remain in force until completion of the surveys in this area of the Port.

Location	Point	WGS84	
		Latitude	Longitude
Hamilton (Area A)	Site Corner 1	53° 34' 16.57399" N	003° 28' 47.02087" W
	Site Corner 2	53° 34' 51.28070" N	003° 26' 43.73086" W
	Site Corner 3	53° 33' 37.89029" N	003° 25' 45.46751" W
	Site Corner 4	53° 33' 02.93478" N	003° 27' 48.55986" W
	Outer Area 1	53° 32' 17.06183" N	003° 28' 17.83191" W
	Outer Area 2	53° 34' 32.56751" N	003° 30' 05.87250" W
	Outer Area 3	53° 35' 37.67690" N	003° 26' 15.00287" W
Outer Area 4	53° 33' 22.11395" N	003° 24' 26.97156" W	
110/13-4 (Area B)	Site Corner 1	53° 33' 01.30358" N	003° 27' 49.29585" W
	Site Corner 2	53° 33' 01.71465" N	003° 25' 59.65532" W
	Site Corner 3	53° 31' 56.79416" N	003° 25' 58.99268" W
	Site Corner 4	53° 31' 56.50716" N	003° 27' 48.79714" W
	Outer Area 1	53° 31' 20.60048" N	003° 28' 47.33398" W
	Outer Area 2	53° 33' 34.91704" N	003° 28' 48.85332" W
	Outer Area 3	53° 33' 35.77293" N	003° 25' 00.58001" W
Outer Area 4	53° 31' 21.45521" N	003° 24' 59.26128" W	



Not to be used for navigation