

# NOTICE TO MARINERS

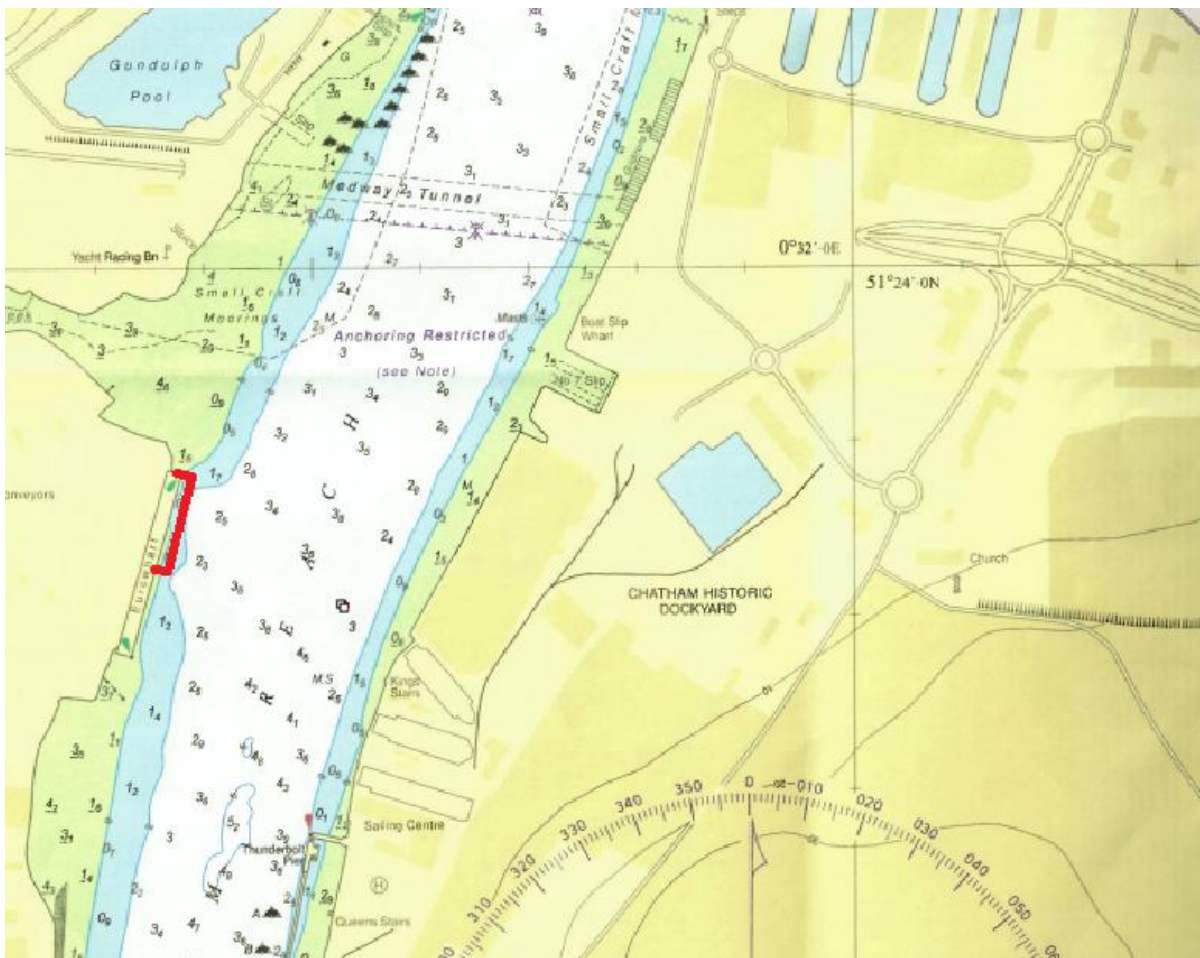


**NtoM 03 - 2026**

## River Medway – Chatham Reach Euro Wharf Quay Works

**NOTICE IS HEREBY GIVEN** that work is due to commence at Euro Wharf on the River Medway as part of the ongoing quay wall replacement project. Work to expose the old quay wall sheet piling will commence on or around 14<sup>th</sup> January 2026 with completion expected by 19<sup>th</sup> January 2026. The tug “Jean T” and barge PFL100 will be positioned off of the berth face at Euro Wharf with a 360° excavator on board, which will be used to remove granular material in front of the sheet piling which will be removed during the next phase. “Jean T” will maintain a listening watch on VHF Channel 74 whilst working and will concentrate activity on the lower end of the quay.

**All vessels are requested to keep clear and reduce speed and wash when passing.**



Admiralty Chart 1835 Refers.

Issued on behalf of Port of Sheerness Ltd, the Statutory Harbour Authority for the River Medway and The Swale  
Telephone calls, VHF radio traffic, CCTV and radar traffic images may be recorded at  
the Peel Ports Group Port Control Centre, Liverpool.

**Jean T**



**Barge PFL 100**



**Marine Operations Department  
Peel Ports London Medway**

Notice Issue: 13<sup>th</sup> January 2026  
Notice Expiry: 20<sup>th</sup> January 2026