



DEPTHS
 Depths are in metres and are reduced to chart datum being 4.93m below Ordnance Datum (Newlyn), which is approximately the level of Lowest Astronomical Tide.

TOPOGRAPHY
 The shore features on this chart are based largely on Ordnance Survey digital mapping data with permission of HMSO. © Crown Copyright 2025. Peel Licence Number 100018033.

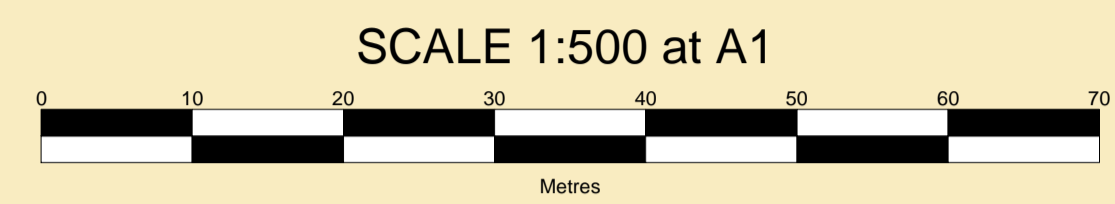
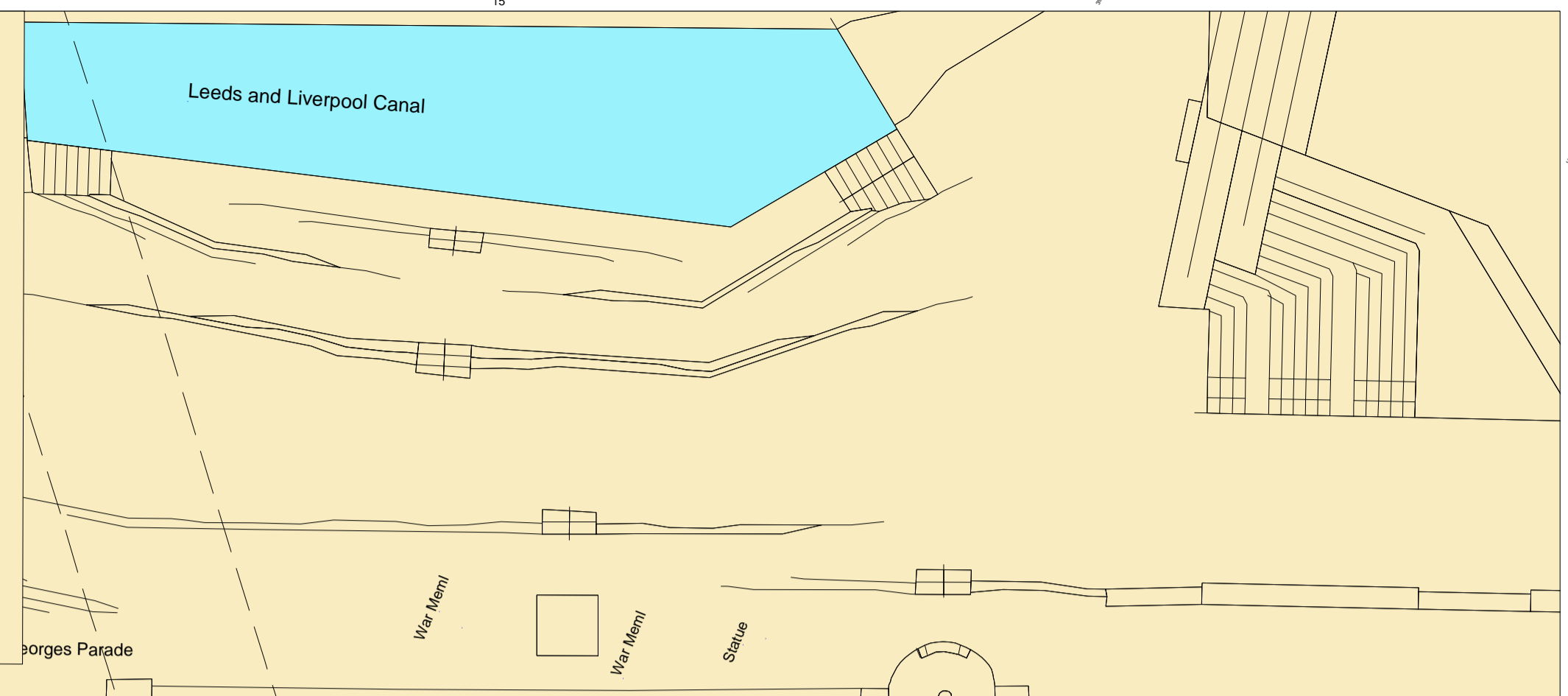
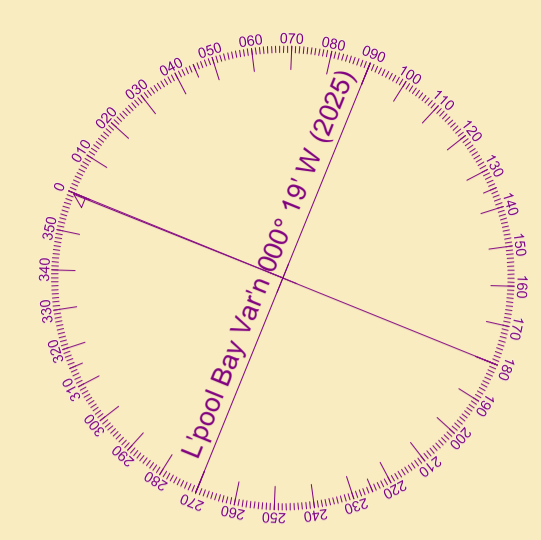
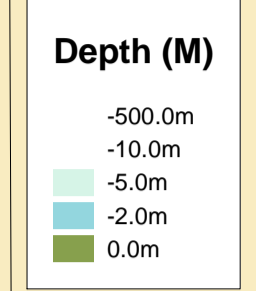
POSITIONS
 Positions are referred to OSGB36 National Grid Datum.

UKHO & NTMS
 When using this chart please refer to UKHO Admiralty Publications and also local Notice to Mariners and Navigational Warnings.

HEIGHTS
 Heights are in metres. Underlined figures show heights above Chart Datum.

FLATS & SANDBANKS
CAUTION OWING TO FREQUENT CHANGES IN DEPTHS AND POSITIONS OF FLATS AND SANDBANKS THIS CHART SHOULD BE USED WITH CAUTION.

Surveyed by: AJD
 Processed by: RK
 Checked by: RK
 Surveyed: 14th February 2025
 Issued: 17th February 2025
 Vessel: Royal Charter



MERSEY DOCKS AND HARBOUR COMPANY LTD
 Gary Doyle
 Group Harbour Master
 River Mersey
 LPR001_8_2025_001
 Mersey Ferries
 Pontoon

