



Clydeport

Scotland's gateway to the world

[peelports.com](https://www.peelports.com)

Peel Ports Group
More Than Ports



Contents

Peel Ports Group	4
Welcome	6
The Irish Sea Hub	8
The Clydeport Network	10
The Port of Greenock	12
King George V Dock	14
Inchgreen Marine Park	18
Rothesay Dock	20
Ardrossan Harbour	21
Hunterson Parc	22
State-of-the-Art facilities	24
Shipping and marine services	25
We can handle anything	26
PortPlus+	28
Skilled teams delivering excellence	30
Ensuring safe and secure operations	31
Our own net zero journey	32
Partner with Clydeport	33

Peel Ports Group

We are the UK's second largest port operator, safely handling 70 million tonnes of cargo each year, around 14% of the total market share.

2,000
employees across the UK and Ireland.

7 ports &
24 terminals.

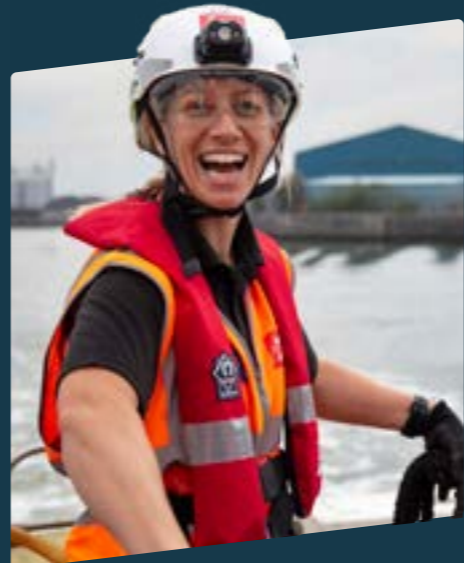
14%
UK market share.

70 million
tonnes of cargo handled each year.

£1.5bn +
invested in the last ten years.

7 statutory harbour authorities.

But we're much more than ports, as a major employer in the regions where we operate, we're creating trade opportunities, supporting jobs and developing skills for the future, all while reducing the impact of our operations on the environment.



As the UK's second largest port operator, we know a thing or two about supply chains and the safe, efficient transporting of goods.

But we do much more than that.

We're a leading enabler of port-centric solutions, which means our customers benefit from a range of in-port and on-demand services.

Peel Ports Group organises its terminals by clusters in different locations, these are:

- Clydeport
- Dublin
- Liverpool
- Manchester Ship Canal
- Heysham
- Great Yarmouth
- London Medway
- Runcorn
- Humber Bulks Terminal
- Ellesmere Port
- Birkenhead



Our Locations

Peel Ports Group

Peel Ports Logistics



Welcome

Clydeport is a vibrant network of ports connecting your business to global markets. Our state-of-the-art facilities enhance supply chain efficiency by offering some of the most strategically advantageous locations on the west coast of Scotland.

Whether you're a small business seeking to expand internationally or a large importer or exporter looking to grow further, we have the experience, capability, and proactive approach to make it happen.

At Clydeport, we believe in building strong, long-term relationships with our customers that add value to their businesses. Regardless of the commodities you handle, we offer the resources and expertise to become a vital link in your supply chain—always going the extra mile to help you achieve your goals.

As the controlling port authority for 450 square miles of the River Clyde, we provide the space, facilities, and expertise to store and process over 15.4 million tonnes of cargo annually while supporting thousands of passenger movements.

Key facts and figures:

450 sq.m

harbour authority of the River Clyde.

Expanded

reefer point capacity.

£25 million

invested into two new state-of-the-art STS cranes.

15.4 million

tonnes cargo handled annually.



King George V Dock



Inchgreen Marine Park



Port of Greenock

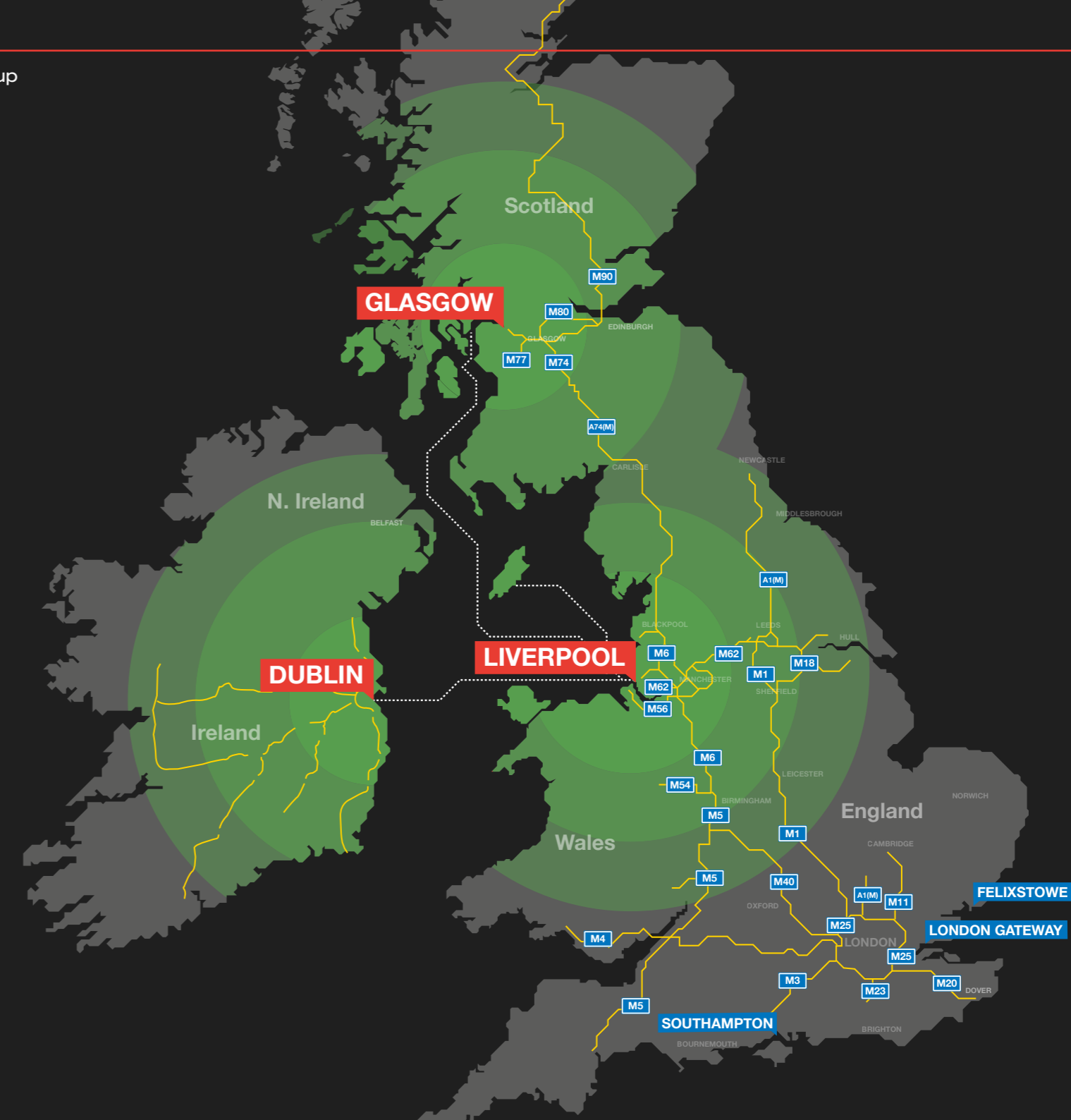


The Irish Sea Hub

Together with the Port of Liverpool, the Manchester Ship Canal, and Dublin, our Clydeport cluster offers unique solutions for container and unitised customers as part of the Irish Sea Hub.

The Irish Sea Hub achieves an 80% laden import-export balance for existing customers, compared to just 50% at south-east-based ports.

- A unique, one-stop-shop for services across the Irish Sea.
- Peel Ports Group serves as a feeder hub for the Irish Sea.
- Connected by BG Freight Line.
- Balancing logistics equipment requirements.
- Global services are called upon and are laden both ways.





The Clydeport Network

The Clydeport network includes:

- Port of Greenock and Cruise Terminal
- Inchgreen Marine Park
- King George V Dock
- Rothesay Dock
- Hunterston Parc
- Ardrossan.

With such diverse and flexible facilities, we can accommodate a wide range of commodities and provide access to services that enable you to plan and manage your supply chain efficiently.

Speak to our expert team about maximising efficiencies in handling the commodities you work with. We are ready to explore the best options and opportunities for your business, developing long-lasting partnerships that align with your objectives.



The Port of Greenock: Home to Scotland's deepest water terminal.

Set within a 16-hectare site, the Port of Greenock has the capacity to handle a throughput of 100,000 TEUs per year. The terminal's 372m-long quay, with a depth of 12.6m, offers extensive storage areas and modern multi-user warehousing, featuring up to 220 reefer points and on-site devanning facilities.

With excellent links to Glasgow, the Central Belt, and two nearby airports with motorway connections via the A8/M8, Greenock is ideally located as a local transit hub.

In 2024, the Port of Greenock proudly unveiled two cutting-edge cranes. These state-of-the-art additions address the growing demands of cargo owners, ensuring shipping companies benefit from reliable access to key import and export hubs across the UK.

Each year, Greenock welcomes over 100 cruises, attracting thousands of passengers. As an ideal port of call, it provides convenient access to Edinburgh, Glasgow, and other popular tourism hotspots along Scotland's west coast.



Key facts and figures:

372^m
quay length.

50 acres
of laydown space.

**Post
Panamax**
container vessels.

12.6^m
draft depth.

25,000^{sq.m}
of warehousing facilities.

220
upgraded reefer points.

Commodities we handle:



Containers



Project Cargo



Energy Products



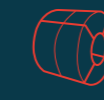
Forest products



Renewables



Cruises



Metals



King George V Dock:

The city-centric gateway to Scotland.

King George V Dock (KGV) is the city-centric gateway to Scotland, located on the banks of the Clyde and just 15 minutes from the bustling centre of Glasgow. As the main river port serving the region, it boasts a 529m-long riverside quay with a depth of 8.5m.

KGV is situated on the doorstep of Scotland's extensive rail and motorway network, enabling fast and efficient distribution of cargo. The port is also only 10 minutes from Glasgow Airport.



Key facts and figures:

Berths:

1586m
total quay length.

Bunkering:

Fuel, diesel/gas oil can be provided at all berths by barge or road tanker.

Crane hire / plant

- 2 Gottwald HMK 260 EG harbour mobiles (100 tonnes at 19m radius).
- 1 multi-docker CH65C material handler – capable of lifting up to 400 tonnes per hour.
- Several wheeled shovels (Volvo 150E).
- Various forklift trucks with up to 21 tonne capacity.
- Tugmaster and Mafi trailers.

Commodities we handle:



Dry Bulk



Energy Products



Agribulks



Metals



Project Cargo



Onshore Wind

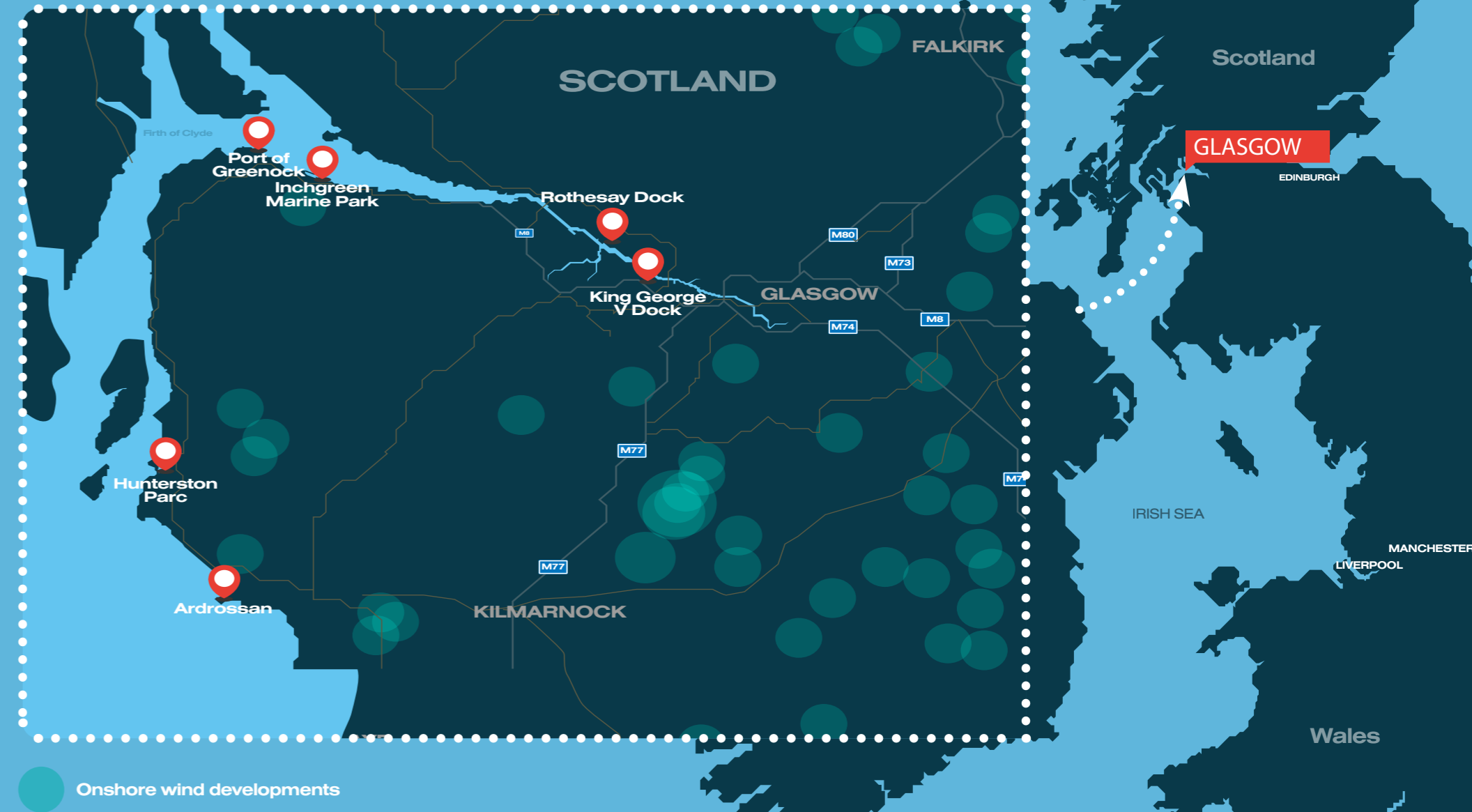
King George V Dock: Scotland's onshore energy hub.

King George V is ideally located to support Scotland's onshore energy sector, with its position along the M74 corridor placing it at the heart of major onshore energy projects. Having handled over 1,200 turbines, KGV has played a crucial role in the development of onshore wind energy, which is vital to achieving net-zero emissions.

As the sector expands, turbine components are growing larger. To meet these challenges, KGV is adapting with expanded laydown space, a new egress road, and 24/7 operational capacity, ensuring it remains a key partner in Scotland's renewable energy transition.



Perfectly positioned to support onshore wind developments



Inchgreen Marine Park: Ready for business.

Situated on the south bank of the River Clyde, Inchgreen Marine Park offers a prime location just 1.8 miles from the Port of Greenock. Our multimodal connections—road, rail, air, and deep water—ensure your supply chain flows seamlessly.

In partnership with Inverclyde Council, we have recently invested £10 million to enhance our facilities and infrastructure. This significant upgrade ensures a modern port experience tailored to meet your needs.

Key facts and figures:

34

acre site.

£10_m +

recent investment.

390_m

quayside length.

8.5_m

draft depth.





Rothesay Dock: Opportunities on the Clyde.

Positioned as the northernmost port on the River Clyde, Rothesay Dock offers excellent facilities for a range of cargo operations. The site features a 3,000m² bulk storage warehouse and 4 acres of quayside storage space, ensuring ample capacity for diverse needs. With 360 metres of quayside and a depth of 6.7 metres, it can accommodate various vessel sizes.

Rothesay Dock is a deep-water facility, capable of handling a wide range of vessels, including larger ships. Equipped with facilities for loading, unloading, and storing cargo, it is an essential part of the region's logistics network.

Given the growing interest in renewable energy, Rothesay Dock has the potential to play a key role in supporting Scotland's transition to green energy. The dock's infrastructure makes it well-suited for handling bulk and project cargo.



Ardrossan Harbour

Set on the North Ayrshire coast in southwestern Scotland, Ardrossan provides daily ferry services with up to nine sailings a day to the Isle of Arran, the largest island in the Firth of Clyde.

These ferry services connect the mainland to the island, supporting commuting, the transport of essential goods, and serving as a key link for the visitor economy.



Hunterston Parc: Innovation in the Blue & Green economy.

Hunterston's vision to become a major industrial facility for the blue and green economies is rapidly becoming an exciting reality.

Leading innovators and developers have committed to creating a unique hub in Ayrshire, on Scotland's west coast, offering promising prospects for the region's economic growth.

- 90% of the 350-acre site is now reserved.
- NPF4 National Planning Status.
- £3.5bn inward investments.
- 5,000 new jobs.
- Skills opportunities for future generations.

Visit www.hunterstonparc.com or scan QR code to find out more.



*Artist impression



State-of-the-Art facilities for every requirement

The Clydeport network can accommodate a wide variety of cargo types, from heavy industrial goods to consumer products, making it a versatile hub for both domestic and international trade.

Clydeport's commitment to providing tailored logistics solutions ensures efficient and reliable service across every sector it serves. With modern infrastructure, flexible operations, and specialised handling capabilities, Clydeport is well-positioned to meet the growing demands of the maritime and logistics industries, ensuring every requirement is met with precision and care.

Shipping and Marine Services

Peel Ports Group's Clydeport is more than just a port—it is a full-service maritime hub designed to meet the complex needs of vessel operators, cargo owners, and shipping lines.

Our comprehensive suite of marine services ensures that vessels calling at our port receive the highest level of care and operational support. From expert pilotage to state-of-the-art towage, our marine services are tailored to guarantee safety, efficiency, and seamless operations.



Pilotage:

Expert navigation for safe port entry.

Towage:

Powerful support for efficient vessel handling.

Mooring Services:

Safe and reliable berthing.

Facilitated Services:

Fuelling your operations.

Vessel Maintenance and Repairs:

Keeping your fleet operational.

Vessel Waste Management and Environmental Services:

Ensuring compliance during docking.

Marine Traffic Control and Vessel Monitoring:

Keeping the Clyde safe and manageable.

Emergency Response and Marine Safety:

Keeping your team and fleet safe.

We can handle anything...

The Clydeport network can accommodate a wide variety of cargo types, from heavy industrial goods to consumer products, making it a versatile hub for both domestic and international trade.

Clydeport's commitment to providing tailored logistics solutions for each customer ensures efficient and reliable service across every sector it serves. With modern infrastructure, flexible operations, and specialised handling capabilities, Clydeport is well-positioned to meet the growing demands of the maritime and logistics industries, ensuring every requirement is met with precision and care.

...here are our 3 specialised areas.



Energy products

Clydeport is at the forefront of supporting the energy industry, offering specialised services for both conventional and renewable energy products. Its strategic location and robust infrastructure provide energy companies with reliable transport and storage solutions to ensure operations run smoothly. By facilitating the movement of components for onshore wind projects, Clydeport is committed to meeting the energy sector's evolving needs. As the world transitions to greener energy, our modern facilities are designed to accommodate the growing demand for sustainable solutions.



Retail

At Clydeport, we understand the importance of efficiency in the retail sector, which is why we offer comprehensive logistics solutions tailored to meet the demands of modern retail supply chains. With seamless transport connections and flexible warehouse spaces, we help retailers optimise inventory management and streamline their distribution networks. Our commitment to reliability and speed makes Clydeport an essential partner for businesses navigating the fast-paced retail market. We take pride in providing solutions that enable retailers to stay ahead in a highly competitive industry.



Bulks

For industries reliant on bulk commodities, Clydeport provides specialised handling and storage solutions that ensure the efficient, safe, and timely movement of goods. Our extensive facilities are equipped to manage a wide range of bulk materials, from agricultural products to construction aggregates, offering scalable solutions for businesses of all sizes. With deep-water access and large quaysides, we facilitate the smooth transfer of goods while minimising downtime. Our experienced team works closely with clients to tailor services to their specific needs, ensuring operations run seamlessly.

PortPlus+

Offered across each of our ports, PortPlus+ highlights what we do beyond exports and imports. Peel Ports Group is more than ports. We can provide solutions and logistics across the entire supply chain.

Keep all of your logistics solutions under one roof, Store, Process, Develop and Move with PortPlus+.

+Store

Safely store and protect your goods with flexible on-site warehousing space and on-demand capacity.



+Process

Let our experts take control of your cargo, with added-value handling and processing solutions.



+Move

Take advantage of our end to end cargo movement services, across road, rail and sea.



+Develop

Utilise our secure port locations with cost efficient and bespoke property options.





Skilled teams delivering excellence

- Robust health & safety culture.
- Specialist employees who are experts in key areas such as marine and cargo lifting and handling operations and NPORS.



Ensuring safe and secure operations

- Security measures: CCTV, 24/7 monitoring and on-site security guards.
- Compliance with ISPS and environmental regulations.



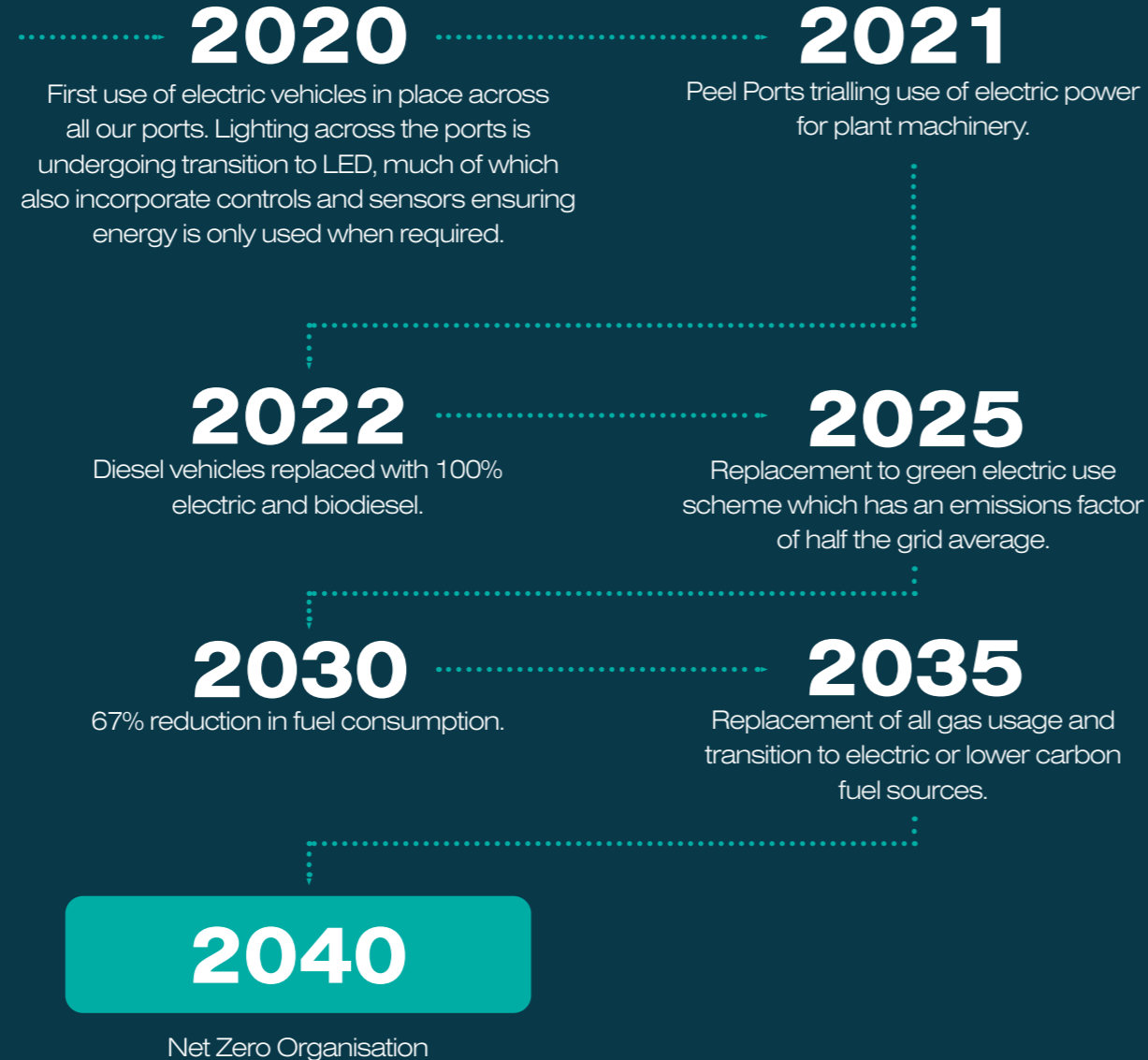
LEADING THE WAY

Our own net zero journey

At Peel Ports Group, sustainability is at the heart of all we do. As one of the UK's largest port operators, and a major employer in the areas where we operate, we are fully aware of the role we need to play in driving a sustainable agenda.

On an environmental front, we've made an industry-leading commitment to become a net zero port operator by 2040, ten years ahead of UK government targets.

Since then, and just in the last three years, we have reduced our operational Scope 1 and 2 emissions by over 40%. Our approach and leadership in this area has been widely recognised by peers with a raft of industry awards and accolades.



Partner with Clydeport

Get in touch to explore how we can support your business growth.
clydeportsales@peelports.com

Clydeport

Peel Ports Group
Clydeport Head Office
16 Robertson Street
Glasgow
G2 8DS

Phone Number - +44 (0)141 221 8733

Head Office

Peel Ports Group
Head Office
Maritime Centre
Liverpool
L21 1LA

Phone Number - +44 (0)151 949 6000

Download
Your digital copy here:

