



MERSEY DOCKS AND HARBOUR COMPANY LTD

Gary Doyle
Group Harbour Master

Liverpool Docks

LPD003_1_2023_001
ALEXANDRA DOCK
AND BRANCHES

DEPTHS

Depths are in metres and are reduced to chart datum being 4.93m below Ordnance Datum (Newlyn), which is approximately the level of Lowest Astronomical Tide.

HEIGHTS

Heights are in metres. Underlined figures show heights above Chart Datum.

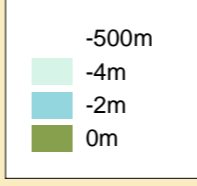
POSITIONS

Positions are referred to OSGB36 National Grid Datum.

UKHO & NTMS

When using this chart please refer to UKHO Admiralty Publications and also local Notice to Mariners and Navigational Warnings.

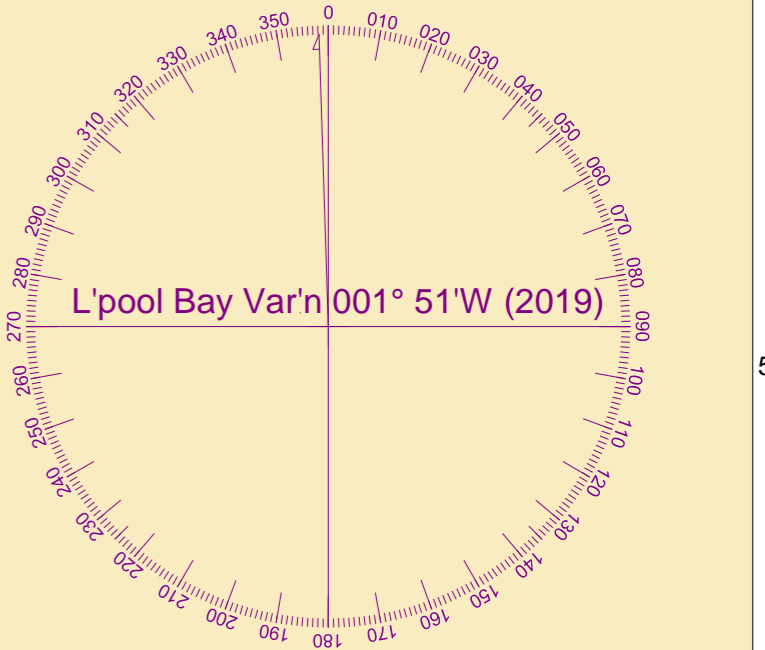
Depth (M)



TOPOGRAPHY

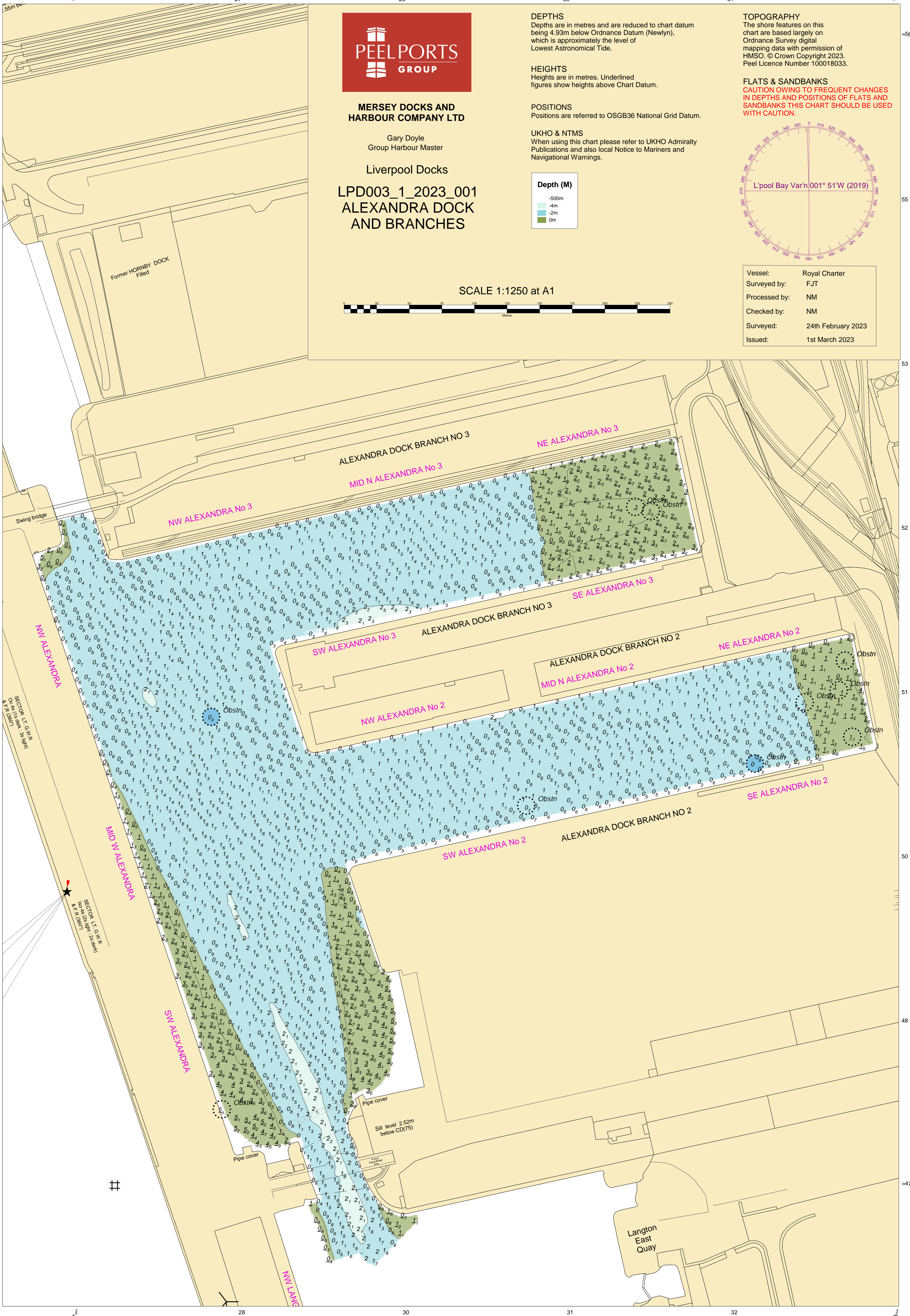
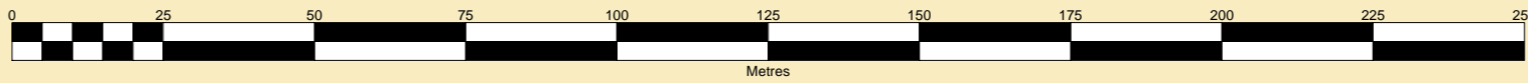
The shore features on this chart are based largely on Ordnance Survey digital mapping data with permission of HMSO. © Crown Copyright 2023. Peel Licence Number 100018033.

FLATS & SANDBANKS
CAUTION OWING TO FREQUENT CHANGES IN DEPTHS AND POSITIONS OF FLATS AND SANDBANKS THIS CHART SHOULD BE USED WITH CAUTION.



Vessel:	Royal Charter
Surveyed by:	FJT
Processed by:	NM
Checked by:	NM
Surveyed:	24th February 2023
Issued:	1st March 2023

SCALE 1:1250 at A1



Former HORNBY DOCK Filled

Swing bridge

SECTOR LIGHT: Green
Sector Light: Red

SECTOR LIGHT: Green
Sector Light: Red

SECTOR LIGHT: Green
Sector Light: Red

SECTOR LIGHT: Green
Sector Light: Red

Pipe cover

Sill level 2.52m below CD(75)

Langton East Quay