

# NOTICE TO MARINERS

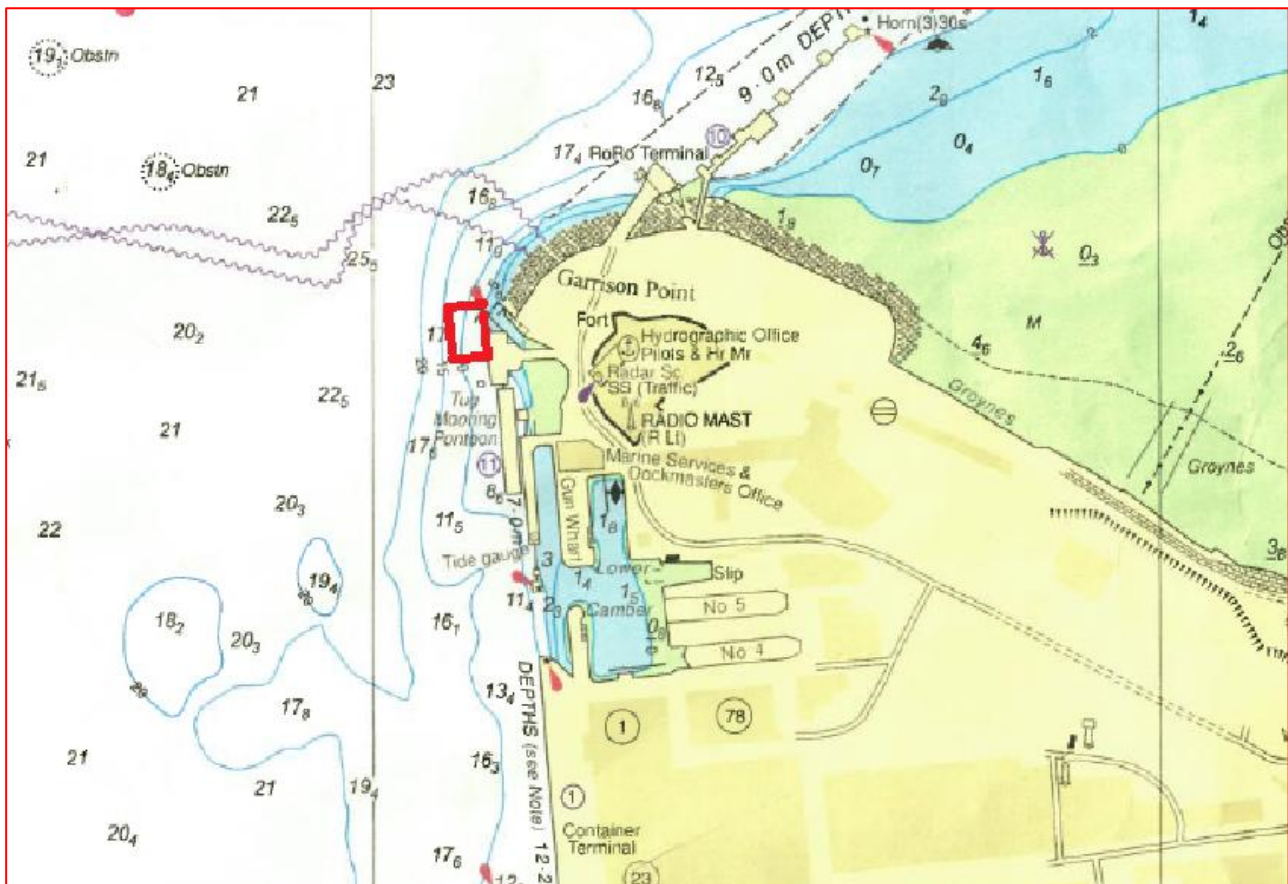


**NtoM 25 - 2025**

## Sheerness Harbour – Downstream SD11 Berth Diving and Heavy Lift Operations

**NOTICE IS HEREBY GIVEN** that work to remove an unsafe turning pile at the downstream end of Sheerness No.11 berth will take place week commencing 14<sup>th</sup> July 2025. The crane barge “GPS Boxer” will be towed into the approximate position shown below on Tuesday 15<sup>th</sup> July at 07:00 where it will remain for 4 – 5 days. Preparatory work, which includes diving operations, will take place prior to the final lifting and removal of the pile. “GPS Boxer” and associated safety craft will maintain a listening watch on VHF Channel 74 at all times and update Medway VTS with any requests for navigational safety broadcasts.

**All vessels passing Sheerness Harbour should navigate with extreme caution, reduce speed and wash and maintain a listening watch on VHF Channel 74 at all times.**



Issued on behalf of Port of Sheerness Ltd, the Statutory Harbour Authority for the River Medway and The Swale  
Telephone calls, VHF radio traffic, CCTV and radar traffic images may be recorded at  
the Peel Ports Group Port Control Centre, Liverpool.

## Crane barge GPS Boxer



Admiralty chart 3683 refers

**Marine Operations Department  
Peel Ports London Medway**

Notice Issued:  
Notice Expiry:

10th July 2025.  
20th July 2025.

Issued on behalf of Port of Sheerness Ltd, the Statutory Harbour Authority for the River Medway and The Swale  
Telephone calls, VHF radio traffic, CCTV and radar traffic images may be recorded at  
the Peel Ports Group Port Control Centre, Liverpool.