

Notice to Mariners N° 26 2026

Great Yarmouth Power Station – Cooling Water (CW) Inlet Tunnel / Forebay Area

NOTICE IS HEREBY GIVEN that RWE will be carrying out Marine and civil works within the Cooling Water inlet forebay at Great Yarmouth Power Station, located behind a temporary isolation plug installed within the inlet tunnel. Works are scheduled to commence 12th June 2026.

The scope of works includes:

- Installation of internal scaffolding within the forebay area
- Installation of a new sluice gate within the CW inlet system

The isolation plug currently in place provides a single barrier protecting personnel working within the forebay from river water ingress.

Programme of Works:

- Scaffolding installation: Approximately 2 days.
- Sluice gate installation: Approximately 10 days (continuous working, including weekends)
- Working hours: Daily between 08:00 and 18:00.

Hazards to Navigation:

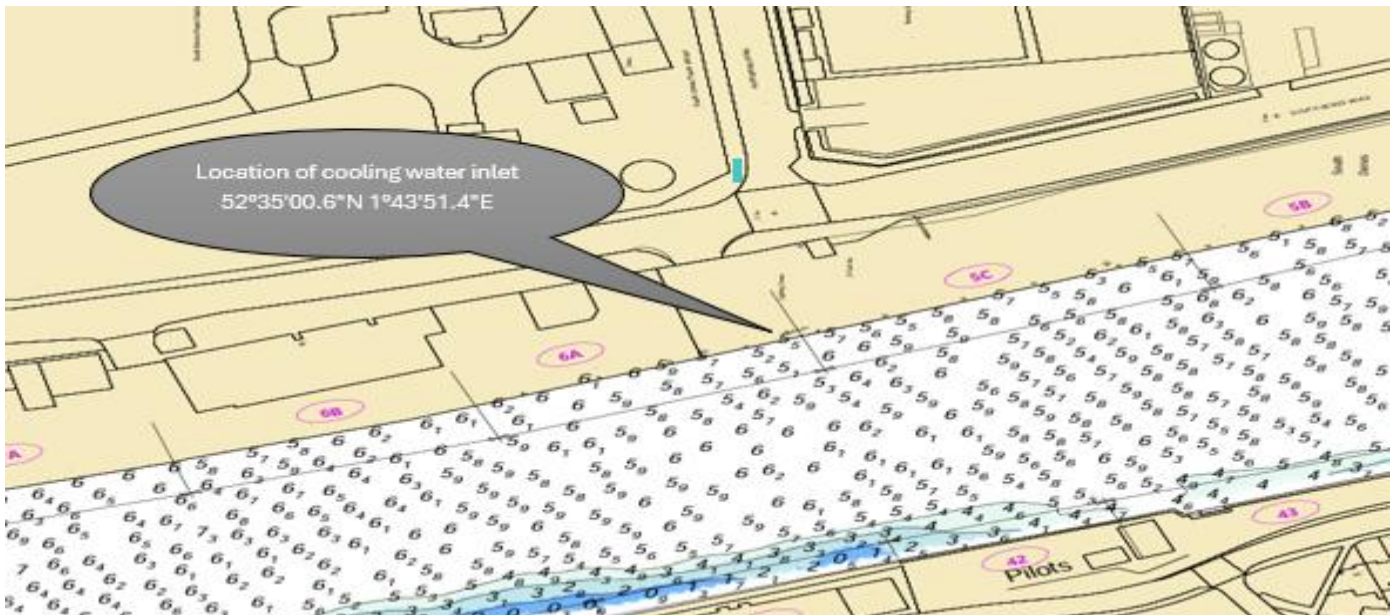
- Vessel movements, particularly mooring activities, propulsion wash, and manoeuvring, may generate localised pressure effects within the waterbody.
- These forces could increase loading on the isolation plug beyond its intended design limits, posing a safety risk to personnel working within the forebay.

Navigation Requirements / Restrictions:

- Restricted mooring in the immediate vicinity of the CW inlet tunnel entrance.
- Avoid unnecessary manoeuvring or use of propulsion adjacent to the work site.
- When in proximity to the work site, vessels should reduce speed as far as reasonably practical. While maintaining safe navigation, steerage, and control, thereby minimising localised water pressure, wash and any other hydrodynamic effects.

Control Measures:

- Local Port Services will advise vessels to pass the area at reduced speed while maintaining safe steerage.
- RWE to maintain a listening watch on VHF Channel 12 and update LPS when personnel are working within the inlet tunnel.



Mariners are reminded to maintain a listening watch on VHF Channel 12 whilst navigating within the Port of Great Yarmouth and to advise 'Yarmouth Radio' of their intention to conduct any manoeuvre within the Port prior to doing so.

For further information please contact the Harbour Office.

**Marine Operations Department
Peel Ports Great Yarmouth**

Notice Issued: 12th June 2026
Notice Expiry: 30th June 2026