

WEST BROCKLEBANK DOCK

Langton River Entrance Lock

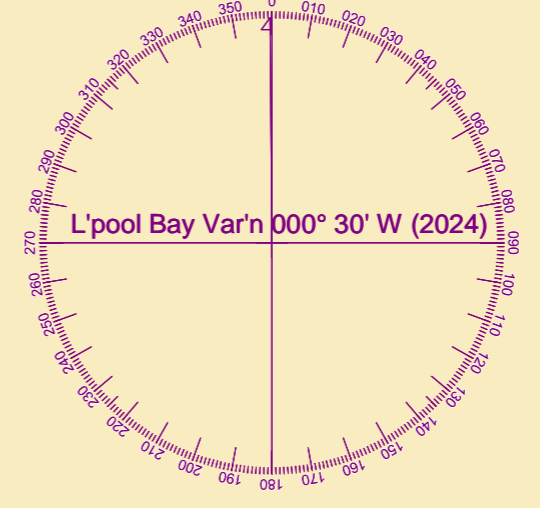


MERSEY DOCKS AND HARBOUR COMPANY LTD

Gary Doyle
Group Harbour Master

Liverpool Docks

**LPD004_2_2024_012
Langton Lock**



DEPTHS
Depths are in metres and are reduced to chart datum being 4.93m below Ordnance Datum (Newlyn), which is approximately the level of Lowest Astronomical Tide.

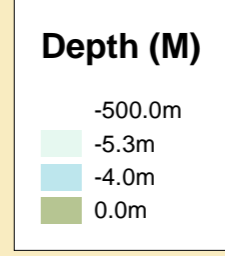
HEIGHTS
Heights are in metres. Underlined figures show heights above Chart Datum.

POSITIONS
Positions are referred to OSGB36 National Grid Datum.

UKHO & NTMS
When using this chart please refer to UKHO Admiralty Publications and also local Notice to Mariners and Navigational Warnings.

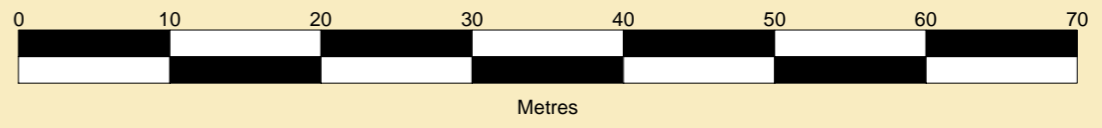
TOPOGRAPHY
The shore features on this chart are based largely on Ordnance Survey digital mapping data with permission of HMSO. © Crown Copyright 2024. Peel Licence Number 100018033.

FLATS & SANDBANKS
CAUTION OWING TO FREQUENT CHANGES IN DEPTHS AND POSITIONS OF FLATS AND SANDBANKS THIS CHART SHOULD BE USED WITH CAUTION.



Surveyed by:	BWL
Processed by:	BWL
Checked by:	WLH
Surveyed:	12th December 2024
Issued:	13th December 2024
Vessel:	F48

SCALE 1:500 at A1



LANGTON RIVER ENTRANCE
Sill level 5.3m below CD('75)

PLEASE CONSULT WITH THE DOCKMASTER FOR LATEST LOCK SOUNDINGS INFORMATION.

(Docking) SS

Mean High Water

MHW

Mud

MLW

FB

Mud

MLW

Mud

MLW

Mud

MLW

Mud

MLW

Mud

MLW

Mud

MLW

Mud

MLW

Mud

MLW

Mud

MLW

Mud

MLW

Mud

MLW

Mud

MLW

Mud

MLW

Mud

MLW

Mud

MLW

Mud

MLW

Mud

MLW

Mud

MLW

Mud

MLW

Mud

MLW

Mud

MLW

Mud

MLW

Mud

MLW

Mud

MLW

Mud

MLW

Mud

MLW

Mud

MLW

Mud

MLW

Mud

MLW

Mud

MLW

Mud

MLW

Mud

MLW

Mud

MLW

Mud

MLW

Mud

MLW

Mud

MLW

Mud

MLW

Mud

MLW

Mud

MLW

Mud

MLW

Mud

MLW

Mud

MLW

Mud

MLW

Mud

MLW

Mud

MLW

Mud

MLW

Mud

MLW

Mud

MLW

Mud

MLW

Mud

MLW

Mud

MLW

Mud

MLW

Mud

MLW

Mud

MLW

Mud

MLW

Mud

MLW

Mud

MLW

Mud

MLW

Mud

MLW

Mud

MLW

Mud

MLW

Mud

MLW

Mud

MLW

Mud

MLW

Mud

MLW

Mud

MLW

Mud

MLW

Mud

MLW

Mud

MLW

Mud

MLW

Mud

MLW

Mud

MLW

Mud

MLW

Mud

MLW

Mud

MLW

Mud

MLW

Mud

MLW

Mud

MLW

Mud

MLW

Mud

MLW

Mud

MLW

Mud

MLW

Mud

MLW

Mud

MLW

Mud

MLW

Mud

MLW

Mud

MLW

Mud

MLW

Mud

MLW

Mud

MLW

Mud

MLW

Mud

MLW

Mud

MLW

Mud

MLW

Mud

MLW

Mud

MLW

Mud

MLW

Mud

MLW

Mud

MLW

Mud

MLW

Mud

MLW

Mud

MLW

Mud

MLW

Mud

MLW

Mud

MLW

Mud

MLW

Mud

MLW

Mud

MLW

Mud

MLW

Mud

MLW

Mud

MLW

Mud

MLW

Mud

MLW

Mud

MLW

Mud

MLW

Mud

MLW

Mud

MLW

Mud

MLW

Mud

MLW

Mud

MLW

Mud

MLW

Mud

MLW

Mud

MLW

Mud

MLW

Mud

MLW

Mud

MLW

Mud

MLW

Mud

MLW

Mud

MLW

Mud

MLW

Mud