

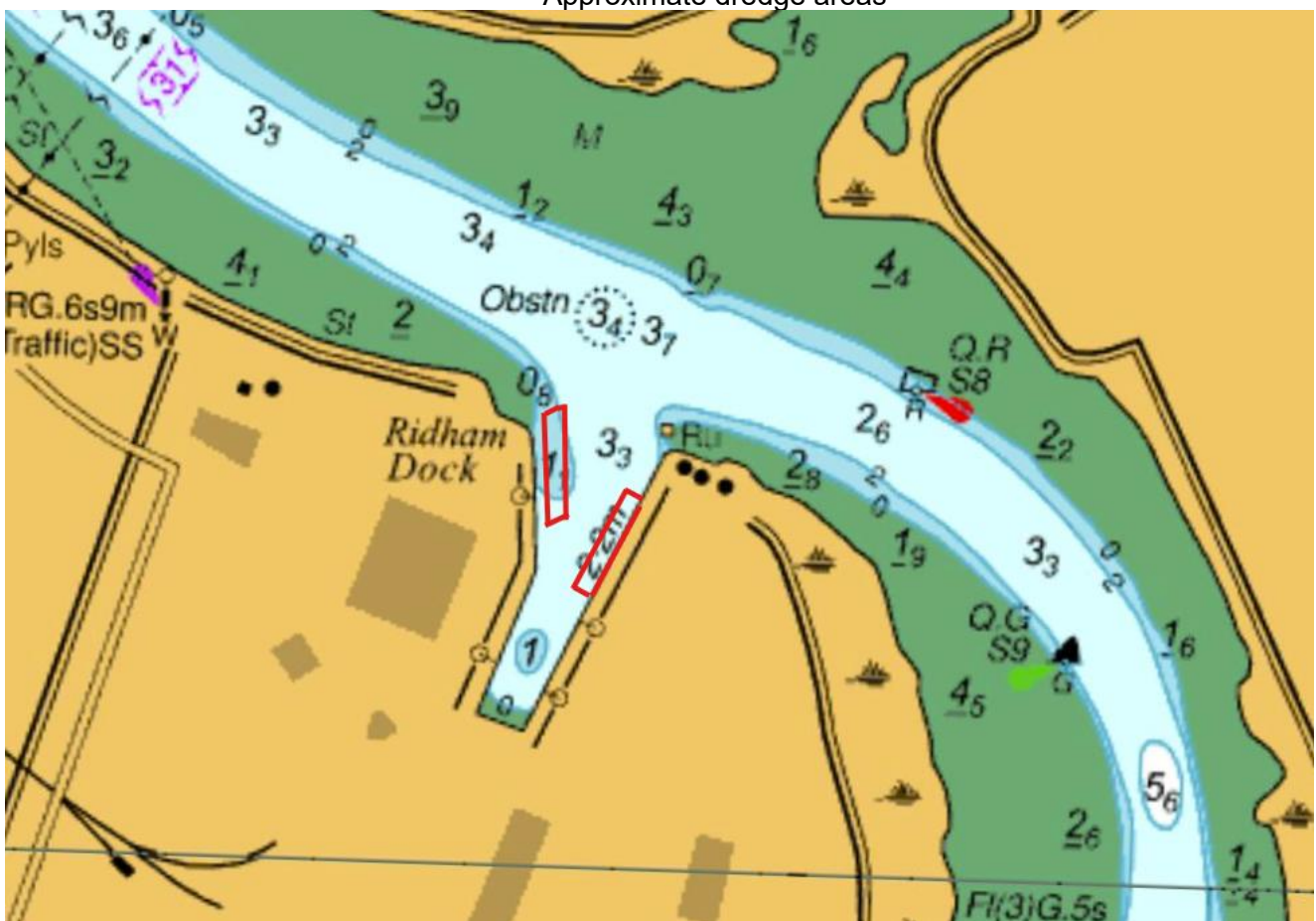
NtoM 29 - 2026

The Swale – Ridham Dock Dredging Operations

Notice is hereby given that Dredging operations are due to take place in Ridham Dock, dredging is expected to take place on Saturday 6th June 2026 and will be carried out over one high water period. Operations will be focussed around the approximate areas of the dock shown below and will be carried out by the water injection dredger 'Aquadelta' who will maintain a listening watch on VHF Channel 74 at all times.

All vessels passing Ridham Dock should navigate with caution, reduce speed and minimise wash accordingly.

Approximate dredge areas



Issued on behalf of Port of Sheerness Ltd, the Statutory Harbour Authority for the River Medway and The Swale
Telephone calls, VHF radio traffic, CCTV and radar traffic images may be recorded at
the Peel Ports Group Port Control Centre, Liverpool.

WID “Aquadelta”



Admiralty Chart: 2482 refers.

Further information may be obtained from Medway VTS on VHF Channel 74, call sign “Medway VTS” or telephone 0151 949 6148 or 0151 949 6650 (**Recorded Lines**)

**Marine Operations Department
Peel Ports London Medway**

Notice Issued 1st June 2026
Notice Expiry 7th June 2026