



**MERSEY DOCKS AND HARBOUR COMPANY LTD**

Gary Doyle  
Group Harbour Master

River Mersey

LPR001\_4\_2022\_006

# Approaches to Alfred River Entrance and Twelve Quays Ro-Ro Terminal

**DEPTHS**  
Depths are in metres and are reduced to chart datum being 4.93m below Ordnance Datum (Newlyn), which is approximately the level of Lowest Astronomical Tide.

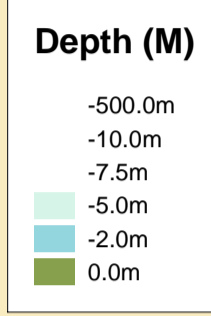
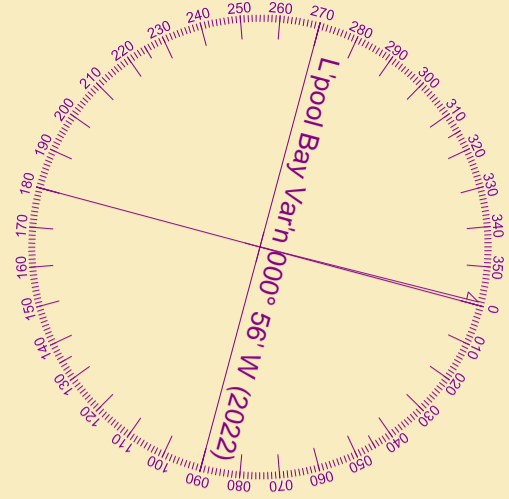
**HEIGHTS**  
Heights are in metres. Underlined figures show heights above Chart Datum.

**POSITIONS**  
Positions are referred to OSGB36 National Grid Datum.

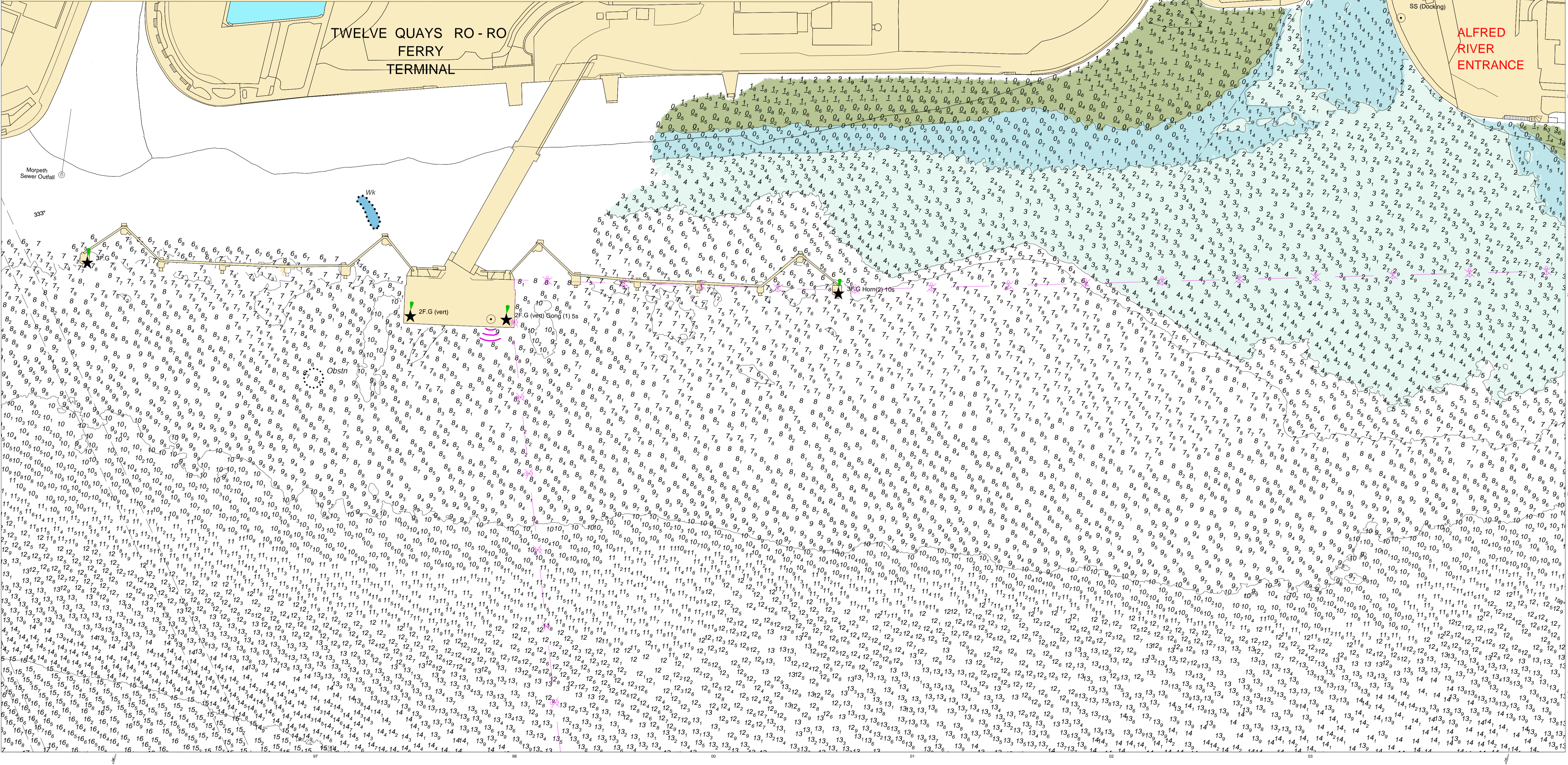
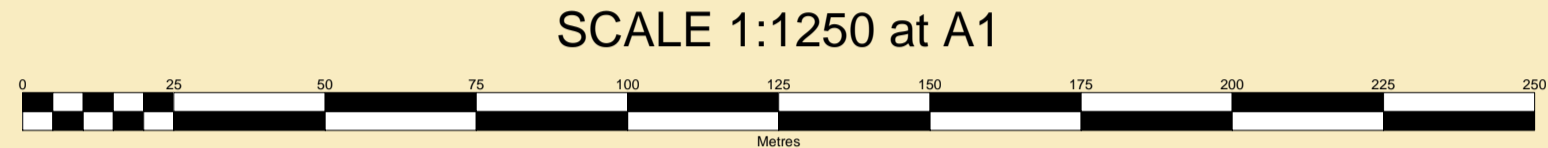
**UKHO & NTMS**  
When using this chart please refer to UKHO Admiralty Publications and also local Notice to Mariners and Navigational Warnings.

**TOPOGRAPHY**  
The shore features on this chart are based largely on Ordnance Survey digital mapping data with permission of HMSO. © Crown Copyright 2022. Peel Licence Number 100018033.

**FLATS & SANDBANKS**  
**CAUTION OWING TO FREQUENT CHANGES IN DEPTHS AND POSITIONS OF FLATS AND SANDBANKS THIS CHART SHOULD BE USED WITH CAUTION.**



Vessel:	Royal Charter
Surveyed by:	WLH
Processed by:	WLH
Checked by:	WLH
Surveyed:	27th July 2022
Issued:	28th July 2022
Alfred Lock Surveyed:	27th July 2022



PLEASE CONSULT WITH THE DOCKMASTER FOR LATEST LOCK SOUNDING INFORMATION

**ALFRED RIVER ENTRANCE**

**TWELVE QUAYS RO-RO FERRY TERMINAL**

**STENA LINE FERRY TERMINAL**

Morpheth Sewer Outfall

Wk

2F.G (vert)

2F.G (vert)

2F.G (vert)

2F.G (vert)

2F.G (vert)

2F.G (vert)

2F.G (vert)

2F.G (vert)

2F.G (vert)

2F.G (vert)

2F.G (vert)

2F.G (vert)

2F.G (vert)

2F.G (vert)

2F.G (vert)