

**MERSEY DOCKS AND HARBOUR COMPANY LTD**

Gary Doyle  
Group Harbour Master

River Mersey

LPR001\_3\_2025\_003  
Langton River  
Entrance

SCALE 1:1250 at A1

**DEPTHS**  
Depths are in metres and are reduced to chart datum being 4.93m below Ordnance Datum (Newlyn), which is approximately the level of Lowest Astronomical Tide.

**HEIGHTS**  
Heights are in metres. Underlined figures show heights above Chart Datum.

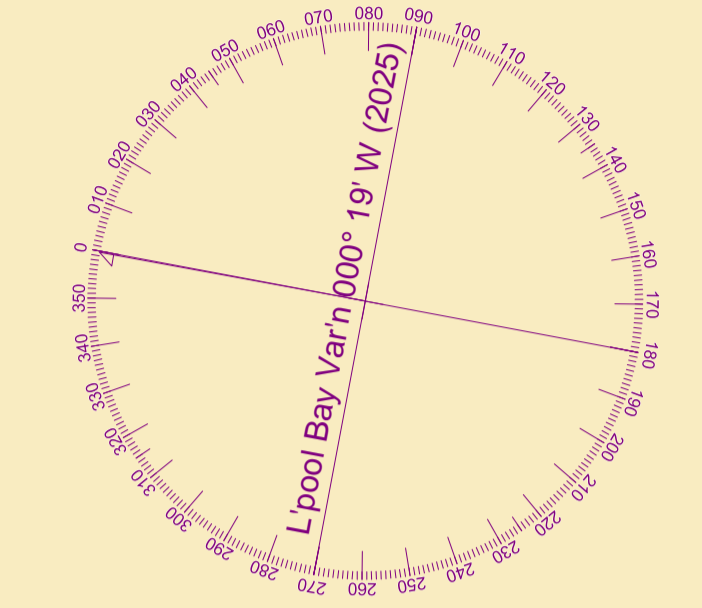
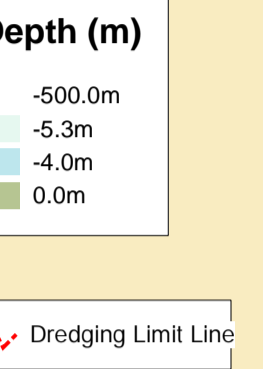
**POSITIONS**  
Positions are referred to OSGB36 National Grid Datum.

**UKHO & NTMS**  
When using this chart please refer to UKHO Admiralty Publications and also local Notice to Mariners and Navigational Warnings.

Vessel: Royal Charter  
Surveyed by: RK  
Processed by: RK  
Checked by: RK  
Surveyed: 17th March 2025  
Issued: 18th March 2025  
Lock Surveyed: 23rd January 2025

**TOPOGRAPHY**  
The shore features on this chart are based largely on Ordnance Survey digital mapping data with permission of HMSO. © Crown Copyright 2025. Peel Licence Number 100018033.

**FLATS & SANDBANKS**  
CAUTION OWING TO FREQUENT CHANGES IN DEPTHS AND POSITIONS OF FLATS AND SANDBANKS THIS CHART SHOULD BE USED WITH CAUTION.



**NOTE OBSTRUCTIONS IN THE VICINITY OF THE LOCK ENTRANCE/BULL NOSE.**  
Bathymetric data shows various historically known long standing seabed structures/artefacts, thought possibly to be part of the original River Entrance construction which are now, in the interest of navigation being shown as obstructions.