



NOTICE TO MARINERS

No 11/21

LOCH LONG – APPROACHES TO GLEN MALLAN JETTY

ESTABLISHMENT OF NEW AIDS TO NAVIGATION

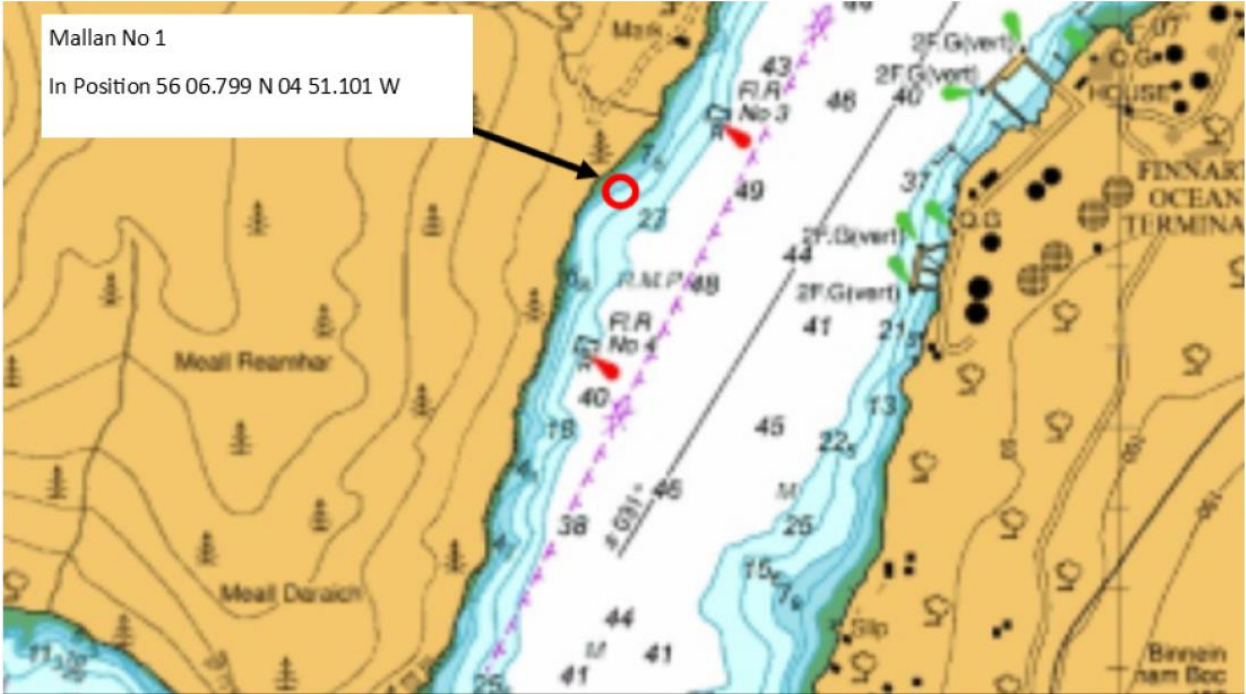
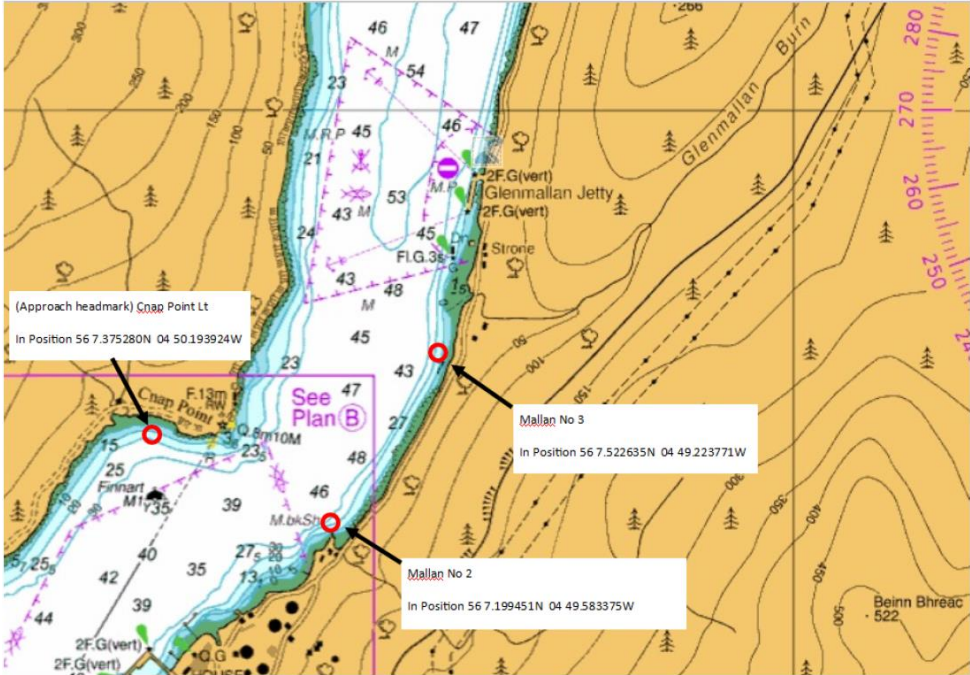
Chart 3746, Plans A and B

Mariners are advised that new Aids to Navigation have been installed in Loch Long in the following locations:

AtoN	Latitude	Longitude	Character
Mallan No 3	56 7.523N	04 49.224W	Fl(2) Y 6s
Mallan No 1	56 6.799N	04 51.101W	Fl(2) Y 6s
(Approach Sector Mark) Cnap Point Lt	56 7.375N	04 50.194W	DIR WRG. With the following sectors: FG 020.5°-022.5°(2°) AI WG 2s 022.5°-023.5°(1°) FW 023.5°-024.5°(1°) AI WR 2s 024.5°-025.5°(1°) FR 025.5°-027.5°(2°)
Mallan No 2	56 7.199N	04 49.583W	Fl(2) Y 6s

The new Aids to Navigation **WILL COME INTO FORCE ON FRIDAY 5TH FEBRUARY 2021**. As part of these works, the existing Finnart Ocean Terminal, Cnap Point Ldg Lts Front and Rear will be disestablished in favour of the new Aids to Navigation at the same time.

The locations of the new Aids to Navigation are illustrated on the following chart extracts:



Mariners should navigate with caution when transiting the area.

Estuary Radio may be contacted on VHF 12 or on ☎ 0151 949 6651.

Charlie Simcox, Senior Manager Marine Operations
 Peel Ports Clydeport, Marine Department,
 Greenock Ocean Terminal, Patrick Street, GREENOCK, PA16 8UU
 Tel: 0151-949 6649
 Email: clydemarinemanagers@peelports.com

NTM: 11/21
 Page: 2 of 2
 Valid from: 28th January 2021
 Expiry Date: 31st December 2021