

NOTICE TO MARINERS – No. 01 2021

PORT OF GREAT YARMOUTH

Bathymetric Survey Works - River Port

MARINERS ARE HEREBY ADVISED that bathymetric survey activity will be undertaken within Great Yarmouth River Port on Monday 11th January and Tuesday 12th January 2021 from Survey Vessel INVESTIGATOR. The area to be surveyed comprises the stretch of river between Berths 12 and 15 as shown in Fig. 2 (overleaf).

Due caution should be exercised when in transit past this location including observance to maintaining safe distance. SV INVESTIGATOR can be contacted on VHF Ch12.

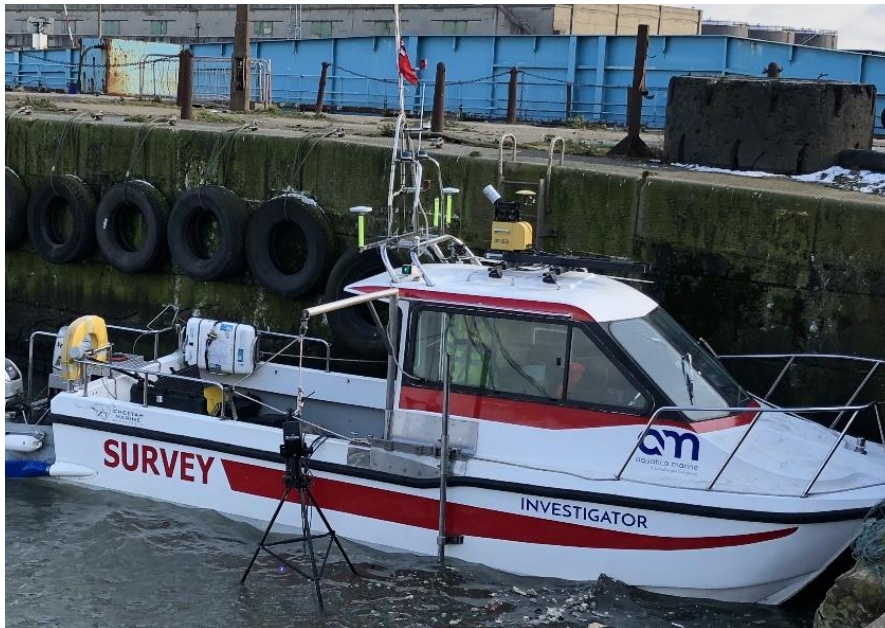


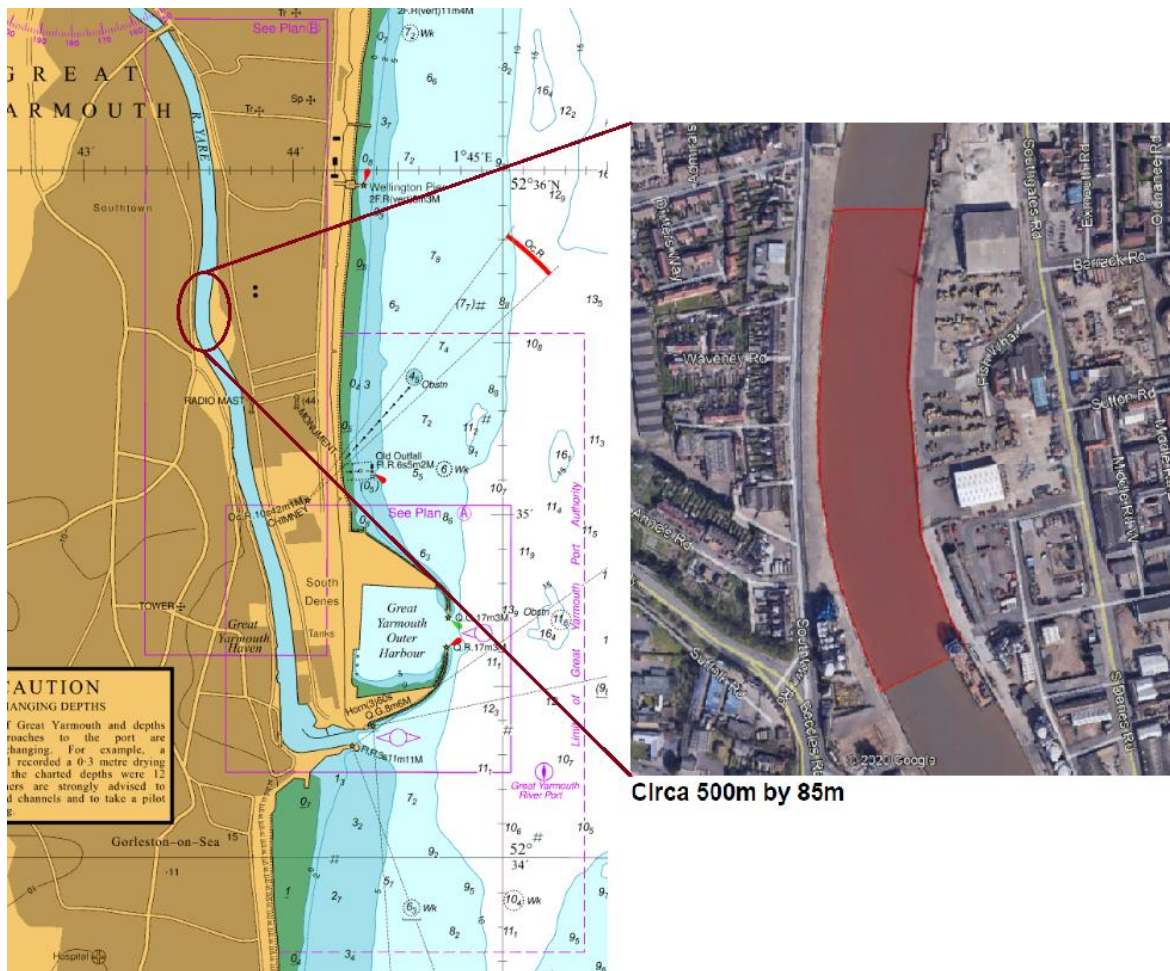
Fig. 1 – Survey Vessel INVESTIGATOR

**Great Yarmouth Port Company
Limited**

Vanguard House
South Beach Parade
NR30 3GY

T : +44 (0)1493 335500
F : +44 (0)1493 857120
E : gyinfo@peelports.co.uk
W : www.peelports.co.uk

NOT TO BE USED FOR NAVIGATION



Circa 500m by 85m

Fig. 2 – Indicative Survey Location

Mariners are reminded to maintain a listening watch on VHF Channel 12 at all times whilst within the Port of Great Yarmouth and to advise ‘Yarmouth Radio’ of their intention to conduct any manoeuvre within the Port prior to doing so. For further information please contact Great Yarmouth LPS on VHF Channel 12 (callsign ‘Yarmouth Radio’) or 01493 335511.

On behalf of **Harbour Master**

8th January 2021

Great Yarmouth Port Company Limited

Vanguard House
South Beach Parade
NR30 3GY

T : +44 (0)1493 335500
F : +44 (0)1493 857120
E : gyinfo@peelports.co.uk
W : www.peelports.co.uk