



NOTICE TO MARINERS

No 07/21

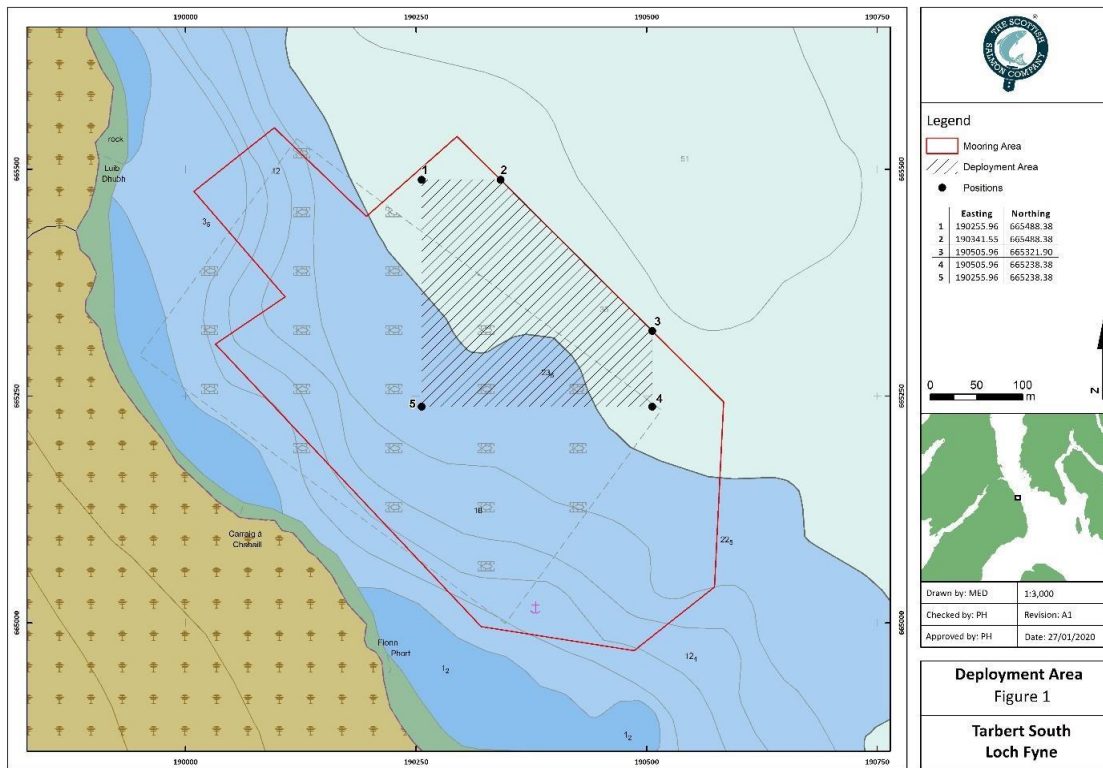
LOCH FYNE – LUIB DHUBH TO FIONN PHORT

HYDROGRAPHIC SURVEY EQUIPMENT

Chart 2131,2381

Mariners are advised that hydrographic survey equipment has been deployed in Loch Fyne as indicated on the following chart extract. The equipment is expected to remain in position until approximately mid-January 2021 or thereabouts)

The deployment location is marked by 1 yellow buoy, marked “survey”, and 1 orange buoy.



Mariners should navigate with caution when transiting this area.

Estuary Radio may be contacted on VHF12 or ☎ 0151 949 6651.

Charlie Simcox, Senior Manager Marine Operations
Peel Ports Clydeport, Marine Department,
Greenock Ocean Terminal, Patrick Street, GREENOCK, PA16 8UU
Tel: 0151-949 6651
Email: clydemarinemanagers@peelports.com

NTM: 07/21
Page: 1 of 1
Valid from: 1st January 2021
Expiry Date: 31st January 2021