



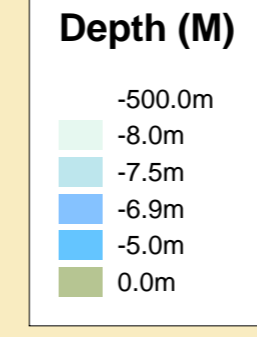
MERSEY DOCKS AND HARBOUR COMPANY LTD
 Captain Susan Cloggie-Holden MNM
 Group Harbour Master

**Liverpool Channel
 Crosby Channel North**

LPC004_5_2026_001

DEPTHS
 Depths are in metres and are reduced to chart datum being 4.93m below Ordnance Datum (Newlyn), which is approximately the level of Lowest Astronomical Tide.

HEIGHTS
 Heights are in metres. Underlined figures show heights above Chart Datum.



Dredge Line

POSITIONS
 Positions are referred to OSGB36 National Grid Datum.

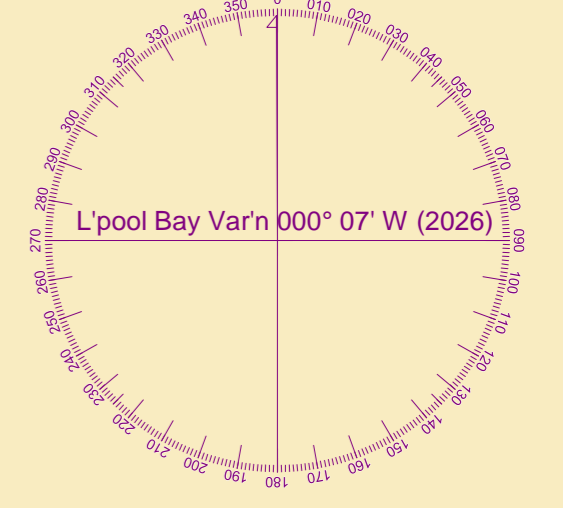
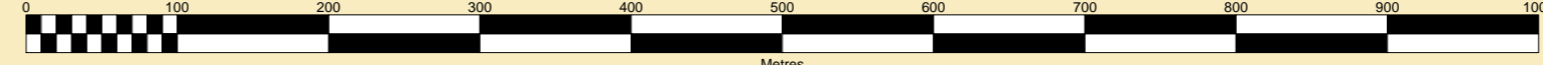
UKHO & NTMS
 When using this chart please refer to UKHO Admiralty Publications and also local Notice to Mariners and Navigational Warnings.

TOPOGRAPHY
 The shore features on this chart are based largely on Ordnance Survey digital mapping data with permission of HMSO. © Crown Copyright 2026. Peel Licence Number 100018033.

FLATS & SANDBANKS
CAUTION OWING TO FREQUENT CHANGES IN DEPTHS AND POSITIONS OF FLATS AND SANDBANKS THIS CHART SHOULD BE USED WITH CAUTION.

Surveyed by: VO
 Processed by: VO
 Checked by: WLH
 Surveyed: 1st May 2026
 Issued: 8th May 2026

SCALE 1:5000 at A1



Taylor's Bank Revetment
 Soundings taken from May 2025

North Tip of Crosby East Training Bank
 Soundings over the Training Bank taken from HS11195 Surveyed 4th August 2011

Crosby West Training Bank
 Soundings over the Training Bank taken from HS11193 Surveyed 3rd August 2011

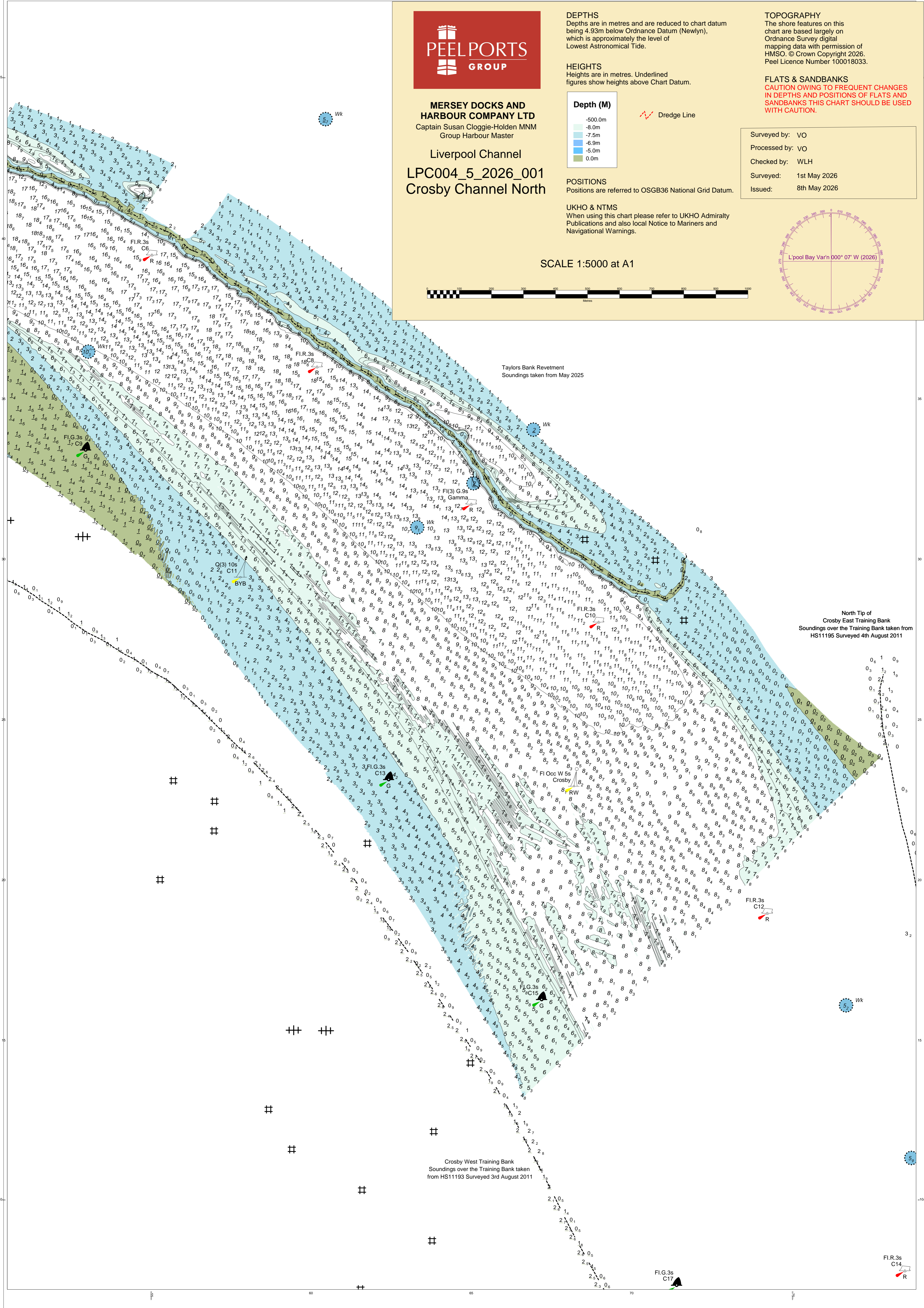


FIG.3s
 C14
 R

FIG.3s
 C17
 G

FIG.3s
 C12
 R

FIG.3s
 C13
 G

FIG.3s
 C11
 G

FIG.3s
 C8
 R

FIG.3s
 C6
 R