



**MERSEY DOCKS AND HARBOUR COMPANY LTD**  
 Captain Susan Cloggie-Holden MNM  
 Group Harbour Master

River Mersey  
 LPR001\_7\_2026\_001  
 Mid-River  
 Dumping Ground

**DEPTHS**  
 Depths are in metres and are reduced to chart datum being 4.93m below Ordnance Datum (Newlyn), which is approximately the level of Lowest Astronomical Tide.

**HEIGHTS**  
 Heights are in metres. Underlined figures show heights above Chart Datum.

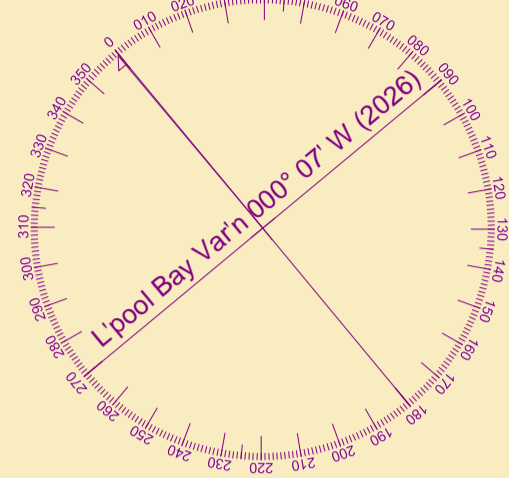
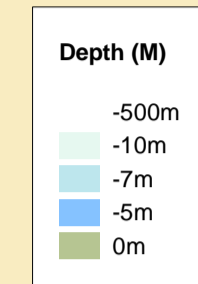
**POSITIONS**  
 Positions are referred to OSGB36 National Grid Datum.

**UKHO & NTMS**  
 When using this chart please refer to UKHO Admiralty Publications and also local Notice to Mariners and Navigational Warnings.

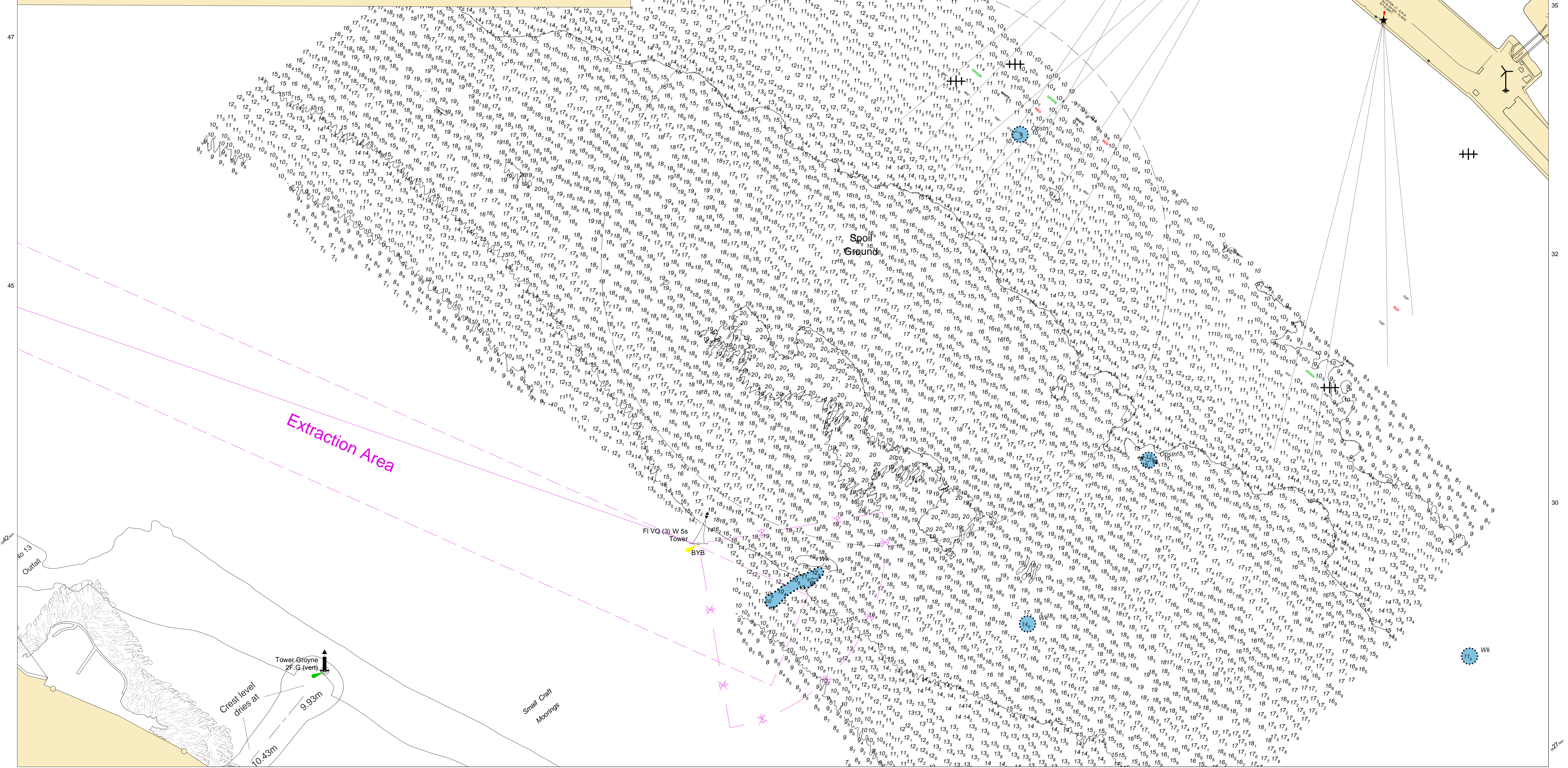
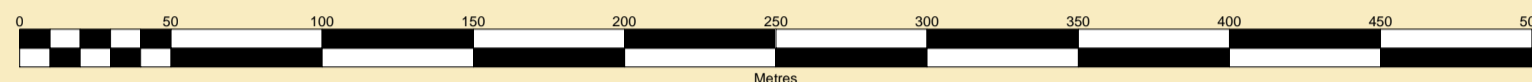
Vessel: Royal Charter  
 Surveyed by: WLH/KH  
 Processed by: KH  
 Checked by: WLH  
 Surveyed: 13th April 2026  
 Issued: 14th April 2026

**TOPOGRAPHY**  
 The shore features on this chart are based largely on Ordnance Survey digital mapping data with permission of HMSO. © Crown Copyright 2026. Peel Licence Number 100018033.

**FLATS & SANDBANKS**  
**CAUTION OWING TO FREQUENT CHANGES IN DEPTHS AND POSITIONS OF FLATS AND SANDBANKS THIS CHART SHOULD BE USED WITH CAUTION.**



SCALE 1:2500 at A1



**NOTE OBSTRUCTIONS IN THE VICINITY OF THE LOCK ENTRANCE BULLDOZE**  
 Surveys in this area were conducted in 2018 and 2020. It is possible that there may be obstructions in the area which were not recorded in the original survey. Mariners should be aware of this and exercise caution when navigating through the area.

47

45

No 13  
 Outfall

15

17

20

22

27

30

32

35

32

30

27