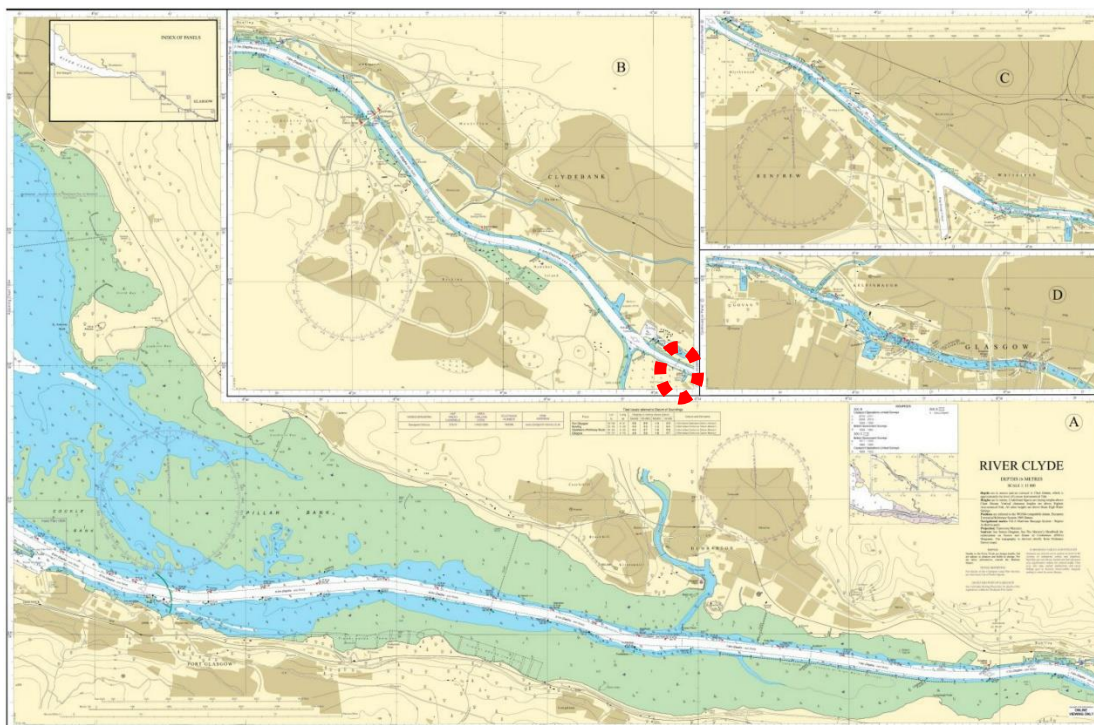
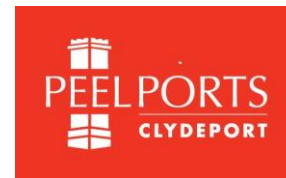


BERTH DATA SHEET

LOBNITZ - GLASGOW



PARTICULARS/BASIC INFORMATION

Admiralty Chart No.	2007 Plan C	Survey Drawing No	HM-1012-1
Min. Depth Alongside	Refer Survey Drawing	Fendering	None
Quay Design	Solid concrete wharf	Avg Water Density	1006 kg/m ³
Latitude	55°53.28'N	Longitude	004°23.60'W
Quay length overall	94m	Eastings/Northings	
No of berths	2	SWL Bollards	Untested
Max vessel LOA	91m (east) 96m (west)	Avg bollard spacing	Random bollard spacing
Max vessel beam	Nil	Line of the berth	210°/030°
Air Draught restrictions	Erskine Bridge**	Quayside SWL	
ISPS Status		Height of cope edge*	5.15m

*from Chart Datum

** up to 49.8m from MHWS unrestricted, up to 53.3m from MHWS 3 months' notice

QUAYSIDE FACILITIES – BY PRIOR ARRANGEMENT

Fresh Water	Yes	Shore Power	No
Port Waste	No	Cranes	No

BERTH DATA SHEET

LOBNITZ - GLASGOW



TIDAL INFORMATION – BASED ON

HAT		MHWS	4.7m
MHWN	4.1m	MLWN	1.6m
MLWS	0.8m	LAT	
Comments			

BERTH OPERATOR

NAME	CONTACT DETAILS
------	-----------------

COMMENTS:

This berth is NOT IN COMMERCIAL USE

There are a number of hazards including it lies at right angles to the general run of the river, the narrowness of the river at this point (less than 100m) and submerged piles to the east of the berth.

Vessels only berth heading south

Consult Peelports Clydeport Towage Matrix for towage requirements.