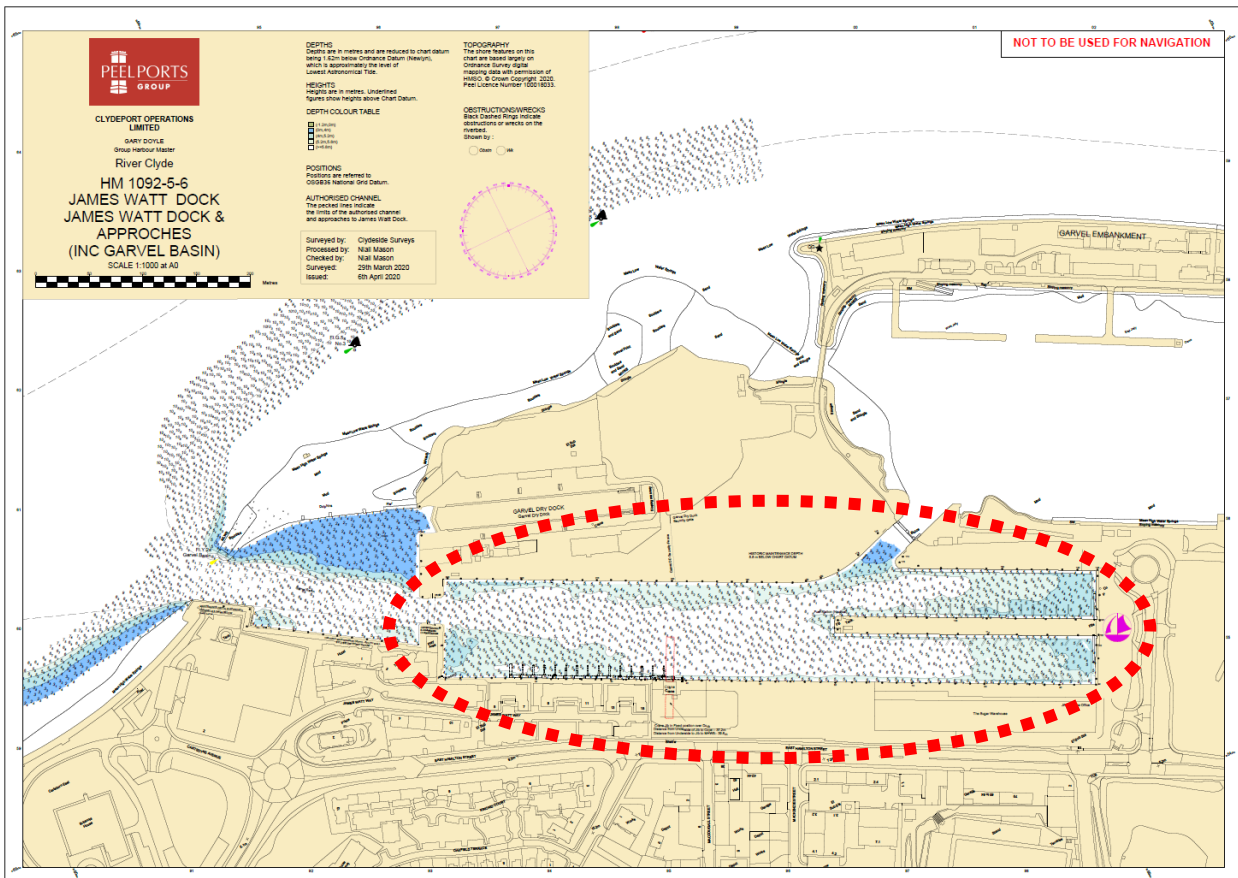
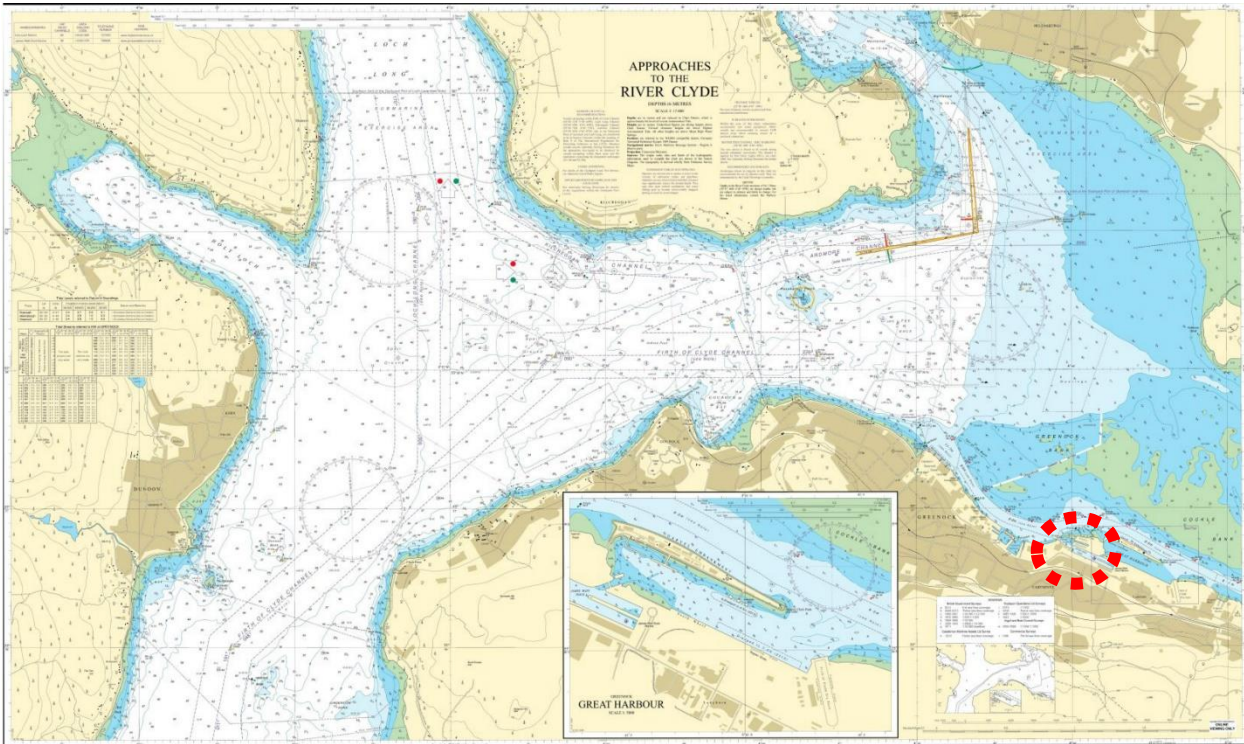


BERTH DATA SHEET

JAMES WATT DOCK - GREENOCK



BERTH DATA SHEET

JAMES WATT DOCK - GREENOCK



PARTICULARS/BASIC INFORMATION

Admiralty Chart No.	1994	Survey Drawing No	HM-1092-5
Min. Depth Alongside	Refer Survey Drawing	Fendering	None
Quay Design	Solid stone wall	Avg Water Density	1018.3 kg/m ³
Latitude	55°56.70'N	Longitude	004°43.90'W
Quay length overall	340m (north wall)	Eastings/Northings	391852, 6201312
Dock entrance width	22.5m (reduced by fendering)	SWL Bollards	Unknown
Max vessel LOA	Beam dependent	Avg bollard spacing	15m
Max vessel beam	20m	Line of the berth	114°/294°
Air Draught restrictions	Crane – see comments	Quayside SWL	
ISPS Status	Compliant	Height of cope edge*	5.83m

*from Chart Datum

QUAYSIDE FACILITIES – BY PRIOR ARRANGEMENT

Fresh Water	Yes	Shore Power	No
Port Waste	Yes	Cranes	n/a

TIDAL INFORMATION – BASED ON GREENOCK

HAT	4.5m	MHWS	3.4m
MHWN	3.0m	MLWN	1.0m
MLWS	0.3m	LAT	-0.3m
Comments			

BERTH OPERATOR

NAME	James Watt Dock Marina	CONTACT DETAILS	01475 729838 07710 611117 VHF CH.80
------	------------------------	-----------------	---

NAME	Dales Marine operate the berth adjacent to the Dry Dock facility	CONTACT DETAILS	01475 725372
------	--	-----------------	--------------

COMMENTS:

Historical crane 39.6m above MWHS (not in use) located on Southern wall of dock