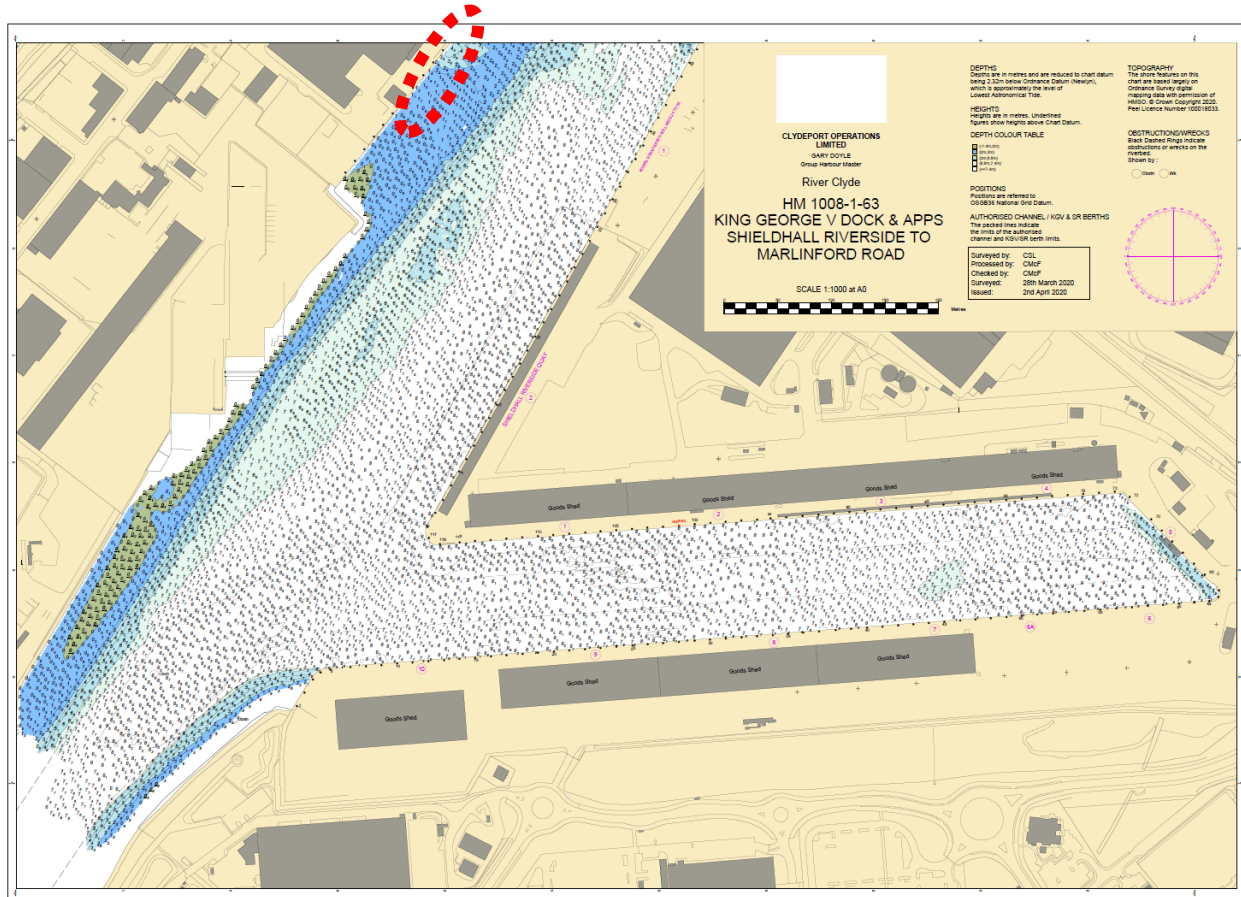
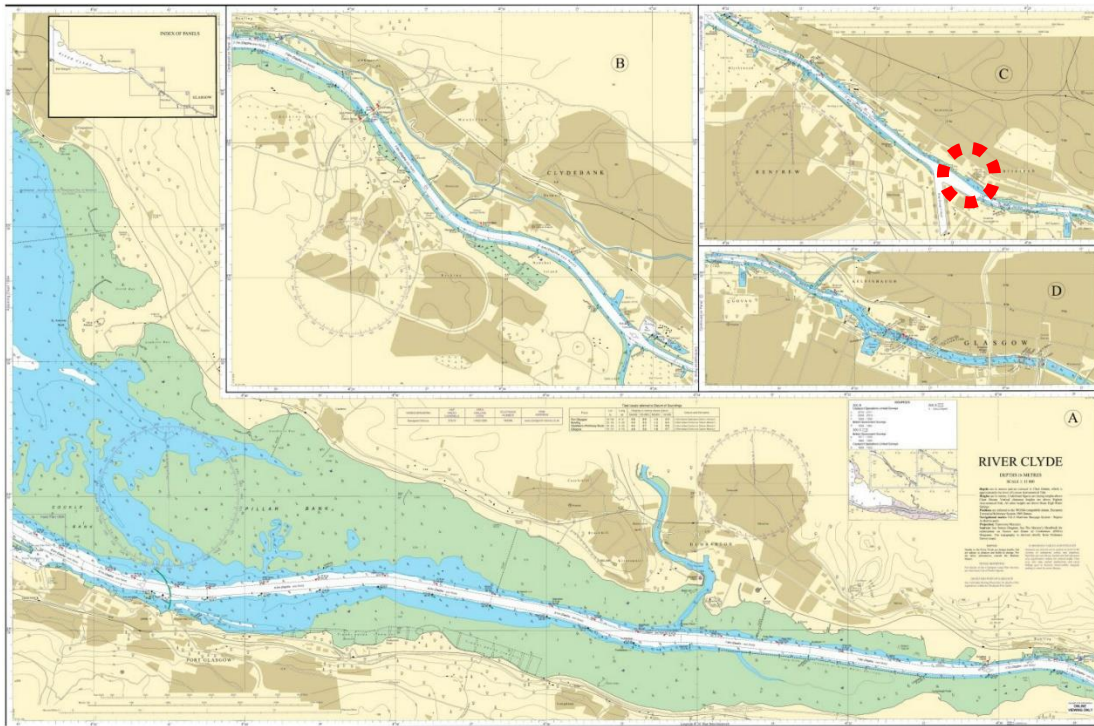


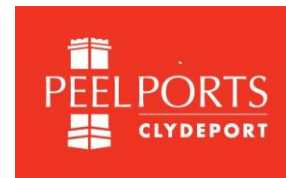
# BERTH DATA SHEET

## DIESEL WHARF - GLASGOW



# BERTH DATA SHEET

## DIESEL WHARF - GLASGOW



### PARTICULARS/BASIC INFORMATION

Admiralty Chart No.	2007 Plan C	Survey Drawing No	HM-1007-1
Min. Depth Alongside	Refer Survey Drawing	Fendering	None
Quay Design	Solid concrete wharf	Avg Water Density	1005.5 kg/m <sup>3</sup>
Latitude	55°52.31'N	Longitude	004°20.69'W
Quay length overall	140m	Eastings/Northings	415852, 6192640
No of berths	1	SWL Bollards	Non tested
Max vessel LOA	140m	Avg bollard spacing	35m
Max vessel beam	No restriction	Line of the berth	118°/298°
Air Draught restrictions	Erskine Bridge**	Quayside SWL	
ISPS Status	Compliant	Height of cope edge*	7.07m

\*from Chart Datum

\*\* up to 49.8m from MHWS unrestricted, up to 53.3m from MHWS 3 months' notice

### QUAYSIDE FACILITIES – BY PRIOR ARRANGEMENT

Fresh Water	No	Shore Power	No
Port Waste	On request	Cranes	Cargo loaders

### TIDAL INFORMATION – BASED ON

HAT		MHWS	4.7m
MHWN	4.1m	MLWN	1.6m
MLWS	0.8m	LAT	
Comments			

### BERTH OPERATOR

NAME	EMR	CONTACT DETAILS	0141 954 9371
------	-----	-----------------	---------------

### COMMENTS:

This berth is used for export of scrap metal.

Shallow patches to the west of the berth.