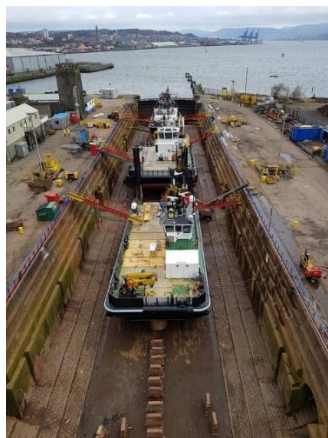


# BERTH DATA SHEET



## GARVEL DRY DOCK - GREENOCK



### PARTICULARS/BASIC INFORMATION

Admiralty Chart No.	1994	Survey Drawing No	HM-1031-1
Min. Depth Alongside	Refer Survey Drawing	Fendering	None
Quay Design	Dry dock	Avg Water Density	1018 kg/m <sup>3</sup>
Latitude	55°56.75'N	Longitude	004°43.90'W
Drydock length overall	193m	Eastings/Northings	391854, 6201405
Drydock width	21.3m	SWL Bollards	
No of berths	Dry Dock	Avg bollard spacing	20m
		Line of the berth	108°/288°
Air Draught restrictions	None	Quayside SWL	
ISPS Status	Compliant	Height of cope edge*	N/A

\*from Chart Datum

### QUAYSIDE FACILITIES – BY PRIOR ARRANGEMENT

Fresh Water	Yes	Shore Power	Yes
Port Waste	Yes	Cranes	90t Mobile crane

### TIDAL INFORMATION – BASED ON GREENOCK

HAT	<b>4.5m</b>	MHWS	<b>3.4m</b>
MHWN	<b>3.0m</b>	MLWN	<b>1.0m</b>
MLWS	<b>0.3m</b>	LAT	<b>-0.3m</b>
Comments			

### BERTH OPERATOR

NAME:	Dales Marine	CONTACT DETAILS:	01475 725372
-------	--------------	------------------	--------------

### COMMENTS:

Dolphins and pier on north side of approach to dock in poor condition and vessels should avoid using them to rest on.

V1 August 2020