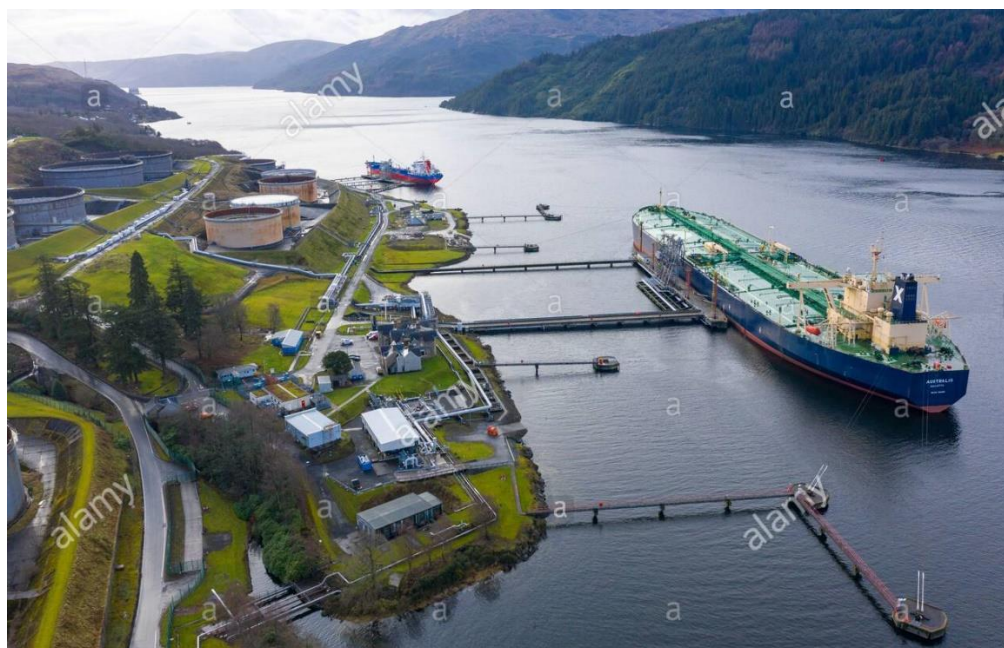


# BERTH DATA SHEET

## FINNART OCEAN TERMINAL – LOCH LONG



### PARTICULARS/BASIC INFORMATION

Admiralty Chart No.	3746 Plan B	Survey Drawing No	HM-
Min. Depth Alongside	Jetty 2 17.4m Jetty 3 24.7m	Fendering	Rubber tanker fendering
Quay Design	Piled jetty	Avg Water Density	1016 kg/m <sup>3</sup>
Latitude	56°07'N	Longitude	004°50'W
Quay length overall	Berth 2 (product) 100m Berth 3 (crude) 135m	Eastings/Northings	386011,6220578
No of berths	2	SWL Bollards	75T
Max vessel LOA	101,600 DWT Jetty 2 335,000 DWT Jetty 3	Avg bollard spacing	
Max vessel beam	N/A	Line of the berth	Berth 2 = 191° Berth 3 = 224°
Air Draught restrictions	76m Power cable in Loch Long	Quayside SWL	
ISPS Status	Compliant	Height of cope edge*	

\*from Chart Datum

### QUAYSIDE FACILITIES – BY PRIOR ARRANGEMENT

Fresh Water	No	Shore Power	No
Port Waste	On arrangement	Cranes	No

# BERTH DATA SHEET

## FINNART OCEAN TERMINAL – LOCH LONG



### TIDAL INFORMATION – BASED ON Greenock

HAT	4.5m	MHWS	3.4m
MHWN	3.0m	MLWN	1.0m
MLWS	0.3m	LAT	-0.3m
Comments			

### BERTH OPERATOR

Ineos	01436-810381
-------	--------------

### COMMENTS:

#### Mooring

Berth 2 = 2+2+2, Berth 3 = 3+2+2

Minimum visibility for berthing/sailing is 1nm

Refer Clydeport Towage Matrix for tug requirements.