



NOTICE TO MARINERS

No 71/20

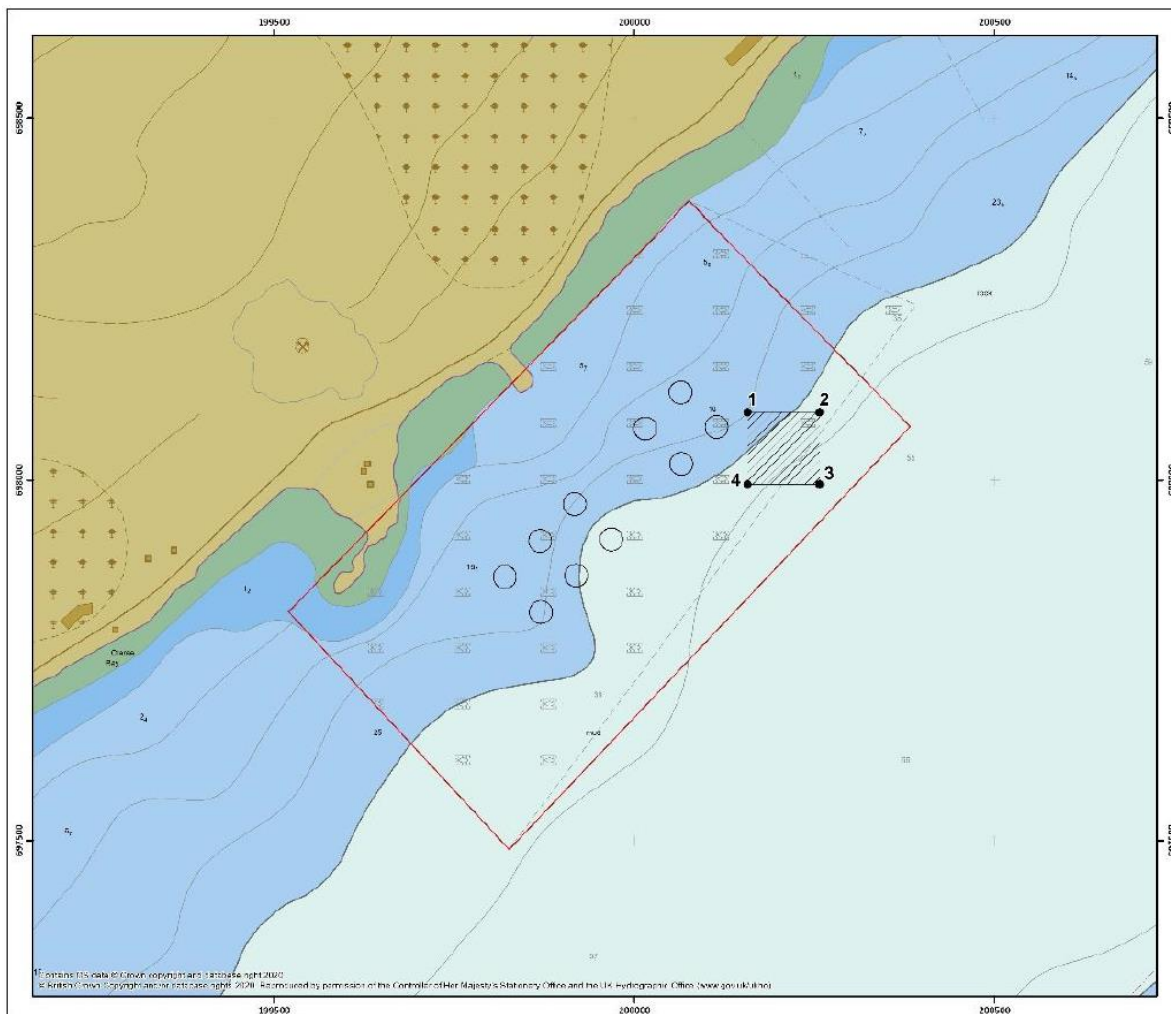
LOCH FYNE – QUARRY POINT

DEPLOYMENT OF HYDROGRAPHIC SURVEY EQUIPMENT

Chart 2382

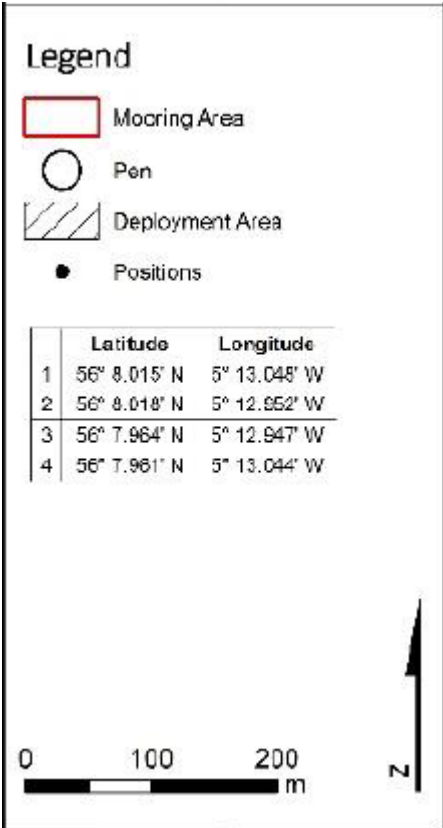
Mariners are advised that hydrographic survey equipment will be deployed in a position to the north of Flagstaff in Loch Fyne as indicated on the following chart extract. The equipment is expected to be installed within the Quarry Point finfish site mooring area on or around 26th August 2020 and will remain in position for approximately 6 months.

The deployment location will be marked by 1 yellow buoy, with the topmark “X” and Fl (5) Y 20s flash sequence.



Charlie Simcox, Senior Manager Marine Operations
Peel Ports Clydeport, Marine Department,
Greenock Ocean Terminal, Patrick Street, GREENOCK, PA16 8UU
Tel: 0151-949 6651
Email: clydemarinemanagers@peelports.com

NTM: 71/20
Page: 1 of 2
Valid from: 25th August 2020
Expiry Date: 31st December 2020



The vessel MV CLARE ANNE will install the equipment, maintaining a listening watch on VHF 12 and 16.



The vessel may be restricted in her ability to manoeuvre and will display the prescribed shapes and lights. Mariners should navigate with caution when transiting this area.

Estuary Radio may be contacted on VHF12 or ☎ 0151 949 6651.