

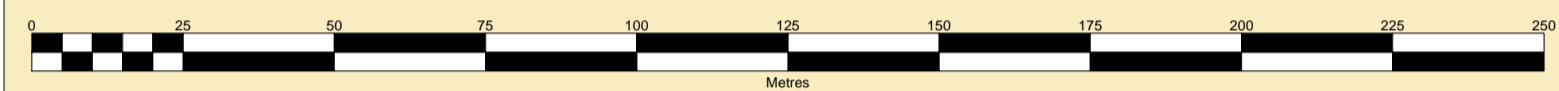
**PORT OF SHEERNESS LIMITED**  
 GARY DOYLE  
 Group Harbour Master

**River Medway**  
**1531-20-004**  
**GILLINGHAM REACH**  
**CHATHAM LOCK**  
**APPROACHES**

CHATHAM LOCKS - SCALE 1:500 at A1



SCALE 1:1250 at A1



**DEPTHS**  
 Depths are in metres and are reduced to chart datum being 2.80m below Ordnance Datum (Newlyn), which is approximately the level of the Lowest Astronomical Tide.

**HEIGHTS**  
 Heights are in metres. Underlined figures show heights above Chart Datum.

**DEPTH COLOUR TABLE**

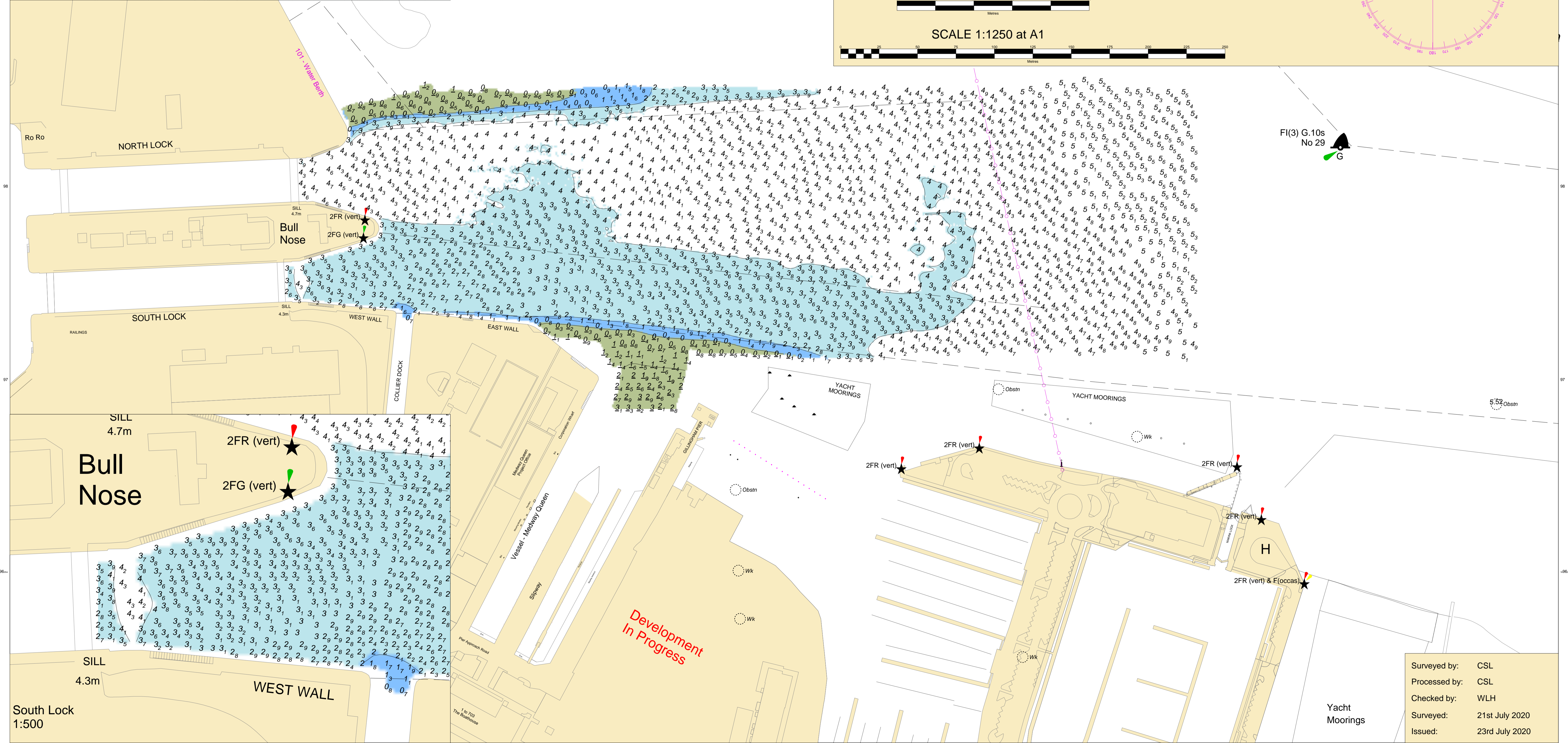
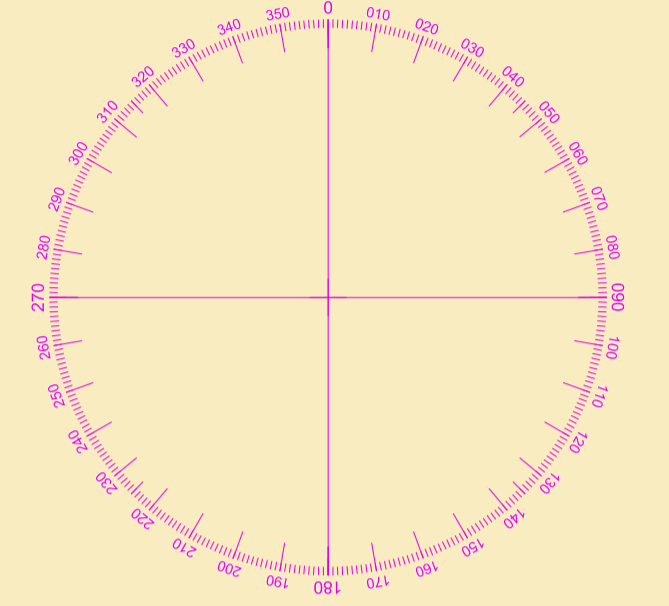
Light Blue	(-1.5m,0m)
Blue	(0m,2m)
Green	(2m,4m)
White	(≥4m)

**POSITIONS**  
 Positions are referred to OSGB36 National Grid Datum.

**AUTHORISED CHANNEL**  
 The pecked lines indicate the limits of the authorised channel and the approaches to Chatham Locks.

**NOTES**  
 While every care has been taken in the preparation of the information relating to the soundings shown on this chart, **PEEL PORTS MEDWAY** make no warranty as to the accuracy and will not accept any responsibility whatsoever arising from errors and omissions or for any consequence arising therefrom.

**TOPOGRAPHY**  
 The shore features on this chart are based largely on Ordnance Survey digital mapping data with permission of HMSO. © Crown Copyright 2020. Peel Licence Number 100018033.



Surveyed by:	CSL
Processed by:	CSL
Checked by:	WLH
Surveyed:	21st July 2020
Issued:	23rd July 2020