

# NOTICE TO MARINERS



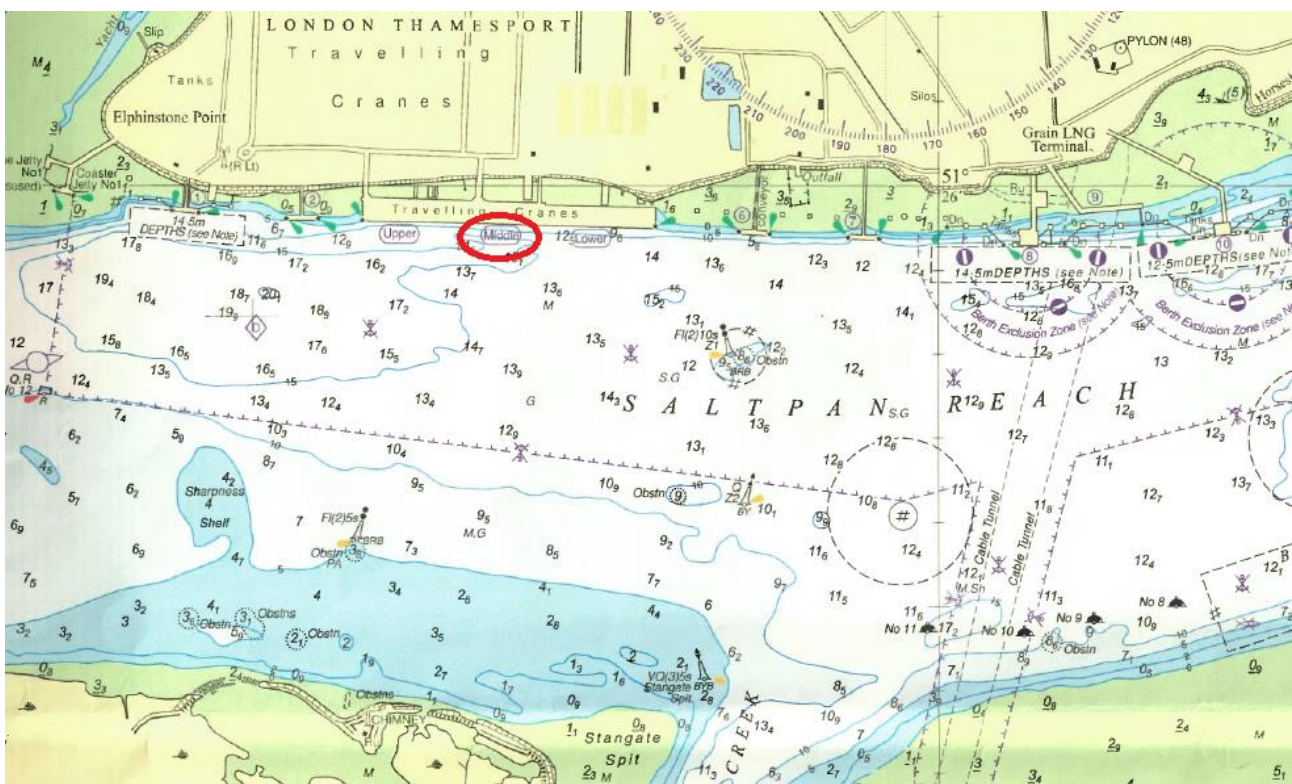
**NtoM 19 - 2025 (Updated 04.07.25)**

## River Medway – Saltpan Reach

### Thamesport - Diving Operations 2<sup>nd</sup> Phase.

**NOTICE IS HEREBY GIVEN** that the 2<sup>nd</sup> phase of diving operations are due to take place at Thamesport Terminal, Isle of Grain. Dive operations are required to carry out maintenance work on the power station intakes located under the quay. Work is due to recommence on or around 14<sup>th</sup> July 2025 with completion expected by 25<sup>th</sup> July 2025. Diving operations will be carried out between bollards 16 and 18 (see below), Thamesport have confirmed that vessel mooring plans will accommodate the work. All dive ops. will be carried from the support vessel KM Otter who will maintain a listening watch on VHF Channel 74 whilst on site.

**All vessels passing Thamesport should navigate with caution, reduce speed and wash and maintain a listening watch on VHF Channel 74 at all times, vessels manoeuvring onto and off of Thamesport should check the status of diving operations prior to arrival/departure.**



Issued on behalf of Port of Sheerness Ltd, the Statutory Harbour Authority for the River Medway and The Swale  
Telephone calls, VHF radio traffic, CCTV and radar traffic images may be recorded at  
the Peel Ports Group Port Control Centre, Liverpool.



**Marine Operations Department  
Peel Ports London Medway**

Notice Issued:  
Notice Expiry:

29<sup>th</sup> May 2025.  
25<sup>th</sup> July 2025.