

BERTH DATA SHEET



ANCHORAGES

PARTICULARS/BASIC INFORMATION

Anchorage	Latitude	Longitude	Charted Depths	Holding Ground	Remarks
A1	55°58.69'N	004°46.42'W	19-22m	SoM.fS	A1-B4 can be found on Admiralty Chart 1994
A2	55°58.69'N	004°45.84'W	22-24m	SoM	
A3	55°58.69'N	004°45.25'W	15-18m	fS.SoM.sh.St	Explosive Licenced
A4	55°58.36'N	004°46.42'W	22-60m	SoM.fS.	The 'Hole'
A5	55°58.37'N	004°46.84'W	21-70m	SoM	The 'Hole'
A6	55°58.37'N	004°45.31'W	12-18m	SoM	
A7	55°58.04'N	004°45.84'W	21-24m	SoM	Wk at 24m in vicinity
A8	55°58.04'N	004°45.27'W	21-24M	SoM	MoD mooring buoy located SE sector
B1	55°58.50'N	004°51.51'W	22-33m	S.M.	Vessels <120m bound for Glasgow may use B1/B2/B3 without Pilot at HM discretion.
B2	55°58.49'N	004°50.95'W	26-33m	M	
B3	55°58.48'N	004°50.36'W	32-38m	M	
B4	55°58.16'N	004°51.54'W	19-34m	SGR	<120m no pilot required.
FOC 1	55°45.10'N	004°59.83'W	57-89m	M	See chart BA1907
FOC 2	55°47.90'N	004°59.23'W	60-64m	M	
FOC 3	55°49.19'N	004°58.84'W	57-62m	M	
FOC 4	55°50.13'N	004°58.53'W	45-56m	M.fS.Sh	
FOC 5	55°50.95'N	004°57.83'W	27-36m	fS.Sh.S	Note wreck NW sector
FOC 6	55°49.50'N	004°55.94'W	27-39m	M.S.G	
FOC 7	55°51.34'N	005°01.91'W	42-48m	SoM	

ANCHORAGES

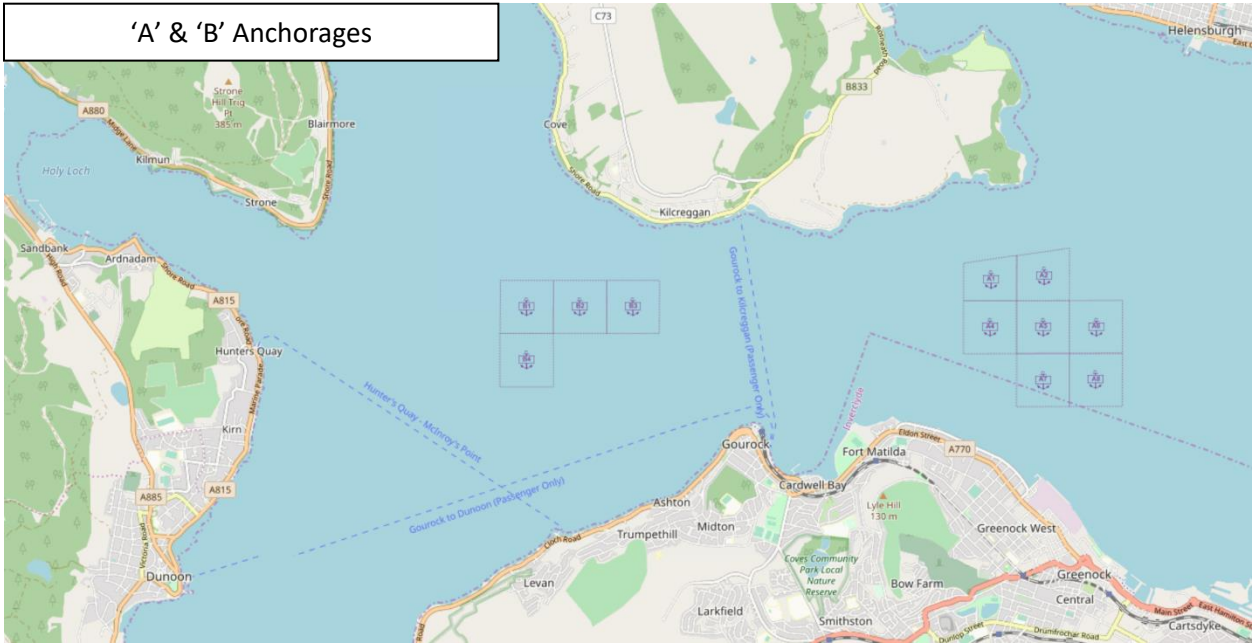


BERTH DATA SHEET

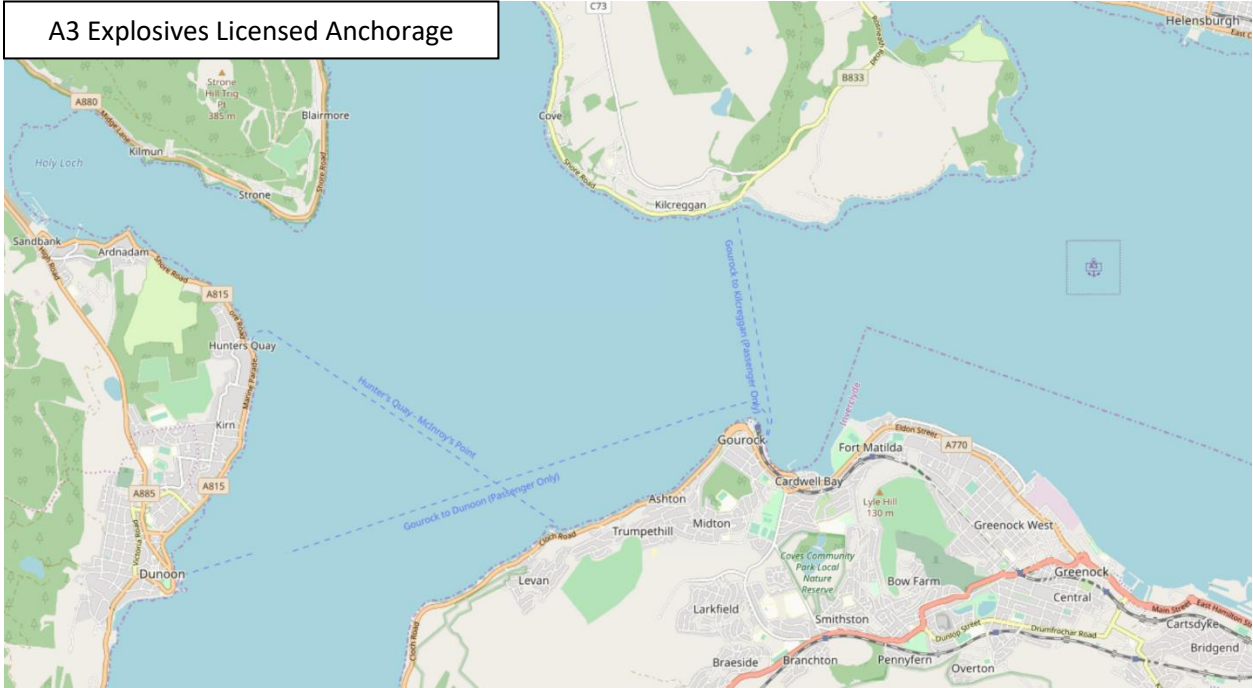


ANCHORAGES

'A' & 'B' Anchorages



A3 Explosives Licensed Anchorage



ANCHORAGE FACILITIES

NAME	Clydeport Estuary	CONTACT DETAILS	Estuary Radio VHF Ch.12 0151 949 6651 Clydemarinemangers@peelports.com
------	-------------------	-----------------	--

COMMENTS: