



NOTICE TO MARINERS

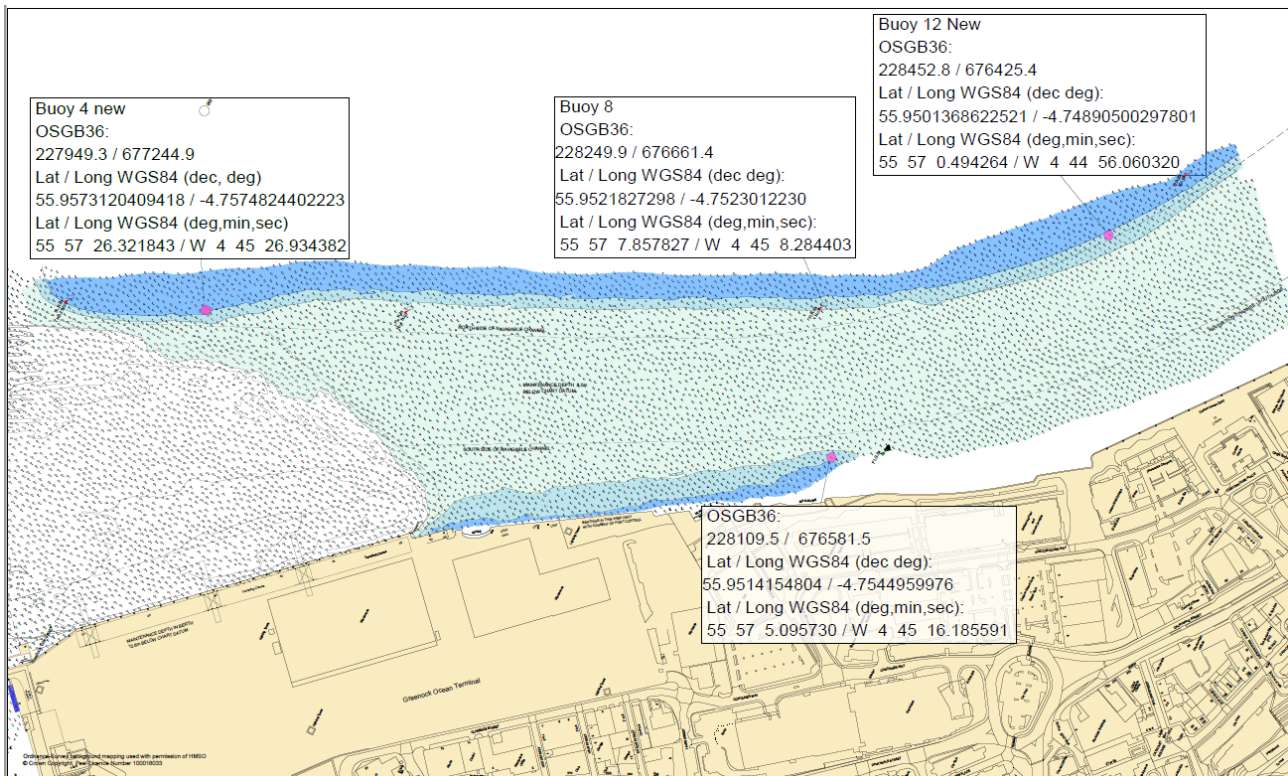
No 26/20

FIRTH OF CLYDE – GREENOCK OCEAN TERMINAL

RELOCATION OF LATERAL MARKS

Chart 1994

Mariners are advised that the following lateral marks remain in the positions indicated on the chart extract below. Works to establish the new cruise vessel berth are ongoing and on completion the final positions of the lateral marks will be published. An additional lateral mark is planned to be established on completion of the works and final navigational assessment.



Passing vessels are reminded to navigate this area with particular caution leaving a wide berth.

Estuary Radio may be contacted on VHF 12 or on ☎ 0151 949 6651.