



NOTICE TO MARINERS

No 24/20

RIVER CLYDE

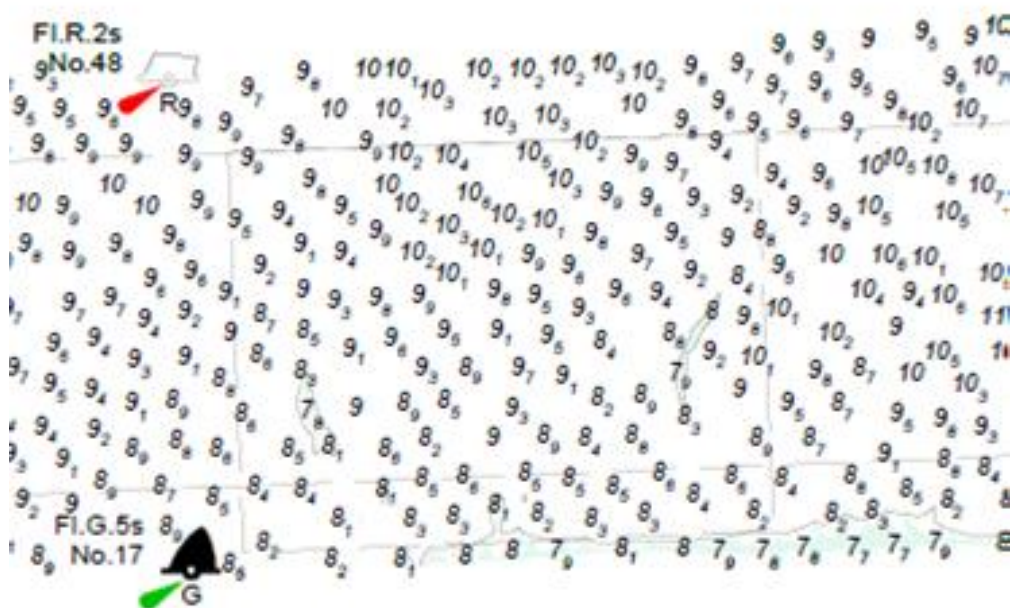
REDUCED DEPTHS – CARDROSS AREA

Mariners are advised that vessels with a draft >6m require to consult with the Harbour Master prior to transiting the following areas.

Chart 2007, Plan A

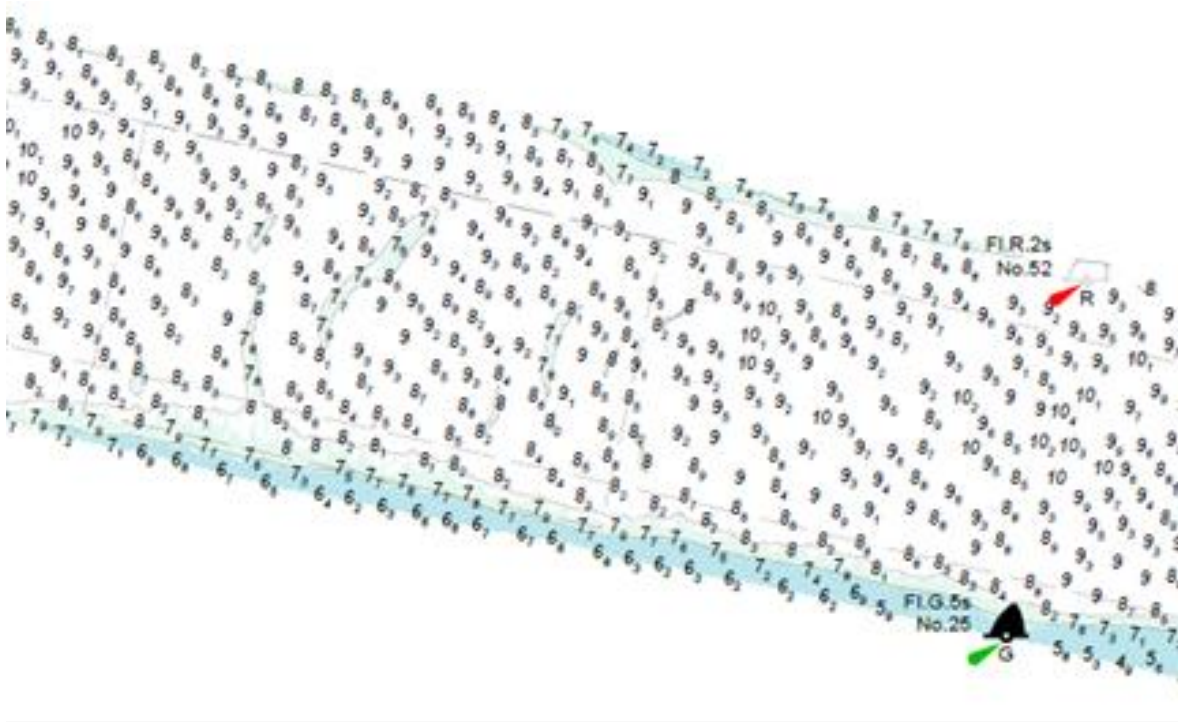
River Channel Vicinity of No.48 and No.17 Buoys

Depths in the river channel in this area are reduced to 7m in some places.



River Channel Vicinity of No.52 and No.25 Buoys

Depths in the river channel in this area are reduced to 7m in some places.



Contractors are being engaged to conduct bed levelling works and a further NTM will be issued in advance.

For further information contact Estuary Radio ☎0151-949 6651 or VHF 12.