



**MERSEY DOCKS AND HARBOUR COMPANY LTD**

Gary Doyle  
Group Harbour Master

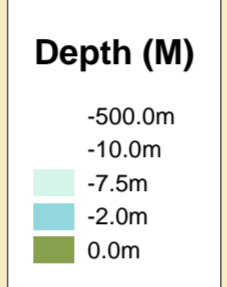
River Mersey  
LPR001\_9\_2021\_001  
Seacombe Stage

**DEPTHS**  
Depths are in metres and are reduced to chart datum being 4.93m below Ordnance Datum (Newlyn), which is approximately the level of Lowest Astronomical Tide.

**HEIGHTS**  
Heights are in metres. Underlined figures show heights above Chart Datum.

**POSITIONS**  
Positions are referred to OSGB36 National Grid Datum.

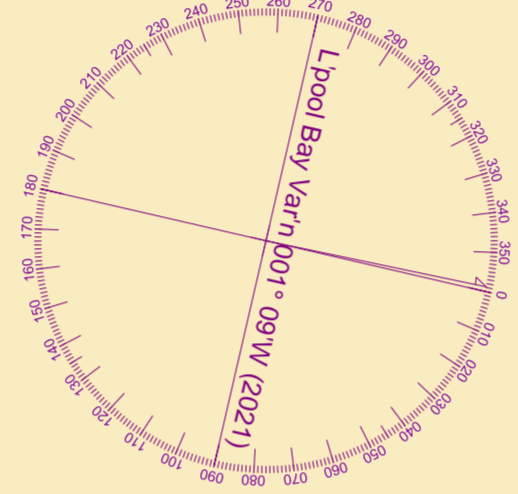
Surveyed by: CMcF  
Processed by: CMcF  
Checked by: CMcF  
Surveyed: 29th April 2021  
Issued: 30th April 2021



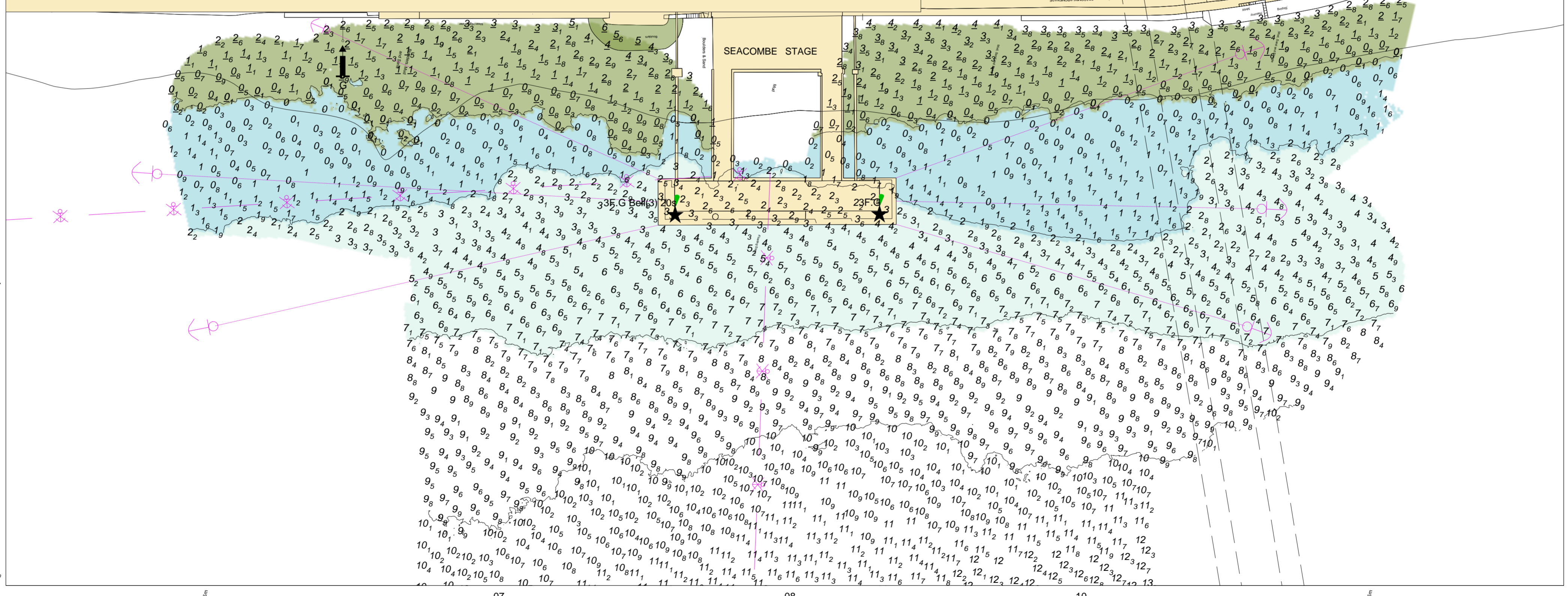
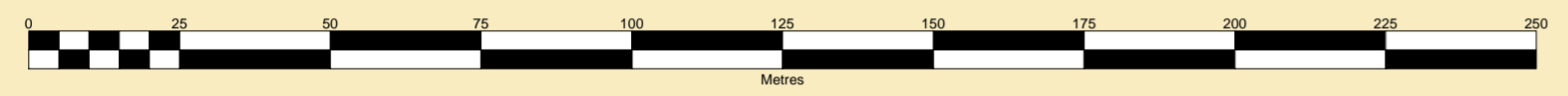
**UKHO & NTMS**  
When using this chart please refer to UKHO Admiralty Publications and also local Notice to Mariners and Navigational Warnings.

**TOPOGRAPHY**  
The shore features on this chart are based largely on Ordnance Survey digital mapping data with permission of HMSO. © Crown Copyright 2021. Peel Licence Number 100018033.

**FLATS & SANDBANKS**  
**CAUTION OWING TO FREQUENT CHANGES IN DEPTHS AND POSITIONS OF FLATS AND SANDBANKS THIS CHART SHOULD BE USED WITH CAUTION.**



SCALE 1:1250 at A2



3005.00m 06 07 08 3010.00m 3025.00m 3023.75m 26 25 27 26 3028.00m 3011.00m